



256 Balfour Road, Ilford

Ilford

Offers Over £600,000



256 Balfour Road

Ilford, Ilford


Council Tax band: C

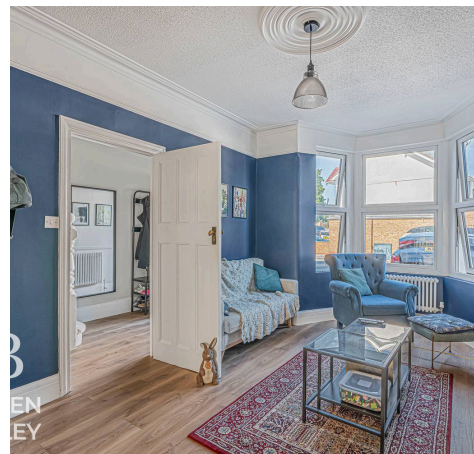
Tenure: Freehold

EPC Energy Efficiency Rating: D

EPC Environmental Impact Rating: D

- 4 Bedroom Mid Terrace Home
- Victorian Home
- Fully Refurbished With Original Charm
- Off Street Parking
- Approved Planning Permission For 6 Meter Rear Extension
- Boasting Large Loft Conversion
- Sought After "Commonwealth Estate"
- In The Catchment Area For Seven Kings School
- Great Transport Links


BOWDEN
BRADLEY





Living Room

15' 2" x 10' 8" (4.63m x 3.25m)

Dining Room

15' 0" x 10' 6" (4.56m x 3.20m)

Kitchen

9' 10" x 8' 3" (2.99m x 2.51m)

Conservatory

8' 6" x 17' 0" (2.59m x 5.18m)

Bedroom

15' 1" x 10' 8" (4.60m x 3.25m)

Bedroom

12' 2" x 8' 6" (3.71m x 2.59m)

Bedroom

11' 5" x 8' 3" (3.48m x 2.51m)

Bathroom

9' 5" x 6' 0" (2.87m x 1.83m)

Bedroom

18' 5" x 15' 9" (5.61m x 4.80m)

Shower Room

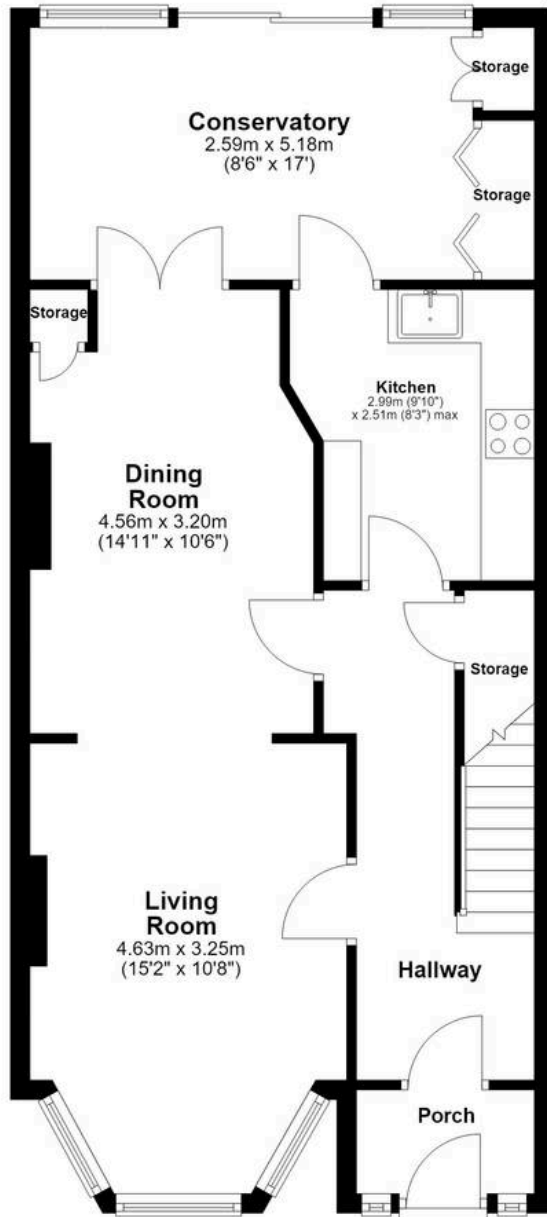
5' 2" x 4' 1" (1.57m x 1.24m)





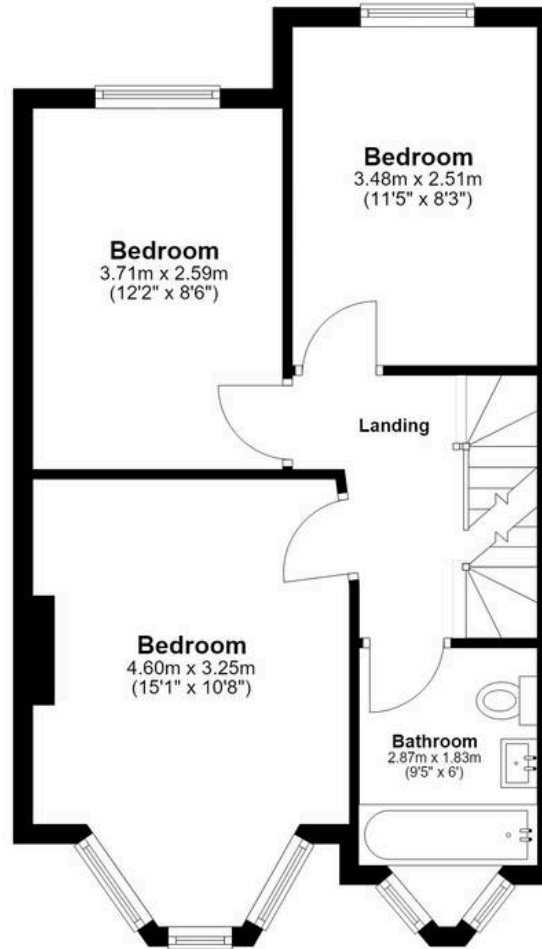
Ground Floor

Approx. 60.5 sq. metres (651.4 sq. feet)



First Floor

Approx. 43.1 sq. metres (463.8 sq. feet)



Second Floor

Approx. 22.8 sq. metres (245.2 sq. feet)



Total area: approx. 126.4 sq. metres (1360.4 sq. feet)



Bowden Bradley

Bansal House, Bracken Industrial Estate, 185 Forest Road - IG6 3HX

02080593593 · info@bowdenbradley.co.uk · bowdenbradley.co.uk/