



PENDENNIS ROAD, SW16

£850,000

- Three bedrooms
- Approved planning permission
- Large south facing garden
- Off street parking
- Excellent condition
- Energy Rating: C

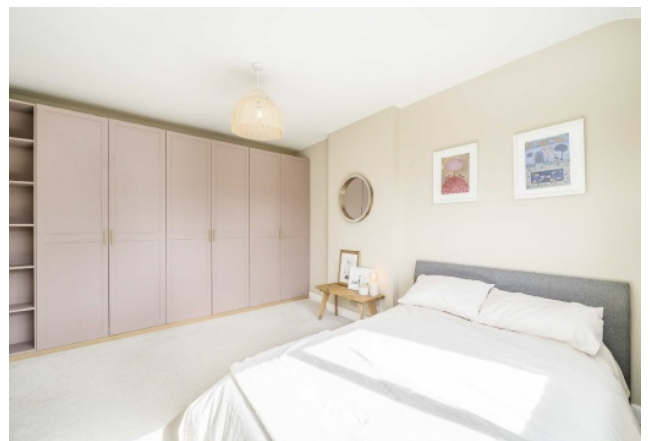




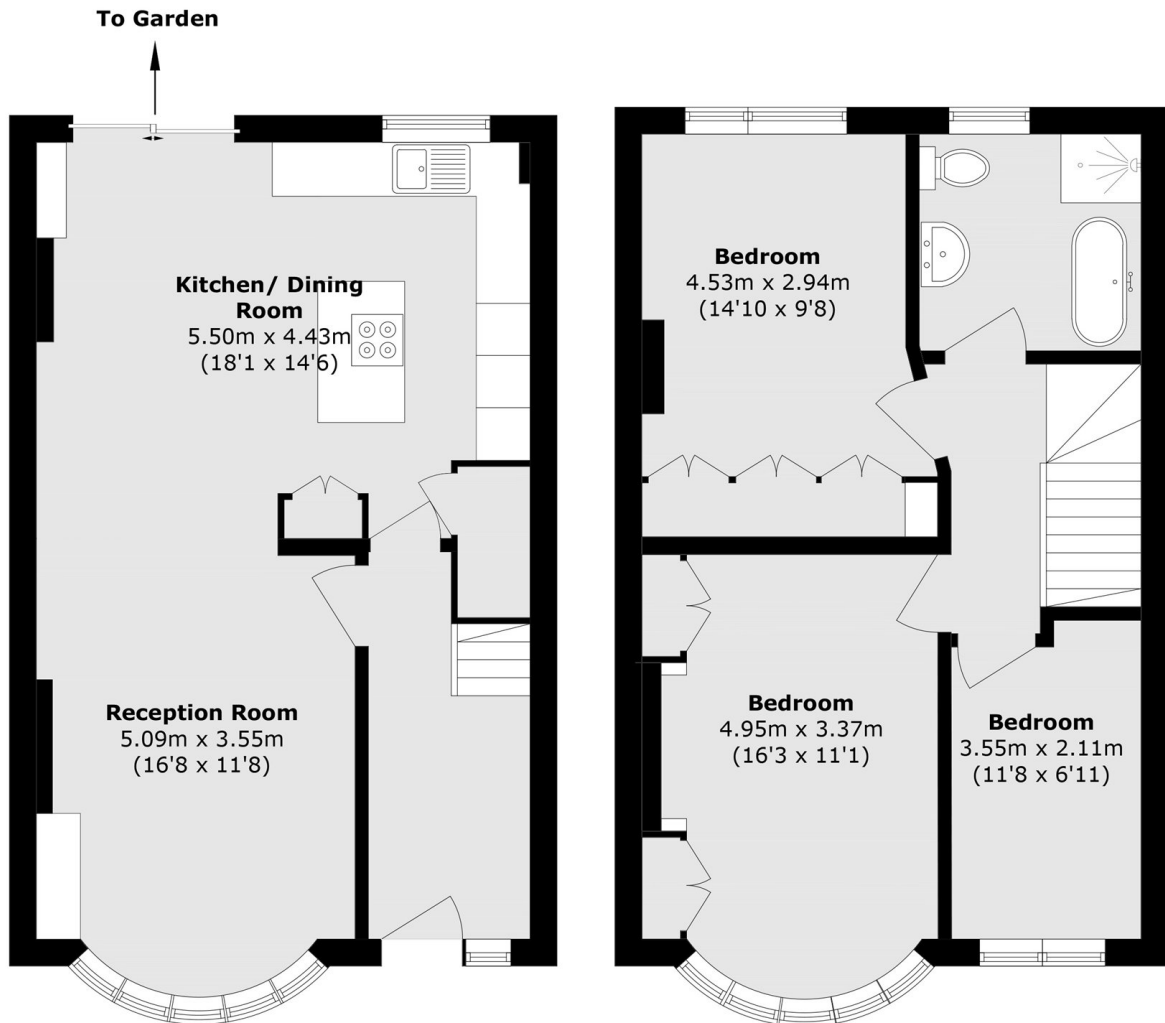
ABOUT THE HOME

A high specification home, located on a desirable road in the heart of Streatham. The property blends its original charm with an immaculate modern finish. Further benefits include a large 25m south facing garden and a driveway.

Pendennis Road is conveniently placed within close proximity to the bars, restaurants and amenities of Streatham High Road and Tooting Bec Common. Commuters have easy access to a number of links including Streatham Hill mainline station providing rail links to Clapham Junction via London Victoria, the Thameslink at Streatham Station and numerous bus routes to the City.






Ground Floor
First Floor

Total area (approx.): 101.0 sq. m (1087.1 sq. ft)

JACKSONS STREATHAM

1-3 De Montfort Parade,
Streatham High Road,
Sales: 020 8487 3179
Lettings: 020 8487 3180

Energy Rating: C We aim to make our particulars both accurate and reliable. However they are not guaranteed; nor do they form part of an offer or contract. If you require clarification on any points then please contact us, especially if you're traveling some distance to view. Please note that appliances and heating systems have not been tested and therefore no warranties can be given as to their good working order.