



FOR YOUR NEXT MOVE...

Apt 21, Trafford Apartments, Richmond Way, Rotherham

£89,995

## Apartment 21

Trafford Apartments Richmond Way,  
Rotherham

- Modern & Spacious Apartment - Open Plan Living
- Generous Bedroom with Storage
- Kitchen with Integral Cooking Appliances
- Three Piece Suite Bathroom with Shower Over Bath
- Entrance Hall with Double Storage Cupboard
- Secure Telecom Entry System
- Allocated Parking Space
- Walking Distance to Meadowhall & Train/ Bus Station
- Excellent Motor Links for the M1 & Sheffield
- Council Tax Band A / Leasehold



# Apartment 21

Trafford Apartments Richmond Way,  
Rotherham

Presenting an exceptional opportunity for first-time buyers, professionals, or investors, this modern and spacious one-bedroom apartment offers contemporary living in a highly convenient location. Situated within walking distance of Meadowhall shopping centre and the train and bus station, the apartment is perfectly placed for easy access to local amenities and excellent transport links, including the M1 and routes into Sheffield.

The property welcomes you with a generous entrance hall, featuring a double storage cupboard that provides ample space for coats, shoes, and household essentials. The open plan living area is bright and inviting, offering plenty of room for both relaxation and dining, seamlessly incorporating a stylish kitchen complete with integral cooking appliances for effortless meal preparation and entertaining.

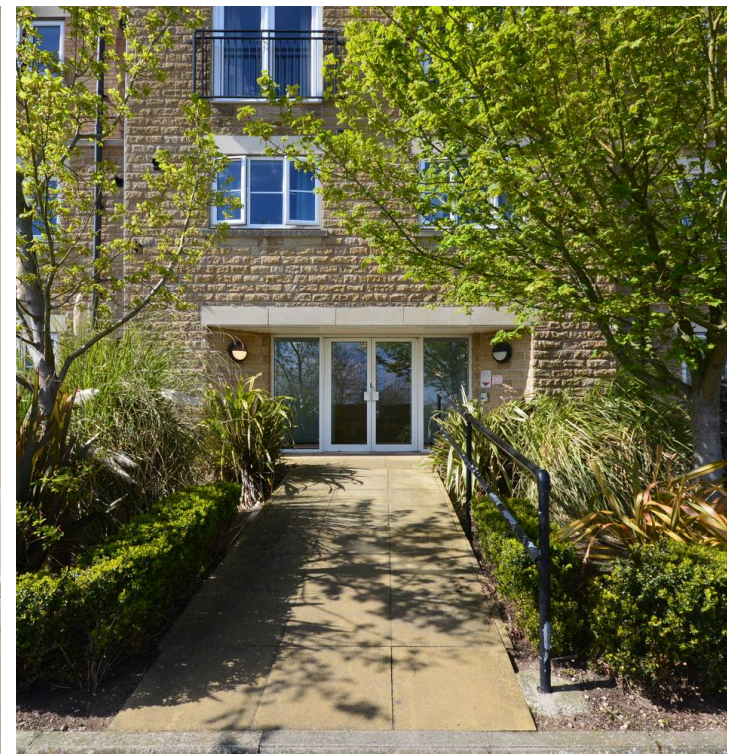
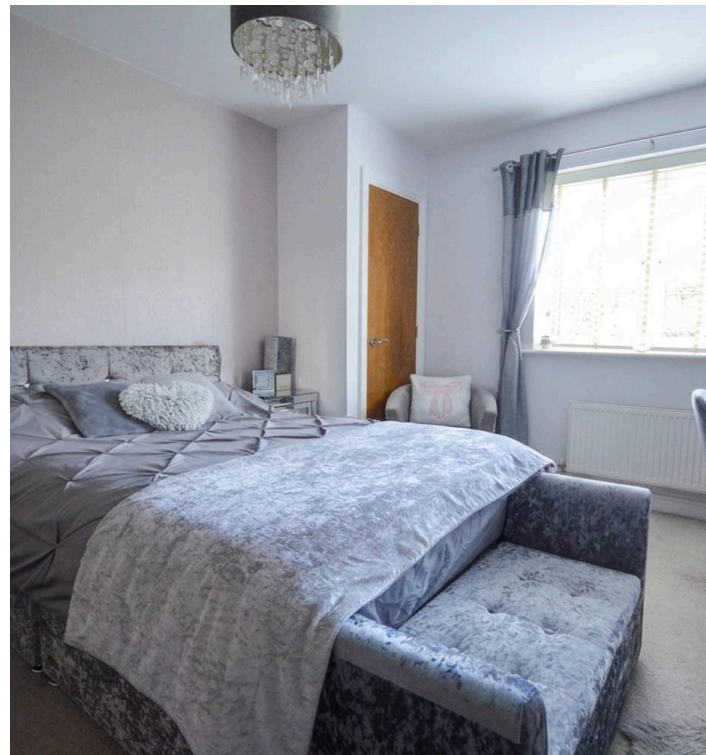
The generous bedroom is well-proportioned and benefits from built-in storage. A modern three-piece suite bathroom includes a shower over the bath, combining practicality with comfort for your daily routine.



## Apartment 21

Trafford Apartments Richmond Way,  
Rotherham

For added peace of mind, the flat is accessed via a secure telecom entry system and is offered with an allocated parking space, plus visitor spaces, providing convenience for residents and visitors alike.





GROUND FLOOR  
558 sq.ft. (51.8 sq.m.) approx.



TOTAL FLOOR AREA : 558 sq.ft. (51.8 sq.m.) approx.

Whilst every attempt has been made to ensure the accuracy of the floorplan contained here, measurements of doors, windows, rooms and any other items are approximate and no responsibility is taken for any error, omission or mis-statement. This plan is for illustrative purposes only and should be used as such by any prospective purchaser. The services, systems and appliances shown have not been tested and no guarantee as to their operability or efficiency can be given.  
Made with letroplan ©2025



## Bartons

Bartons Estate Agency, 51-53 Moorgate Street – S60 2EY

01709 515740 • [info@bartons-net.co.uk](mailto:info@bartons-net.co.uk) • [www.bartons-net.co.uk/](http://www.bartons-net.co.uk/)