



Dudley Court

Upper Berkeley Street, W1H

£2,000 per month
(£461.54 per week)

A conveniently located one bedroom apartment in this portered block moments away from Hyde Park and Marble Arch. The apartment comprises a double bedroom, reception room, and separate kitchen and bathroom.

CHESTERTONS



Dudley Court

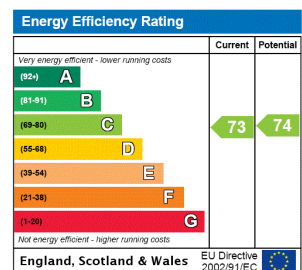
Upper Berkeley Street, W1H

- One bedroom
- First floor
- Lift Access
- Porter



A conveniently located one bedroom apartment in this portered block moments away from Hyde Park and Marble Arch. The apartment comprises a double bedroom, reception room, and separate kitchen and bathroom.

Minimum Term: 12 months
Deposit Required: £0.00
Local Authority: Westminster
Council Tax Band: D
EPC Rating: C
Furnished



Chestertons Hyde Park & Marylebone Lettings

40 Connaught Street
 Hyde Park & Marylebone
 London
 W2 2AB
 hydeparklettingsusers@chestertons.co.uk
 02072985950
 chestertons.co.uk

Additional tenant charges apply (fees apply to non-AST tenancies only)
 Tenancy Agreement Fee: £300
 References per Tenant/Guarantor: £60
 Inventory check (approx. £100 – £250 inc. VAT)
 chestertons.co.uk/property-to-rent/applicable-fees

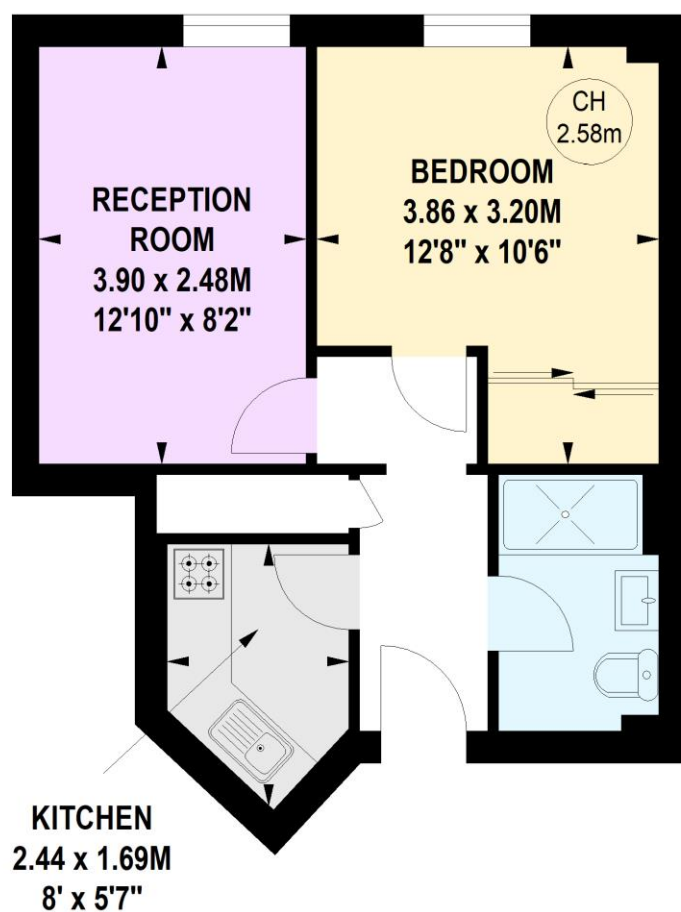
Dudley Court, Upper Berkeley Street, W1H

Approximate gross internal area

Key :

CH - Ceiling Height

34.65 sq m / 373 sq ft



First Floor

**Not to scale, for guidance only and must not be relied upon as a statement of fact.
All measurements and areas are approximate only**

