



***1 Homestead Court, Middlewich Road, Rudheath, Northwich,
Cheshire CW9 7US***

£82,500

No Onward Chain...This one bedroom ground floor apartment situated in the popular residential area of Rudheath and allows easy access to the local shops and other amenities close to hand. Warmed by electric storage heaters which are complemented with uPVC double glazed windows the property briefly comprises entrance hall, lounge/diner, kitchen, one bedroom and a family bathroom. This property has the added benefit of an intercom entry system and an allocated parking.

Rudheath is a popular area on the outskirts of Northwich with local shops and schools. The area is also convenient for ease of access to the A556 Northwich bypass making destinations such as Manchester, Chester and Manchester International Airport all easily accessible on a daily travelling basis. Northwich town centre is a short drive away and provides a wide range of shopping, leisure and recreational pursuits to include Boots, WH Smith and Waitrose.

For an internal viewing please contact Coulby Conduct Northwich Office on 01606 352220.

Accommodation.

Entrance Hall

Lounge/Diner 14'04" x 10'00"

Kitchen 9'11" x 6'03"

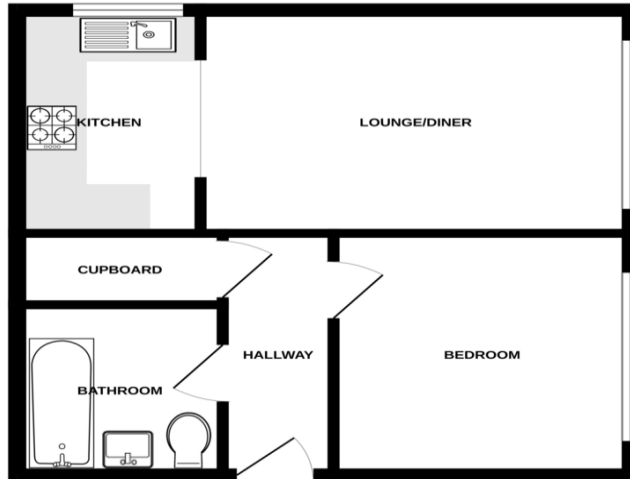
Bedroom 11'01 x 9'03"

Bathroom 6'04" x 6'00"

Service Charge 2025 £1320



GROUND FLOOR



Whilst every attempt has been made to ensure the accuracy of the description contained here, measurements of doors, windows, rooms and any other items are approximate and no responsibility is taken for any error, omission or mis-statement. This plan is for illustrative purposes only and should be used as such by any prospective purchaser. The vendor, agents and applicants errors here are even listed and no guarantee as to their operability or efficiency can be given.
Made with Metropac ©2002

Please note that we have not tested any apparatus, equipment, fixtures, fittings or services, and so cannot verify they are in working order or fit for their purpose.

Whilst these particulars have been prepared in good faith and are believed to be correct, they are intended for the general guidance only of prospective Purchasers and should not be founded on under any circumstances. All measurements are approximate and the property is sold in its present state of repair.

Furthermore solicitors should confirm moveable items described in the sales particulars are, in fact, included in the sale since circumstances do change during marketing or negotiations. A final inspection prior to exchange of contracts is also recommended.

YOUR HOME IS AT RISK IF YOU DO NOT KEEP UP REPAYMENTS ON A MORTGAGE OR OTHER LOAN SECURED ON IT

Coulby Conduct Estate Agents make introductions for Financial Services business to Coulby Conduct financial services, regulated by the Financial Services Authority.