



BARRY COURT

BARRY BC COURT

Jordan fishwick

WITHINGTON
Barry Court



Barry Court, Withington, M20 3LQ

£150,000



The Property

A first floor one bedroom apartment set within in a purpose built development, in need of updating and improvement, the property is ideally situated with easy access to the villages of both West Didsbury and Withington and adjacent to Christie Hospital. Suitable for a number of buyers including the first time buyer or buy to let landlord. Comprising: Large hallway with ample storage space, spacious living/dining area, fitted kitchen with appliances, double bedroom and bathroom with separate corner shower cubical. Features include electric heating and double glazing. Outside, well maintained communal gardens and residents parking. Offered for sale in no chain.

Directions

M20 3LQ



Map data ©2026 Google

- One bedroom first floor apartment
- Close to Withington & West Didsbury
- Private residents parking & garage
- Spacious lounge/dining room
- Separate kitchen
- Popular development
- No chain

Postcode - M20 3LQ

EPC Rating - D

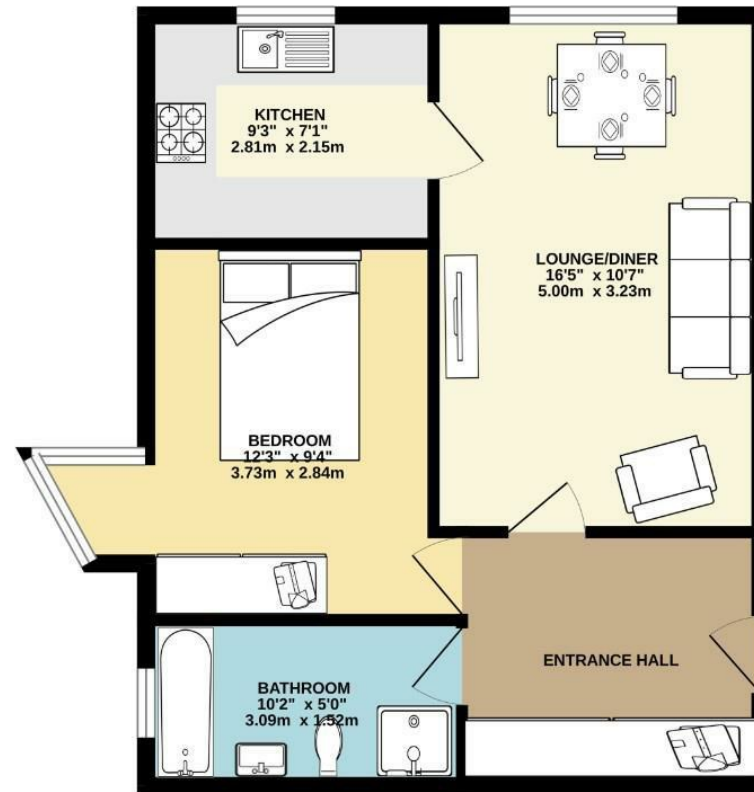
Floor Area - 508.00 sq ft

Local Authority - Manchester City Council

Council Tax - A



FIRST FLOOR
508 sq.ft. (47.2 sq.m.) approx.



TOTAL FLOOR AREA: 508 sq.ft. (47.2 sq.m.) approx.
Measurements are approximate. Not to scale. Illustrative purposes only.
Made with Metrojix ©2026



These particulars are believed to be accurate but they are not guaranteed and do not form a contract. Neither Jordan Fishwick nor the vendor or lessor accept any responsibility in respect of these particulars, which are not intended to be statements or representations of fact and any intending purchaser or lessee must satisfy himself by inspection or otherwise as to the correctness of each of the statements contained in these particulars. Any floorplans on this brochure are for illustrative purposes only and are not necessarily to scale.

Offices also at: Wilmslow, Macclesfield, Hale, Sale, Chorlton, Glossop, Manchester & Salford

757-759 Wilmslow Road, Didsbury Village, Manchester

0161 445 4480

didsbury@jordanfishwick.co.uk
www.jordanfishwick.co.uk