



FOSTER  
& CO.

# St. Margarets Place

Brighton, BN1 2FQ

Asking price £300,000

A spacious two bedroom first floor flat offering approximately 921 sq ft of well arranged accommodation, positioned moments from Hove seafront and enjoying sea views from the rear.

The property has a generous living and dining room, providing an excellent entertaining space with direct access onto a superb balcony measuring approximately 23ft in length. The balcony is a real feature of the flat, offering plenty of space for seating and a lovely outlook across the surrounding rooftops towards the sea.

There is a separate kitchen, fitted with a range of units and worktop space, also enjoying an outlook towards the sea. Both bedrooms are well proportioned, with the larger bedroom measuring over 20ft in length, making it an impressive principal bedroom. The second bedroom is also a comfortable double, ideal for guests, a home office or additional living space.

The accommodation is completed by a bathroom, good hallway storage and a practical layout throughout. The flat offers excellent space, natural light and fantastic potential for a buyer to enhance and personalise over time.

Located in St Margaret's Place, the property is ideally placed for Hove seafront, Brighton city centre, local cafés, restaurants, shops and transport links. With its impressive floor area, separate kitchen, generous balcony and sea views, this is a superb opportunity in a highly convenient coastal location.

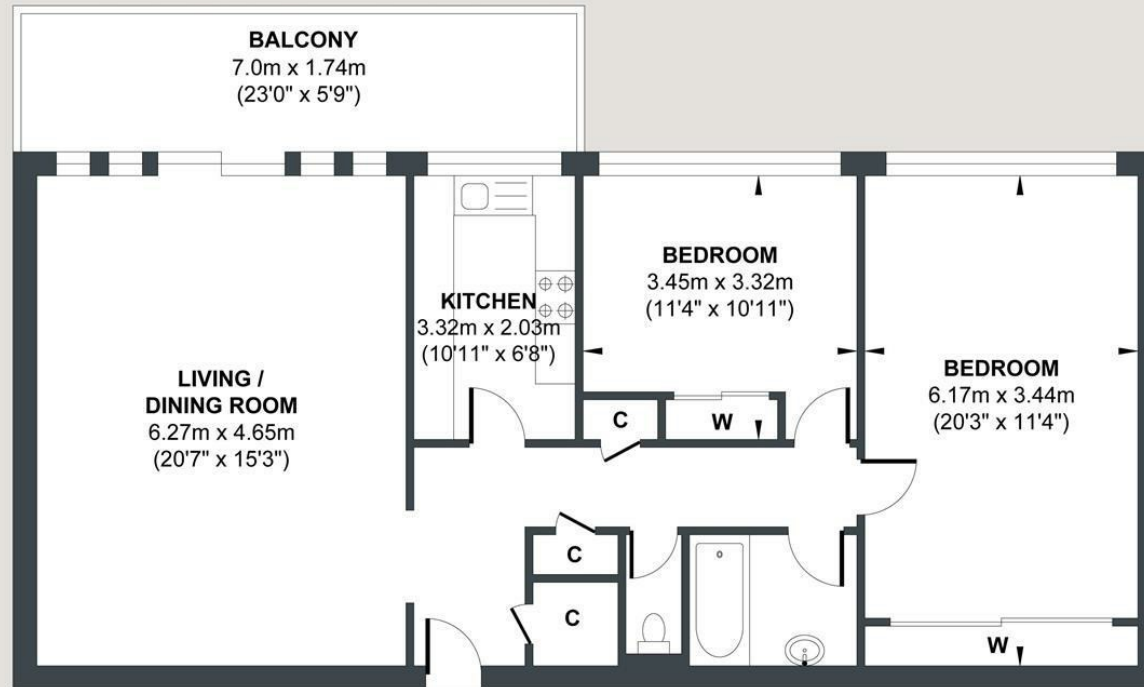


- Two bedroom first floor flat in St Margaret's Place
- Spacious living and dining room measuring over 20ft
- Impressive balcony measuring approximately 23ft in length
- Separate fitted kitchen with good worktop and storage space
- Second double bedroom, ideal as a guest room or home office
- Approximately 921 sq ft of well arranged accommodation
- Direct access from the living room onto a large balcony
- Sea views across the surrounding rooftops
- Large principal bedroom measuring over 20ft in length
- Excellent location close to Hove seafront

Energy Efficiency Rating		
	Current	Potential
Very energy efficient - lower running costs		
(92 plus) A		
(81-91) B		
(69-80) C		
(55-68) D		
(39-54) E		
(21-38) F		
(1-20) G		
Not energy efficient - higher running costs		
	75	80
England & Wales		
EU Directive 2002/91/EC		

# ST MARGARET'S PLACE

Approx. Gross Internal Floor Area = 85.58 sq m / 921.17 sq ft



FIRST FLOOR

## Approximate Floor Area

921.17 sq ft  
(85.58 sq m)



Foster & Co and their clients give notice that:

These sales particulars do not constitute any part of an offer of contract and are for guidance for prospective purchases only and should be not relied upon as a statement of fact.

We are not to be held responsible for material information that has not been given to us by our client at the time of marketing.

All measurements are approximate



