



Maindoor Flat

55 Morris Crescent, Kilmarnock, KA1 5BJ



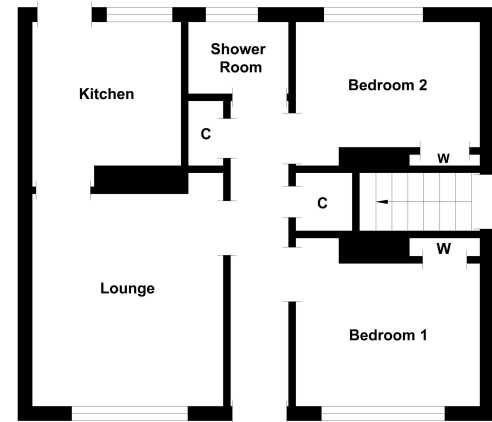
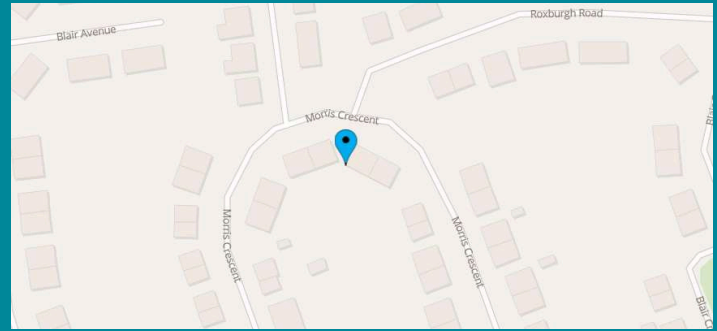
taylorandhenderson.co.uk

1		2		1		D	EPC rating
---	--	---	--	---	--	---	----------------------

55 Morris Crescent

Taylor and Henderson are delighted to bring to the market this rarely available ground floor main door flat located within easy walking distance to all local amenities and public transport stations. The accommodation comprises entrance hallway, lounge, kitchen with door to the rear garden, 2 double bedrooms both with wardrobe storage and a wet room. The property benefits from double glazing & gas central heating. The front garden is mainly laid with chips for low easy maintenance with a paved driveway to the side providing off street parking. The enclosed rear garden has a decked patio and ramp leading to the paved section to the rear. Kilmarnock offers a wide range of amenities including excellent supermarket and retail shopping, transport and recreational facilities. The recently upgraded M77 links to most major commercial centres within the west central belt of Scotland.

Hall / Landing	
Lounge	14'3 x 12'7
Kitchen	10'8 x 10'0 (at widest points)
Bedroom 1	11'6 x 13'4 (at widest points)
Bedroom 2	9'5 x 13'4
Wet Room	5'8 x 5'8



Floor Plan

Illustration for identification purposes only, measurements are approximate, not to scale.
Produced by Elements Property

Viewing
Through solicitors on 01294 606700

Email
property@taylorandhenderson.co.uk

Reference E508021