

Property ref: 3602

## Tean House, Reading, RG2 0GU

£1,400 PCM

**HASLAM'S**  
Lettings



A newly redecorated second floor two bedroom apartment located on the Kennet Island Development with convenient access to the M4 and Green Park Business Campus.

Reading Borough Council tax band C.

Broadband/Mobile Info: Connections available. For an indication of specific speeds and supply of Broadband and Mobile, we advise applicants go to the Ofcom website Broadband and Mobile Coverage Checker.

**Available 10/08/2026**

- Two bedrooms
- Family bathroom; Gas central heating
- Lounge/Diner; EPC rating B
- Kitchen with integrated appliances
- Allocated parking
- Furnished; Managed by LANDLORD

\*Fees For Assured Periodic Tenancies: when you rent a property from us you will be required to pay a sum equivalent to one weeks' rent for a holding deposit. Upon successful application, this amount will be off set against your first months' rent. You will also be required to pay a security deposit equivalent to 5 weeks' rent which will be held and protected in line with Deposit legislation. For more information about our fees please visit: [www.haslams.net](http://www.haslams.net)  
Fees for all other tenancies (Non Housing Act Tenancies / Company Lets): when you rent a property from us we will charge you a one-off fee per property. This charge is the equivalent of 15 days of the monthly rental charge (+VAT) with a minimum fee of £450 (inc.VAT) up to a maximum of £650 (inc.VAT). Other fees may apply depending on your circumstances.

**0118 960 1055**

**[lettings@haslams.net](mailto:lettings@haslams.net) [www.haslams.net](http://www.haslams.net)**

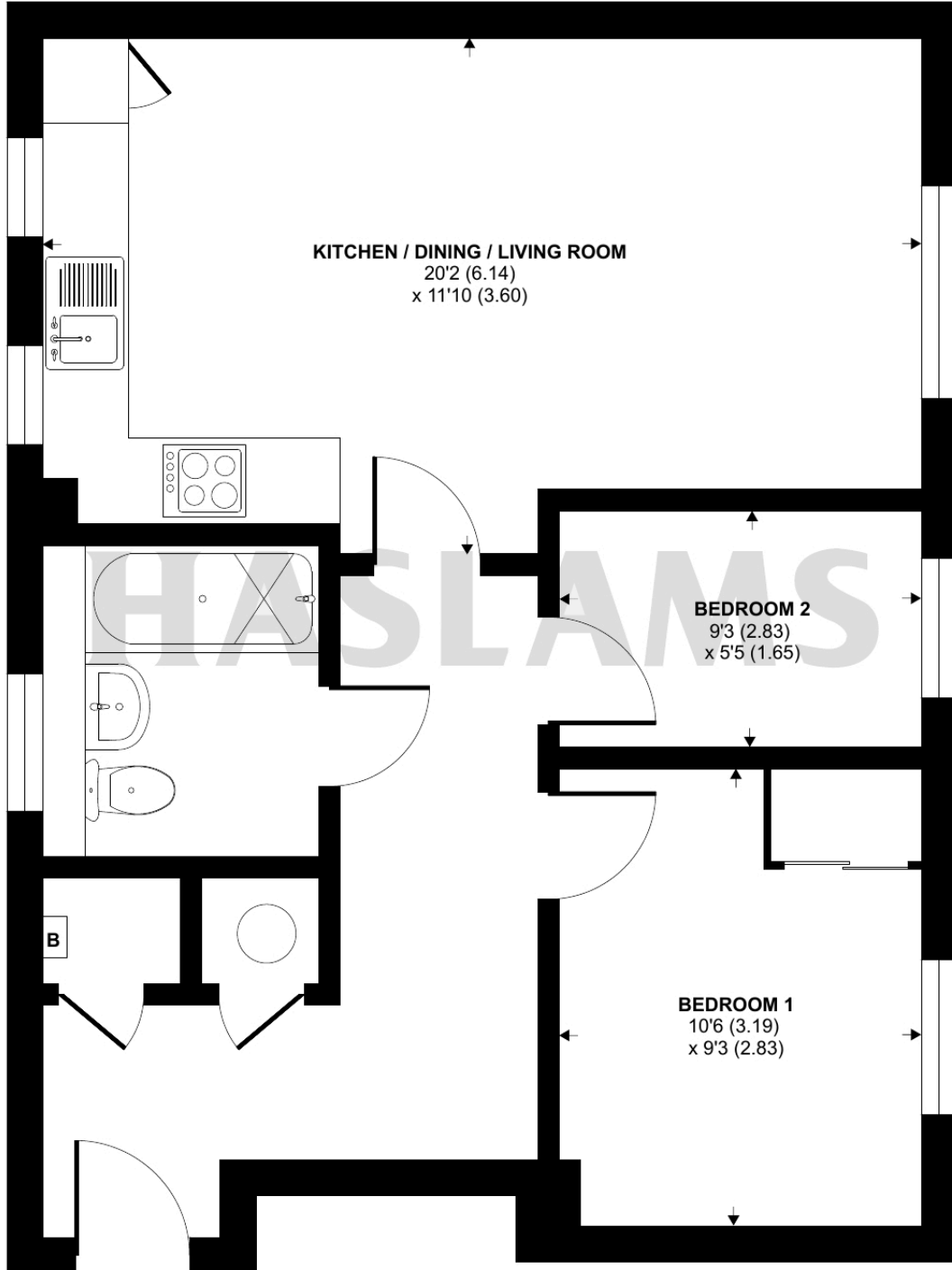
**Haslams Estate Agents Ltd, 159 Friar Street, Reading, Berkshire, RG1 1HE**



# Tean House, Reading, RG2

Approximate Area = 537 sq ft / 49.8 sq m

For identification only - Not to scale



## SECOND FLOOR

 Floor plan produced in accordance with RICS Property Measurement 2nd Edition, Incorporating International Property Measurement Standards (IPMS2 Residential). © nchecon 2025. Produced for Haslamss. REF: 1369390