



ORLANDO REID

ORLANDO REID

Battersea Park Road, London, Battersea, SW11

£2,250



ORLANDO REID

SUMMARY

A newly built top-floor, 1-bedroom apartment in a fantastic location that has been finished to a very high standard throughout.

Ideally located on Battersea Park Road, moments from Clapham Junction and its excellent transport links. Battersea Square, a stones throw away, offers an array of boutique shops, restaurants and bars. The immediate area offers an amazing community, making this area the first choice of many professionals seeking a home in a mature and established position, and families. The Battersea Riverside has splendid walkways and a variety of restaurants, coffee shops along the river, which is all moments away. Regarding green open spaces and playgrounds and sporting facilities, you have Battersea Park, Wandsworth Common and Clapham Common.

The location is ideal for commuting, with Clapham Junction Rail Station circa 0.7 miles away (according to Google), meaning easy access London Gatwick Airport, London Victoria, London Waterloo and connections to the London Underground Network.



1



1

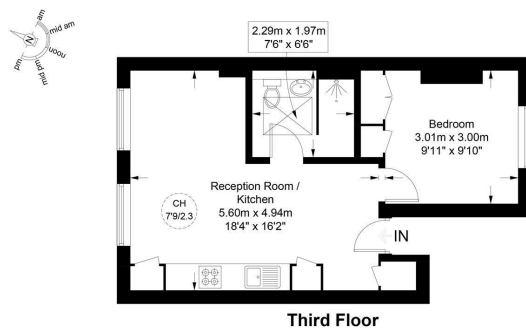


1

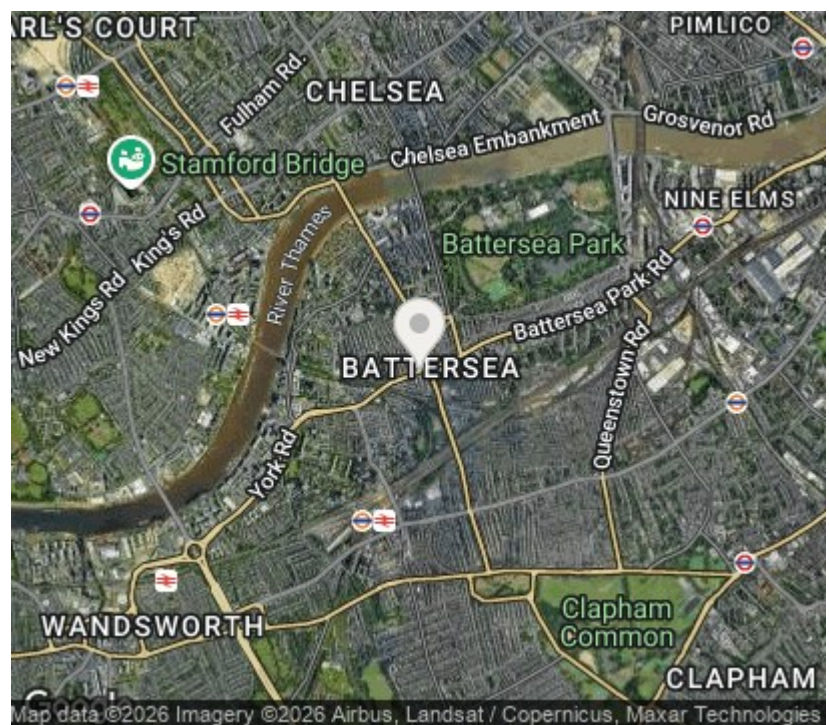


Battersea Park Road, SW11

Approximate Gross Internal Area = 407 sq ft / 37.8 sq m



This plan is for layout guidance only and is not drawn to scale unless stated. All dimensions, including windows, doors, and the Total Gross Internal Area (GIA), are approximate. For precise measurements, please consult a qualified architect or surveyor before making any decisions based on this plan.



Orlando Reid Sales 1-3 Old Town, Clapham, London, SW4 0JT

Tel: 020 7627 3197

Email: sales@orlandoreid.co.uk

Agents Note: Whilst every care has been taken to prepare these sales particulars, they are for guidance purposes only. All measurements are approximate are for general guidance purposes only and whilst every care has been taken to ensure their accuracy, they should not be relied upon and potential buyers are advised to recheck the measurements.