



31 Draycott Avenue | | LONDON | SW3 3BS

£3,115 Per month

**ESON2**  
REAL ESTATE

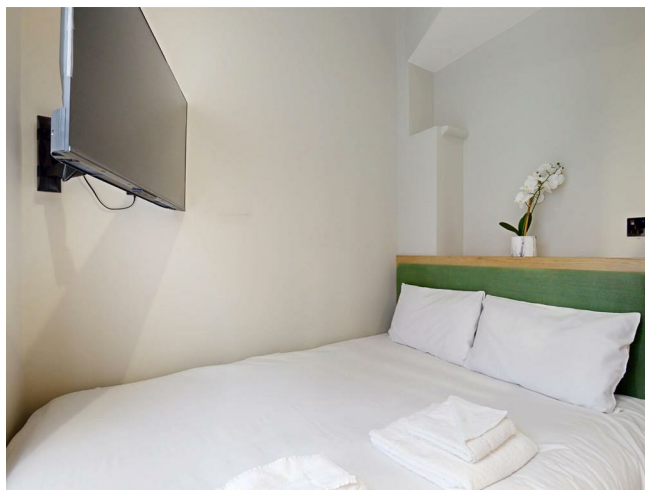
## Key features

- Open-Plan Living
- High-End Kitchen
- Luxurious Bathroom
- Smart Design
- Gym Facilities
- Workspace Facilities
- 24/7 Security

## Description

Enjoy comfort and convenience in this charming studio apartment in prestigious Sloane Square. Ideal for professionals or students seeking a stylish and central London home.

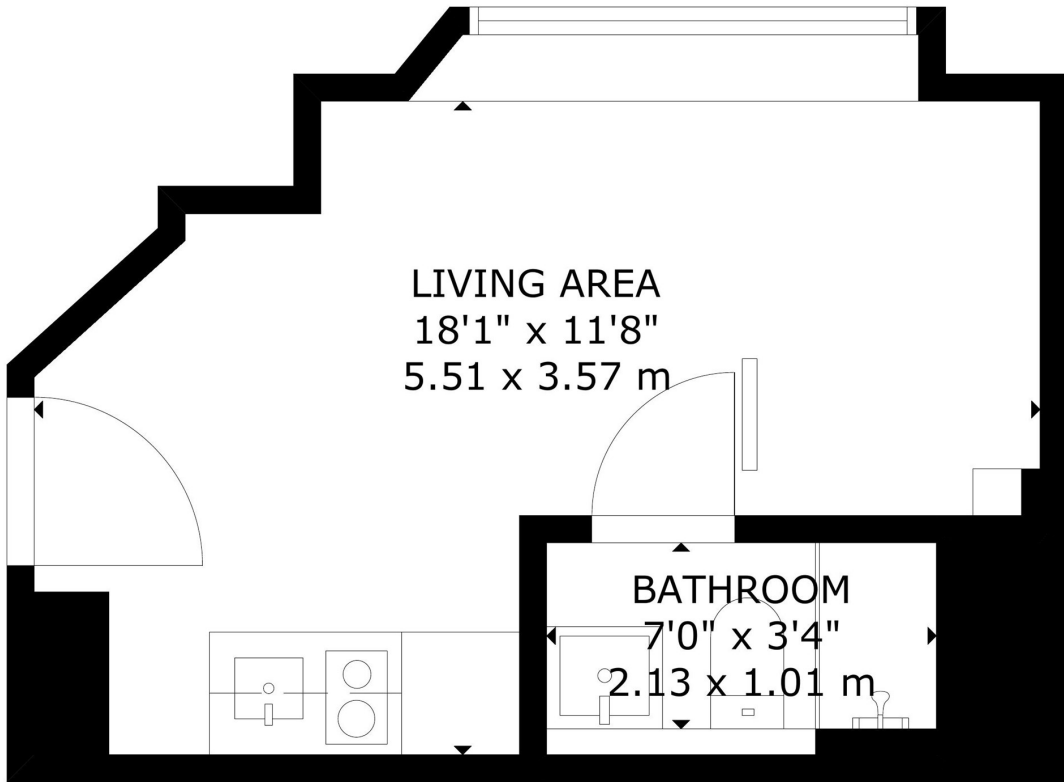
## Directions



Brand-new modern studio in Chelsea SW3, offering a stylish and functional living space in one of London's most desirable neighbourhoods. Contemporary interiors, sleek finishes, and an open-plan layout create a bright, airy environment, with large windows providing plentiful natural light.

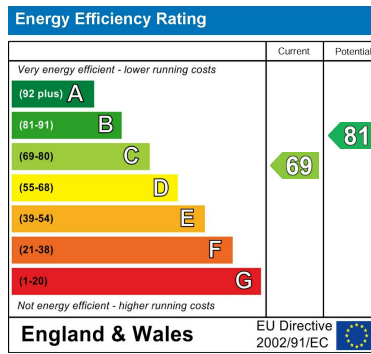


Floor plans



LOWER GROUND FLOOR

GROSS INTERNAL AREA  
TOTAL: 19 m<sup>2</sup>/207 sq.ft  
LOWER GROUND FLOOR: 19 m<sup>2</sup>/207 sq.ft  
SIZE AND DIMENSIONS ARE APPROXIMATE, ACTUAL MAY VARY



Council Tax Band      EPC Rating C



301 Michelin House 81 Fulham road  
London  
Greater London  
SW3 6RD  
07920 257649  
fayeel@eson2.co.uk  
www.eson2.co.uk