



DANIEL GREEN

exp[®] UK

@ daniel.green@exp.uk.com

🌐 danielgreen.exp.uk.com

📞 020 3930 3550 / 07541 999 544

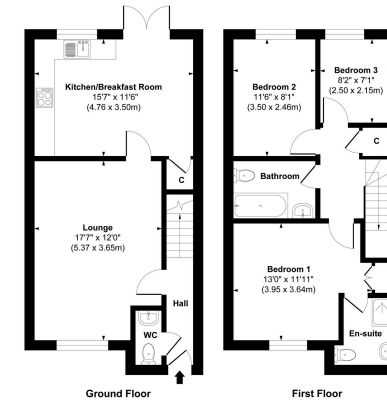
4 Jubilee Close,
£445,000

3 2 1



- ***PLEASE QUOTE REFERENCE - DG1277***
- Stylish Three Bedroom Semi-Detached Family Home
- Contemporary 15'7" Kitchen/Breakfast Room – Perfect For Entertaining
- Modern Family Bathroom Plus Downstairs Cloakroom
- Covered Car Port with Parking For Two Vehicles
- Exclusive Private Cul-De-Sac
- Impressive 17'9" Bright & Spacious Living Room
- Principal Bedroom With Sleek En-Suite
- Gas Central Heating





Approx. Gross Internal Floor Area 952 sq. ft. / 88.43 sq. m.
 This footprint is intended for illustrative purposes only and should be used as a general guide. All measurements are approximate and not to scale.
 Exact dimensions should be independently verified.

A beautifully presented three-bedroom semi-detached home, tucked away in a sought-after private cul-de-sac. Offering spacious, modern living with a stylish kitchen/breakfast room, generous living area, and a principal bedroom with en suite, this home is perfect for families and professionals alike. Complete with parking for two cars and conveniently located close to excellent amenities and transport links, this is a fantastic opportunity not to be missed.

