



Towan Avenue, Fishermead, Milton Keynes, MK6 2DR

welcome to

Towan Avenue, Fishermead, Milton Keynes

Situated close to CMK and its facilities stands this SPLIT-LEVEL MAISONETTE. Ideal for a 1ST TIME BUYER or as a BUY TO LET the property has a GROUND FLOOR KITCHEN/BREAKFAST ROOM & BEDROOM, 1st FLOOR LOUNGE with BALCONY, further BEDROOMS & BATHROOM. Outside PRIVATE REAR GARDEN & GARAGE.

Entrance Hall

Stairs to first floor, two storage cupboards, radiator and doors to bedroom two and kitchen.

Ground Floor Kitchen/Diner

Partially tiled fitted kitchen with a mix of wall and base units with work surface over, stainless steel sink with drainer, and space for a cooker. Space for a washing machine and a fridge/freezer. Space for a dining table and chairs. Extractor fan and double-glazed Patio doors leading out to the garden.

Ground Floor Bedroom Two

Radiator and double-glazed window.

1st Floor Lounge

TV point, 2 radiators, double-glazed window to the front and double-glazed Patio doors to the balcony.

1st Floor Bedroom One

Radiator and double-glazed window.

1st Floor Bedroom Three

Radiator and double-glazed window.

1st Floor Bathroom

Partially tiled with a wash hand basin with cupboard under and a bath with a shower over. Radiator.

1st Floor Cloakroom

Partially tiled with a wash hand basin and WC.

Outside

Rear Garden

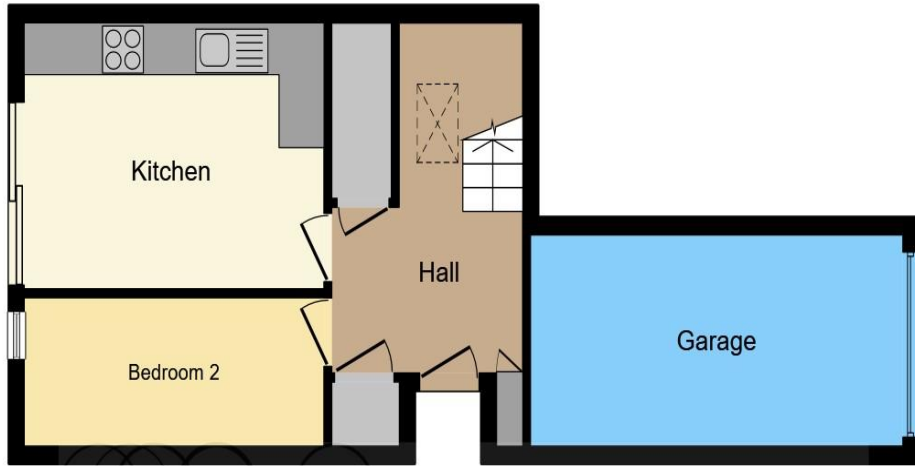
Laid to lawn with paved patio area.

Garage

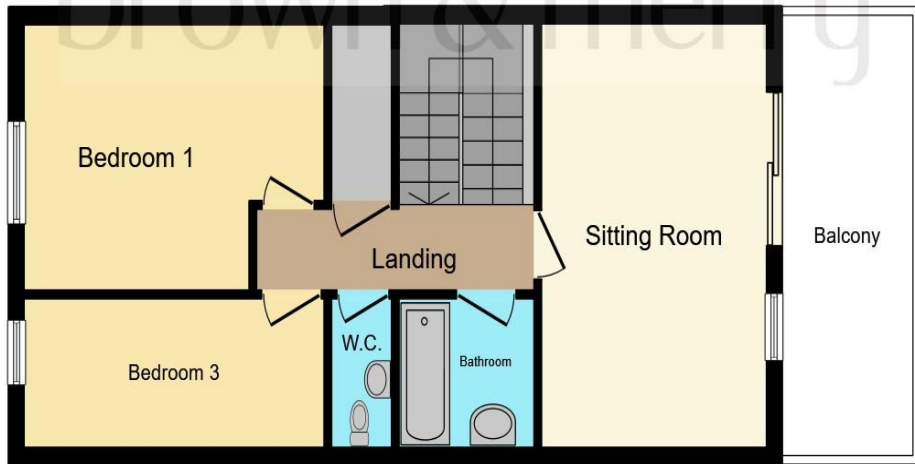
Garage with an up and over door.

Parking

Resident parking.



Ground Floor



First Floor

This plan is for illustration purposes only and may not be representative of the property. Plan not to scale.

Powered by audioagent.com



welcome to

Towan Avenue,

Fishermead, Milton Keynes

- THREE-BEDROOM MAISONETTE
- SPLIT LEVEL ACCOMMODATION
- PRIVATE REAR GARDEN
- GARAGE
- CLOSE TO CENTRAL MILTON KEYNES

Tenure: Leasehold EPC Rating: C

Council Tax Band: A Service Charge: 1328.64

Ground Rent: Ask Agent

This is a Leasehold property with details as follows; Term of Lease 125 years from 26 Jun 1989. Should you require further information please contact the branch. Please Note additional fees could be incurred for items such as Leasehold packs.

guide price

£210,000



view this property online [brownandmerry.co.uk/Property/NPL108061](https://www.brownandmerry.co.uk/Property/NPL108061)



Property Ref:
NPL108061 - 0006

1. MONEY LAUNDERING REGULATIONS Intending purchasers will be asked to produce identification documentation at a later stage and we would ask for your co-operation in order that there is no delay in agreeing the sale. 2. These particulars do not constitute part or all of an offer or contract. 3. The measurements indicated are supplied for guidance only and as such must be considered incorrect. Potential buyers are advised to recheck measurements before committing to any expense. 4. We have not tested any apparatus, equipment, fixtures or services and it is in the buyers interest to check the working condition of any appliances. 5. Where an EPC, or a Home Report (Scotland only) is held for this property, it is available for inspection at the branch by appointment. If you require a printed version of a Home Report, you will need to pay a reasonable production charge reflecting printing and other costs. 6. We are not able to offer an opinion either written or verbal on the content of these reports and this must be obtained from your legal representative. 7. Whilst we take care in preparing these reports, a buyer should ensure that his/her legal representative confirms as soon as possible all matters relating to title including the extent and boundaries of the property and other important matters before exchange of contracts.

Brown & Merry is a trading name of Sequence (UK) Limited which is registered in England and Wales under company number 4268443, Registered Office is Cumbria House, 16-20 Hockliffe Street, Leighton Buzzard, Bedfordshire, LU7 1GN. VAT Registration Number is 500 2481 05.


brown & merry



01908 611242



newportpagnell@brownandmerry.co.uk



74A High Street, Newport Pagnell, MILTON
KEYNES, Buckinghamshire, MK16 8AQ



[brownandmerry.co.uk](https://www.brownandmerry.co.uk)