



Luke Miller & Associates

ESTATE AGENTS LETTINGS AGENTS FINANCE



St Oswalds Front Street, Sowerby, YO7 1JB
Chain Free £229,995

Positioned within easy reach of the town centre and offered with no onward chain, School House is ready for a straightforward purchase. The layout provides a generous reception hall, two separate reception rooms and a practical kitchen to the ground floor, with two double bedrooms and a bathroom upstairs. Outside, the property benefits from off-road parking and a garage. A practical home with clear potential.



The Property

On entry, the large reception hall creates a useful central space and could double as a dining area if needed, as it sits next to the kitchen. The kitchen is fitted with base and wall units, roll-top work surfaces and a range of integrated appliances, and it also has a door opening to the front garden. From the dining area, a short run of steps leads to the second reception space, which has a door out to the rear. From here, the layout opens into two further reception rooms. The main living room has windows on two sides and a living-flame gas fire with a stone hearth as its focal point. The second reception room works well as a study, though it appears to have been used previously as an additional bedroom, with fitted wardrobes and a window to the rear.

Upstairs, there are two double bedrooms and a main bathroom, which includes a separate shower, a panelled bath, WC and pedestal wash basin, with natural light provided by a roof light.

Outside, the front garden is well kept, mainly lawned with established beds and borders. A driveway leads to a good-sized single garage with power, lighting and a water tap. To the rear, a public footpath gives straightforward access to the parks, playing fields and Cod Beck, as well as the village hall in Sowerby.

Important Information

Council: North Yorkshire

Tax Band: B

EPC: E

EPC Link: <https://find-energy-certificate.service.gov.uk/energy-certificate/2186-1936-6051-9654-8281>

Disclaimer

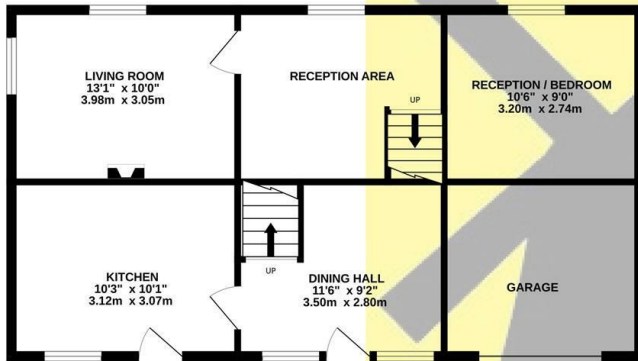
We strive to ensure that our sales particulars are accurate and reliable. However, they do not constitute an offer or form part of any contract, and should not be relied upon as statements of representation or fact. Services, systems, and appliances mentioned in this specification have not been tested by us, and no guarantee is given regarding their operational ability or efficiency. All measurements are provided as a general guide for prospective buyers and are not exact. Please note that some particulars may still require vendor approval, and images may have been enhanced. For clarification or further information on any details, please contact us—especially if you are traveling a significant distance to view the property. Fixtures and fittings not explicitly mentioned are subject to agreement with the seller.

The copyright and all other intellectual property rights on this site, including marketing materials, trademarks, service marks, trade names, text, graphics, code, files, and links, are owned by Luke Miller & Associates. All rights are reserved.

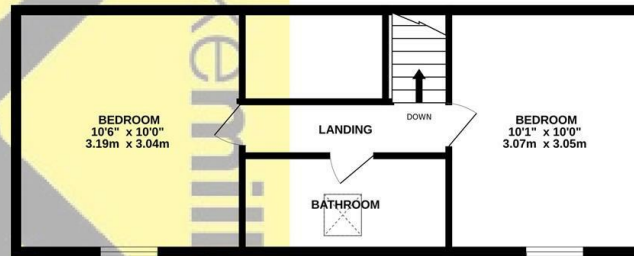




GROUND FLOOR
725 sq.ft. (67.4 sq.m.) approx.



1ST FLOOR
504 sq.ft. (46.9 sq.m.) approx.



TOTAL FLOOR AREA: 1230 sq.ft. (114.2 sq.m.) approx.

Whilst every attempt has been made to ensure the accuracy of the floorplan contained here, measurements of doors, windows, rooms and any other items are approximate and no responsibility is taken for any error, omission or mis-statement. This plan is for illustrative purposes only and should be used as such by any prospective purchaser. The services, systems and appliances shown have not been tested and no guarantee as to their operability or efficiency can be given.
Made with Metropix ©2025

