

CHARMILL

RESIDENTIAL



Great Titchfield Street, London W1W

£1,650

A unique warehouse style two-bedroom apartment located in the heart of Fitzrovia. The apartment benefits from wood flooring throughout, fully fitted open plan kitchen to reception room with exposed brickwork, two double bedrooms, guest W/C and a contemporary bathroom suite. This stunning property is ideally located moments from Oxford Circus and Goodge Street Underground Stations.

Once a print works, the interior of this property has been totally restyled by award winning architects HÖT.

Many of the original features, such as the Crittal windows, have been recreated and the interior has been skilfully developed to create a totally modern living space with a fashionable industrial, nostalgia vibe. Details include exposed brick and ironwork blended with concealed lighting, reclaimed timber and high-quality fittings and appliances.

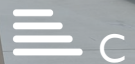
Accommodation comprises one and two bedroom apartments with the top floor being a duplex with a precision engineered, electrically operated, roof light that glides open to provide access to a spacious, fully decked roof terrace with it's own atmospheric lighting and power.

This is stylish London living at its very best.

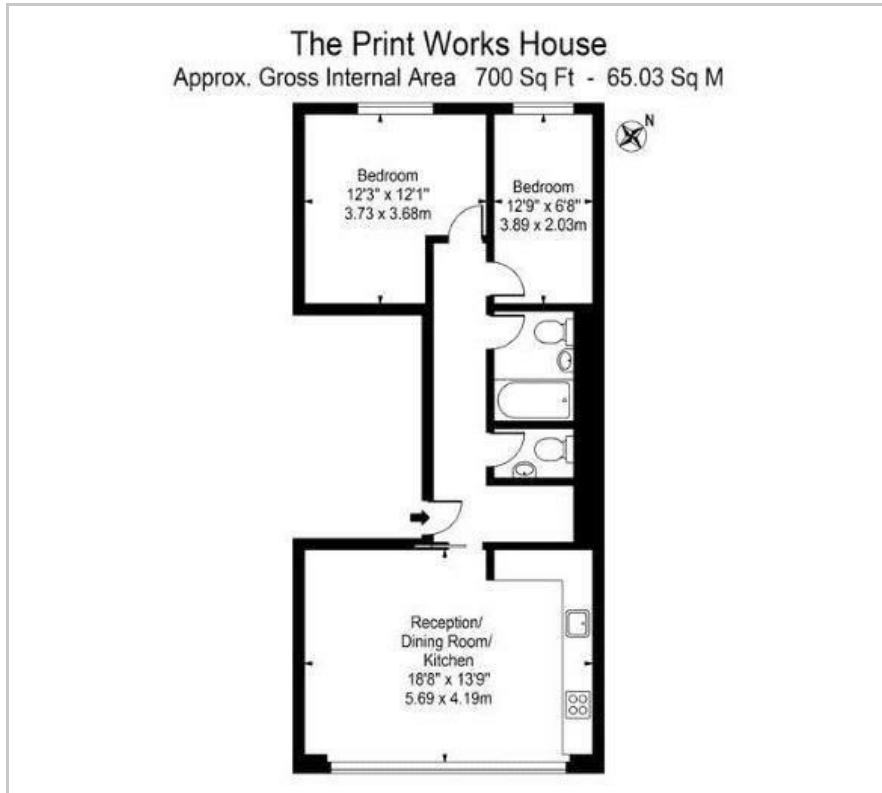
Viewing

Please contact us on 020 7046 6276 if you wish to arrange a viewing appointment for this property or require further information.

- Two bedrooms
- Exposed brickwork
- Open plan kitchen
- Wooden flooring
- Excellent location



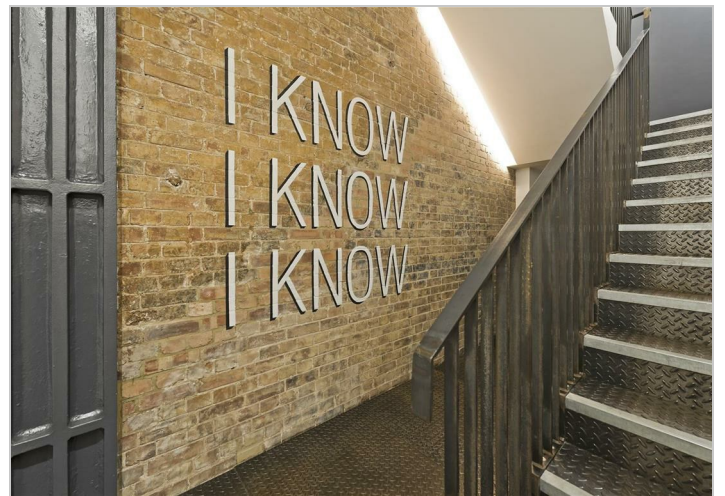
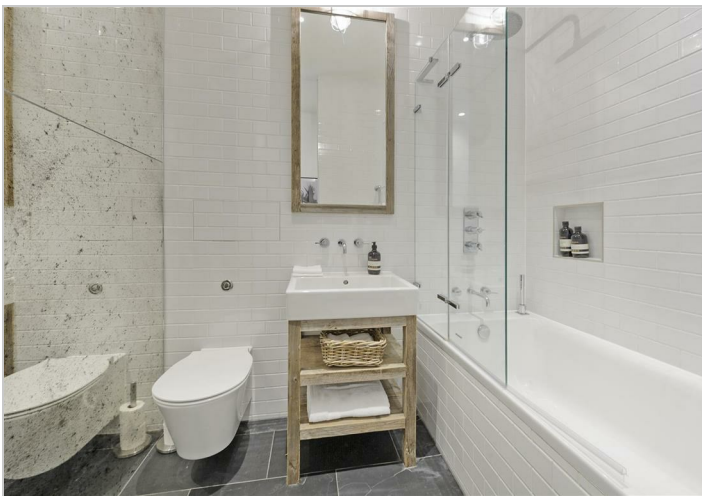
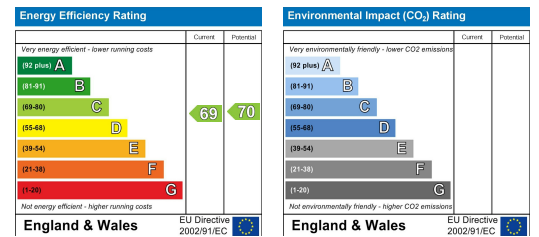
Floor Plan



Area Map



Energy Efficiency Graph



These particulars, whilst believed to be accurate are set out as a general outline only for guidance and do not constitute any part of an offer or contract. Intending purchasers should not rely on them as statements of representation of fact, but must satisfy themselves by inspection or otherwise as to their accuracy. No person in this firm's employment has the authority to make or give any representation or warranty in respect of the property.

020 7046 6276 • lettings@charmillresidential.co.uk • 51 Maida Vale, Little Venice, London W9 1SD
charmillresidential.co.uk