



Vickers Lane, Hartlepool, TS25 2DN

£240,000

Beautifully remodelled and tastefully upgraded throughout, this immaculate four-bedroom detached home is ideally situated in the highly sought-after coastal area of Seaton Carew, within easy reach of the seafront and a range of local amenities. Finished to a stylish and contemporary standard, early viewing is strongly recommended to fully appreciate this impressive family home.

The property benefits from a recently refitted kitchen, a converted garage providing an additional reception room and utility area, low-maintenance gardens, and four generously sized double bedrooms.

The accommodation briefly comprises an entrance porch leading into the welcoming hallway, cloakroom/WC, spacious lounge, second reception room, utility area, and an open-plan dining kitchen fitted with integrated appliances. To the first floor there are four double bedrooms, including a master bedroom with en-suite facilities, along with a modern family bathroom.

Externally, the enclosed rear garden offers a sunny patio seating area and a timber shed, ideal for outdoor relaxation and entertaining. To the front, the open-plan garden is laid to lawn and complemented by a double-width tarmac driveway providing ample off-street parking.

Entrance Porch

uPVC double-glazed front door with glazed panels leading into the entrance area, featuring a radiator and a door providing access to the main hallway.

Hallway

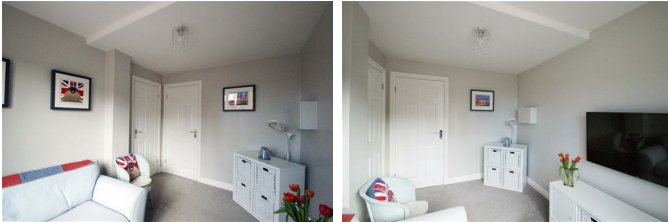
Radiator and staircase leading to the first floor.

Reception 1 14'0" x 11'5" (4.29 x 3.48)



A bright reception room featuring a uPVC double-glazed window to the front aspect and a radiator, creating a comfortable living space.

Reception 2 11'3" x 7'4" (3.43 x 2.26)



A lovely bright second reception room, created from a converted garage. The room benefits from a uPVC double-glazed window to the front aspect and a radiator, offering a versatile space ideal for a lounge, family room or home office.

Kitchen/Dining Room 24'2" x 10'5" (7.39 x 3.20)



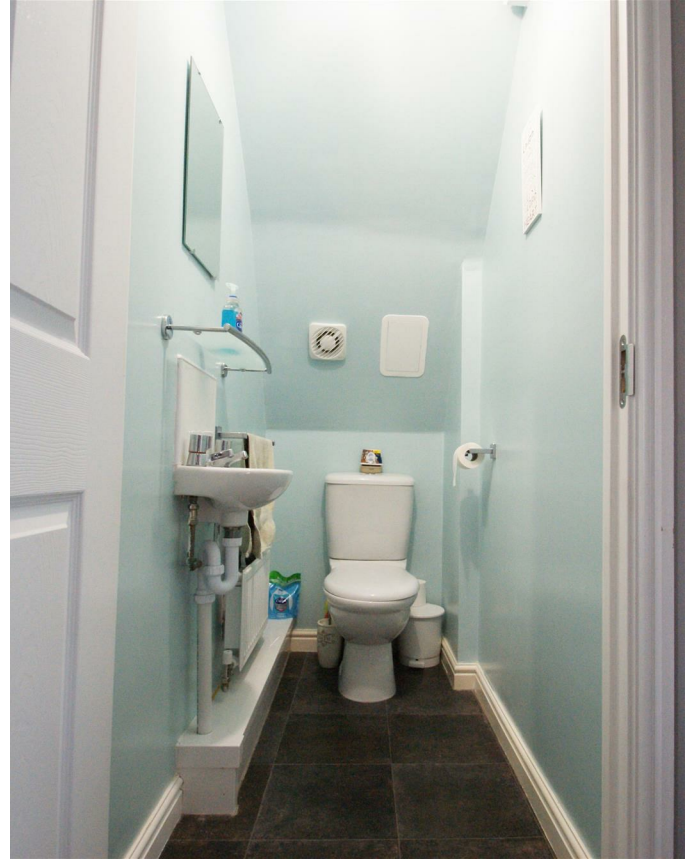
The kitchen has been refitted with a range of modern 'Shaker' style wall, base and drawer units with matching worktops. It features an inset sink and drainer with mixer tap, a four-ring gas hob with illuminated extractor hood, fan-assisted double oven, and integrated space for a fridge/freezer and dishwasher. A uPVC double-glazed window to the rear provides natural light.

The dining area offers a bright and welcoming space for family meals, with uPVC double-glazed French doors opening onto the rear garden and a radiator for comfort.

Utility Room 7'4" x 5'8" (2.26 x 1.73)

A practical utility space with plumbing and provision for a washing machine and tumble dryer.

Cloakroom/WC



Fitted with a white suite comprising a low-level WC and pedestal wash hand basin with part-tiled splashback. Additional features include a radiator and extractor fan.

Bedroom 1 (Front) 12'7" x 11'3" (3.86 x 3.45)



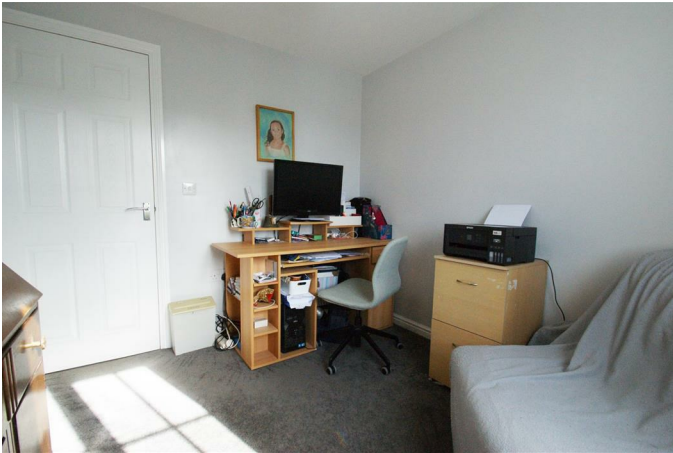
A bright and spacious front-facing double bedroom featuring a uPVC double-glazed window to the front aspect, fitted wardrobes providing ample storage, radiator and En-suite.

En-Suite



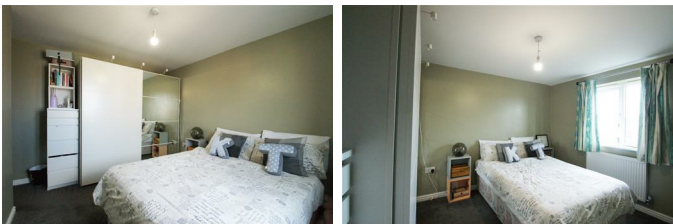
Fitted with a white and chrome suite comprising a shower cubicle with thermostatic shower, pedestal wash hand basin and low-level WC. The room also benefits from part-tiled walls, a uPVC double-glazed opaque window to the front aspect, extractor fan, and radiator.

Bedroom 4 (Front) 9'3" x 8'5" (2.84 x 2.57)



A well-proportioned bedroom featuring a uPVC double-glazed window to the front aspect and a radiator.

Bedroom 2 (Rear) 11'8" x 8'11" (3.58 x 2.74)



A well-proportioned bedroom featuring a uPVC double-glazed window to the rear aspect, built-in wardrobes providing useful storage, and a radiator.

Bedroom 3 (Rear) 8'7" x 8'5" (2.64 x 2.57)



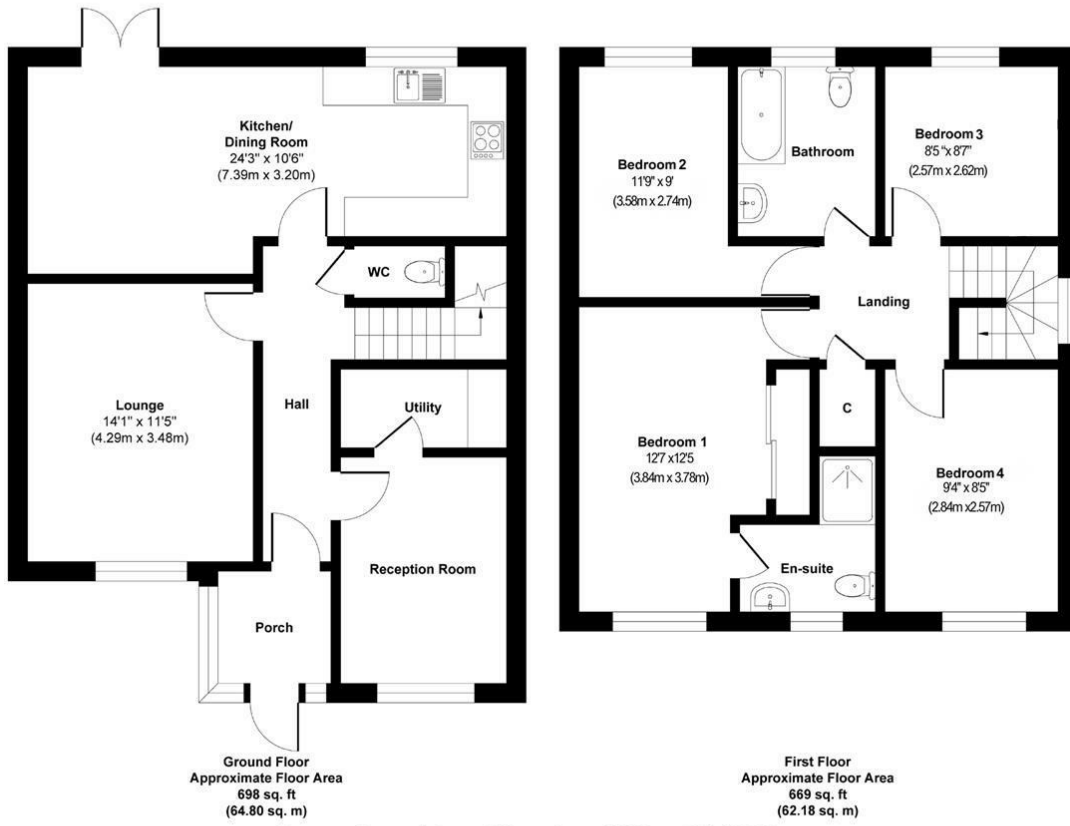
A comfortable bedroom featuring a uPVC double-glazed window to the rear aspect and a radiator.

Bathroom

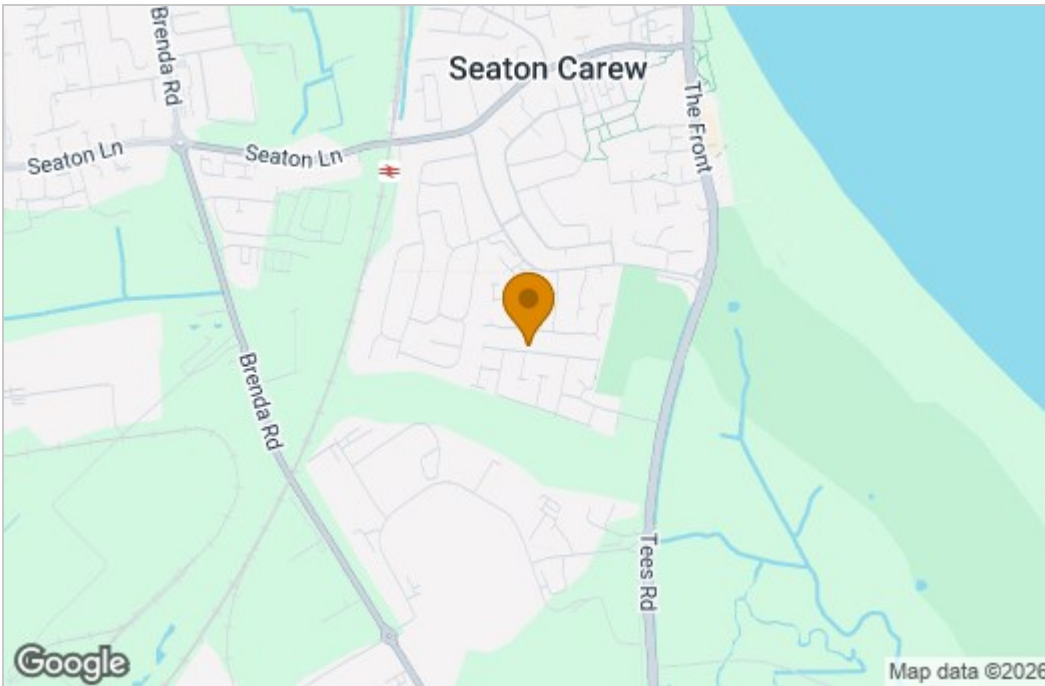


A bright and modern family bathroom fitted with a white suite comprising a panelled bath with shower over and glass screen, low-level WC, and pedestal wash hand basin. The room features part-tiled walls around the bath area, a heated chrome towel rail, and a uPVC double-glazed window providing natural light and ventilation. Finished with contemporary flooring and a light, neutral décor.

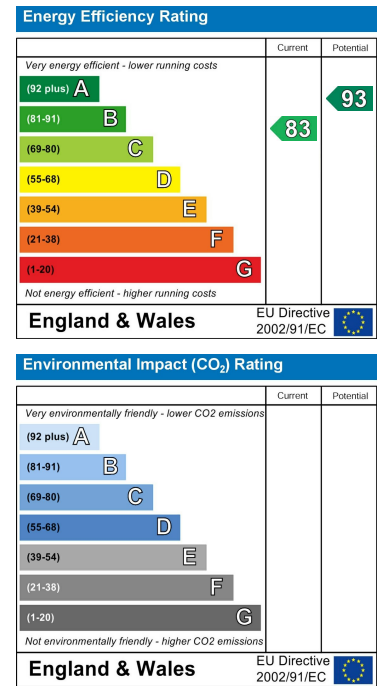
Floor Plan



Area Map



Energy Efficiency Graph



These particulars, whilst believed to be accurate are set out as a general outline only for guidance and do not constitute any part of an offer or contract. Intending purchasers should not rely on them as statements of representation of fact, but must satisfy themselves by inspection or otherwise as to their accuracy. No person in this firm's employment has the authority to make or give any representation or warranty in respect of the property.

Open House Teesside