



## New Festival Avenue, E14 £600,000

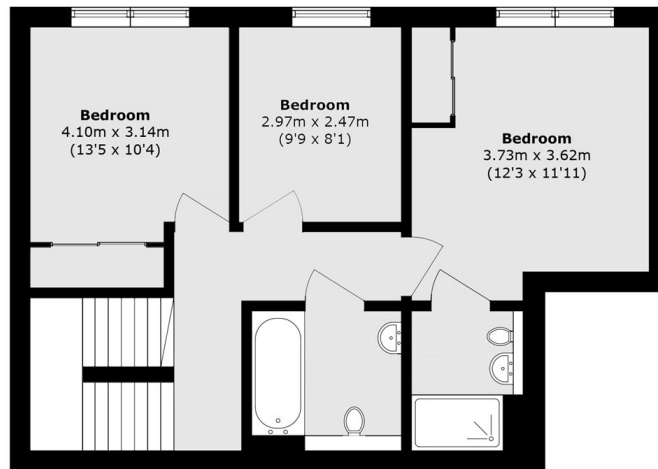
We are pleased to present this three-bedroom penthouse, set within a highly sought-after modern development. Arranged over the 12th and 13th floors, the apartment benefits from a split-level layout, a large private terrace, over 1,000 sq. Ft. Of internal living space, and an abundance of natural light throughout. Residents also enjoy access to a gym, communal gardens, and a concierge service.

Moro Apartments is within walking distance of Bartlett Park and Crisp Street Market, and close to Canary Wharf's shops, bars, and restaurants. All Saints DLR is 0.4 miles away, with Westferry DLR 0.5 miles away.

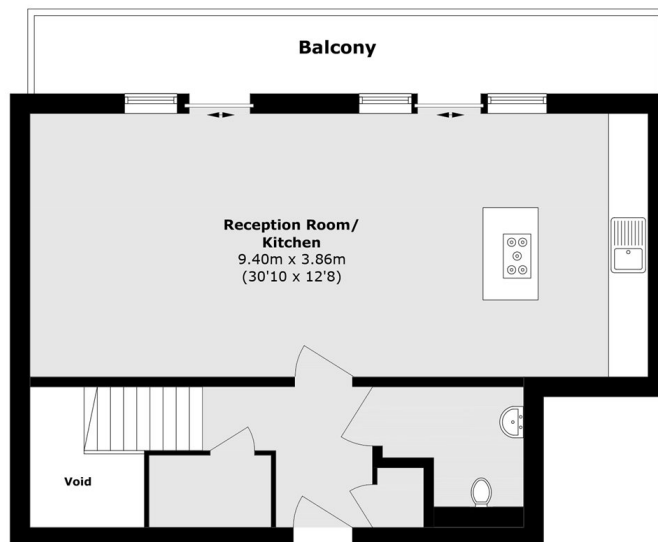
### Features

- Three Bedrooms
- Three Bathrooms
- Split Level
- 121 Square Feet Terrace
- Residents Gym
- Concierge

# New Festival Avenue, London, E14



**Thirteenth Floor**



**Twelfth Floor**

Total area (approx.): 105.7 sq. m (1137.7 sq. ft)

Total area (approx.): 11.3 sq. m (121.6 sq. ft)  
(Excluding Void)