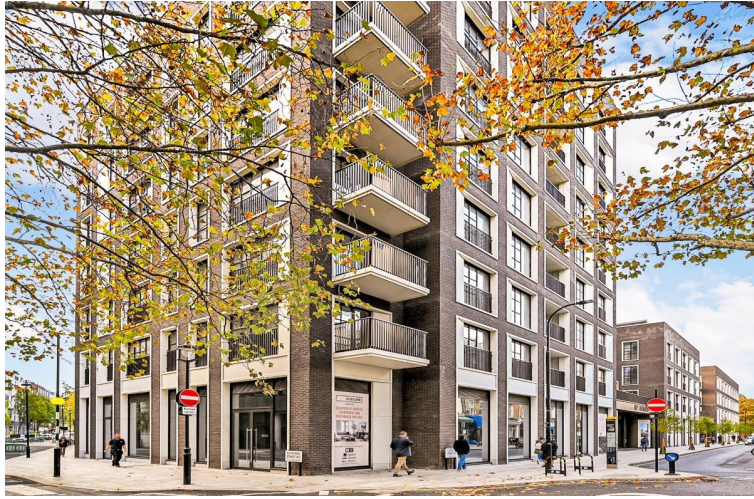
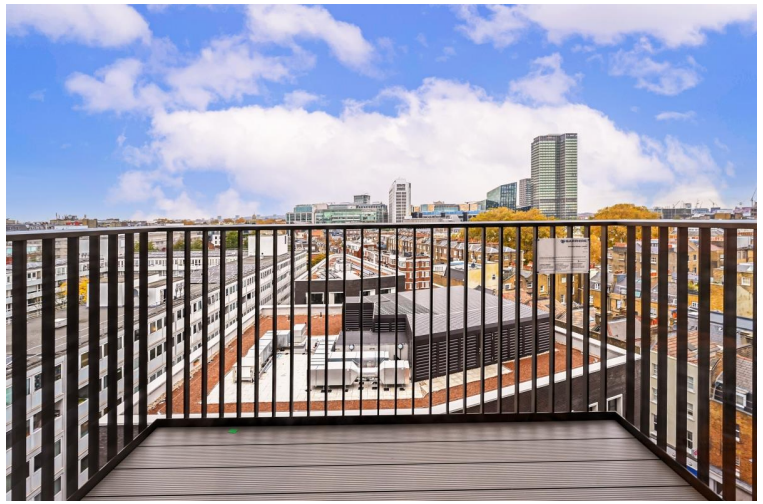
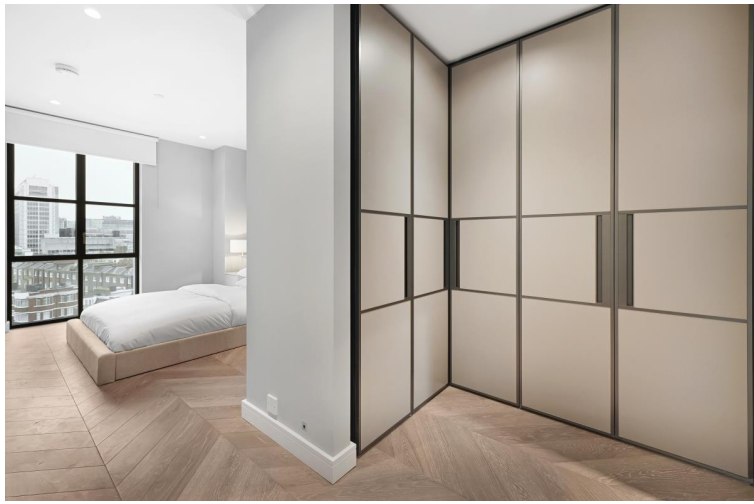


Cleveland Street, London W1T

Price £1,250 per week - Furnished







Description

This one-bedroom apartment has been crafted to the highest of specifications with a spacious and open plan living space featuring an Italian designed Kitchen with integrated Miele appliances, a well-proportioned bedroom with built in wardrobes and elegant bathroom suite with rainfall shower. The apartment further benefits from engineered timber chevron flooring throughout, comfort cooling, underfloor heating, and a private balcony.

The development provides residents with the highest quality on site facilities, including a 24 hour concierge team, residents gym & wellness suite, residents lounge, business suite, private dining space and landscaped roof top providing a tranquil space to relax after a busy day.

Council tax band: E. Rent is payable on a monthly basis, and you may be required to pay more than a month's rent in advance for tenancies with annual rents exceeding £100,000. You will be required to pay a 1 week holding deposit following a successful offer. Tenancies with annual rents up to £50,000 will require a 5 weeks' security deposit, while those exceeding this threshold will require a 6 weeks' deposit. Utility bills, council tax, telephone line and broadband are not included in the rent. As well as paying the rent, you may also be required to make some additional permitted payments. If your tenancy does not qualify as an APT, additional fees may apply. Please visit jll.co.uk/fees for details of fees that may be payable when renting a property. To check broadband and mobile phone coverage please visit Ofcom here ofcom.org.uk/phones-telecoms-and-internet/advice-for-consumers/advice/ofcom-checker

- Modern Apartment
- Luxury Development
- 24hr Concierge Service
- Open-Plan Living Space
- Private Balcony
- Wooden Flooring
- Furnished
- Residents Gym and Wellness Centre
- Deposit: £7,500
- Council Tax: Band E

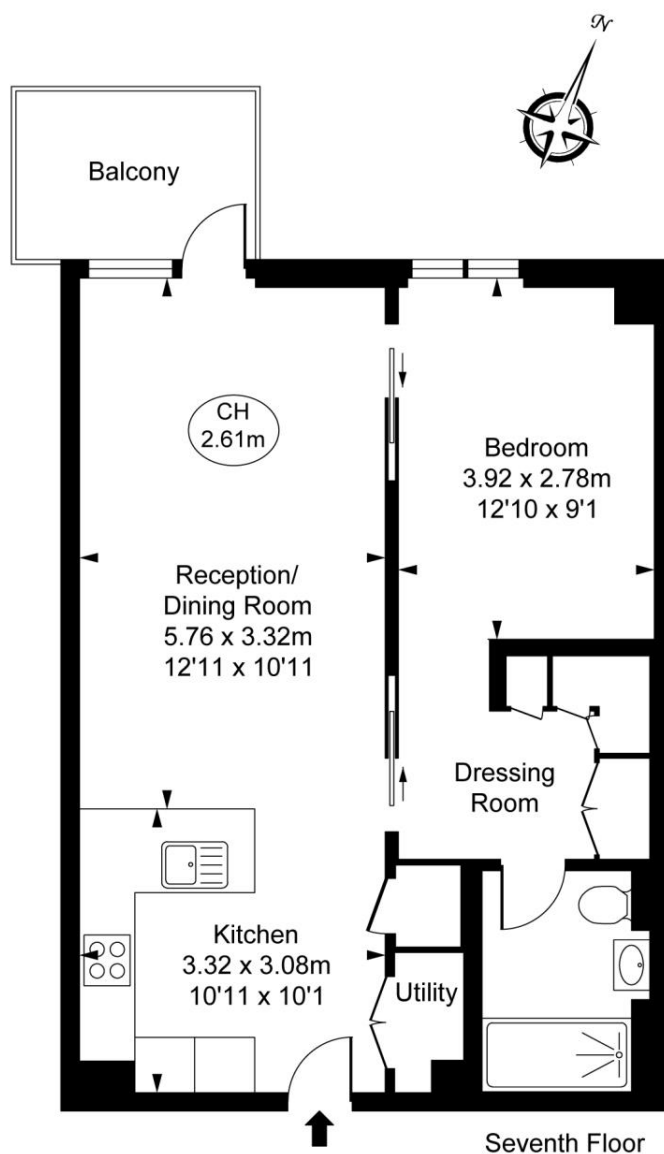
Floorplan

583 sq ft | 54 sq m

Cleveland Street, W1T

Approximate Gross Internal Area
54.53 sq m / 587 sq ft

(CH = Ceiling Heights)



This plan is not to scale. It is for guidance and not for valuation purposes.
All measurements and areas are approximate only, and have been prepared in accordance with the current edition of the RICS Code of Measuring Practice.
© Fulham Performance

Mayfair and Marylebone
St George Street,
London W1S 2FQ
+44 207 399 5550
mayfair@jll.com

Urban living, your way.

jll.co.uk/residential

© 2019 Jones Lang LaSalle IP, Inc. All rights reserved. All information contained herein is from sources deemed reliable; however, no representation or warranty is made to the accuracy thereof.

