



39 Castle Drive, Maidenhead, SL6 6DB

£795,000 Freehold

A well-proportioned four-bedroom detached family home, with space to extend (STPP), featuring a double-length tandem garage. Set in a quiet and convenient cul-de-sac, the property is ideally located within walking distance of Maidenhead town centre and the Maidenhead Elizabeth Line station, offering fast and direct links to Central London.

Entrance Hall

Understairs storage cupboard, stairs to first floor.

Shower Room

Comprising fully tiled shower with glazed enclosure, close coupled WC, wash basin set into unit with cupboard below, mirror above.

Sitting Room

Doors to:-

Dining Room

Doors leading to garden.

Kitchen

Comprising units incorporating inset stainless steel sink, range of floor and wall cupboards and drawers, work surfaces, including display cabinet, drawers and wine storage unit, built in oven, gas hob with extractor over and Zanussi electric oven below, door leading to rear garden.

First Floor Landing

Large hinged access hatch to loft, airing cupboard.

Bathroom

Suite comprising panelled bath, , wash basin set into unit with cupboard below WC, tiled walls.

Bedroom 1

Two double wardrobe cupboards.

Bedroom 2

Built-in cupboard.

Bedroom 3

Built in wardrobe.

Bedroom 4

Outside

To the front the garden is laid to lawn with driveway/off road parking for two/three cars. To the rear the garden is mainly laid to lawn with paved terraced area, established flowerbeds, vegetable patch. garage, gated side access.

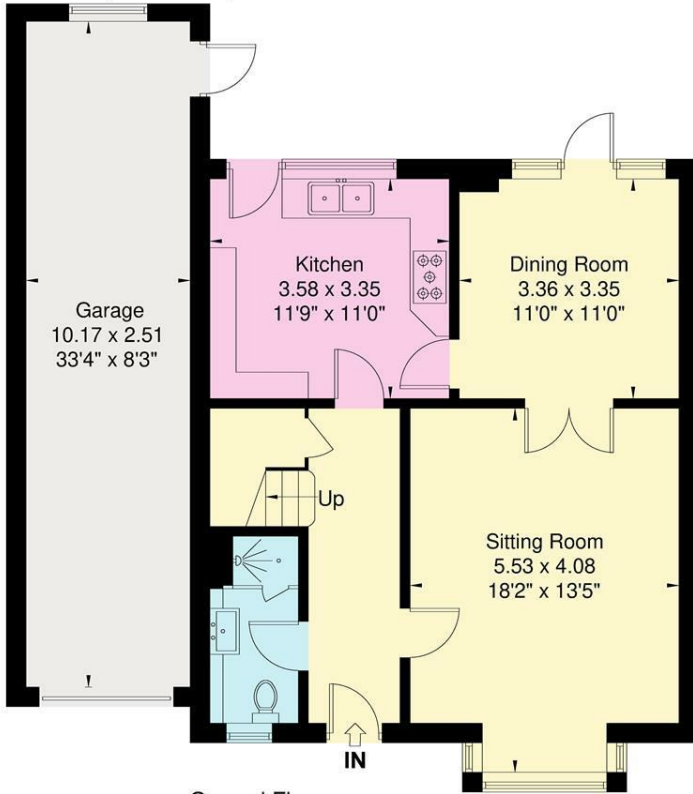
Garage

Double length tandem garage with light and power and electric garage door.

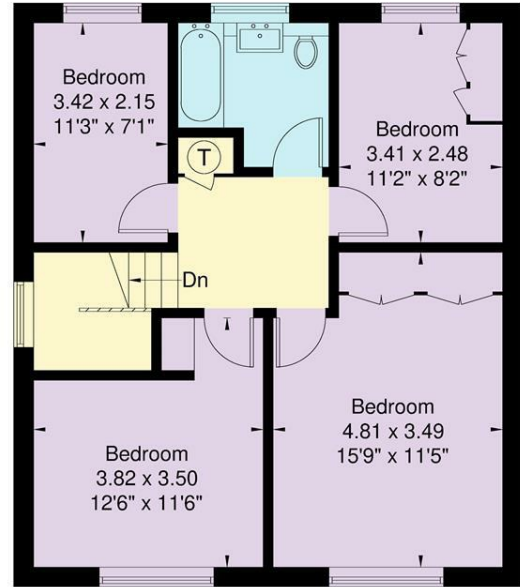
Floor Plan

Approximate Floor Area = 120.1 sq m / 1292 sq ft
 Garage = 25.5 sq m / 274 sq ft
 Total = 145.6 sq m / 1566 sq ft

Castle Drive



Ground Floor



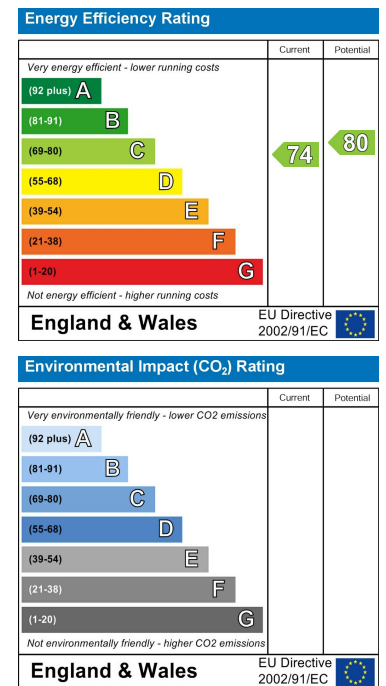
First Floor

Illustration for identification purposes only, measurements are approximate, not to scale.

Area Map



Energy Efficiency Graph



These particulars, whilst believed to be accurate are set out as a general outline only for guidance and do not constitute any part of an offer or contract. Intending purchasers should not rely on them as statements of representation of fact, but must satisfy themselves by inspection or otherwise as to their accuracy. No person in this firm's employment has the authority to make or give any representation or warranty in respect of the property.