



Main Road, Portskewett

3 Bedrooms  
2 Bathrooms  
1 Reception

£325,000





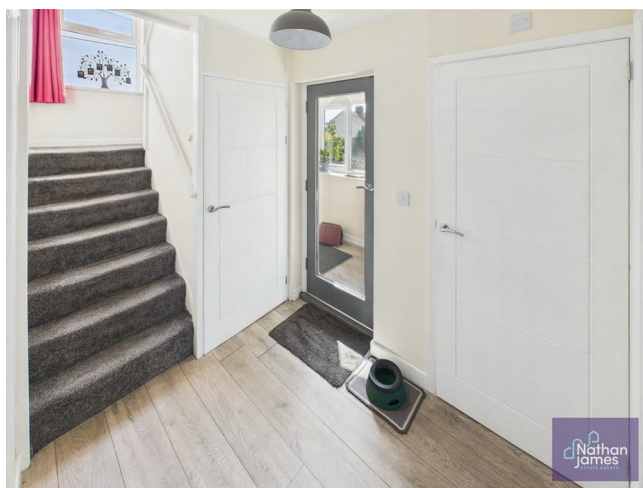
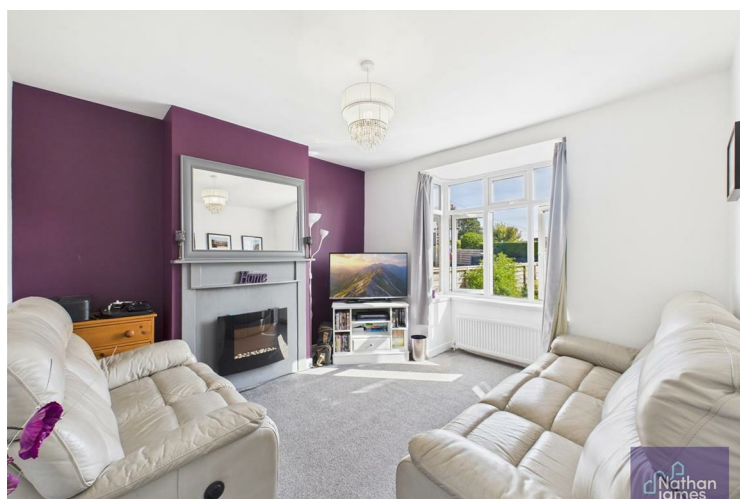
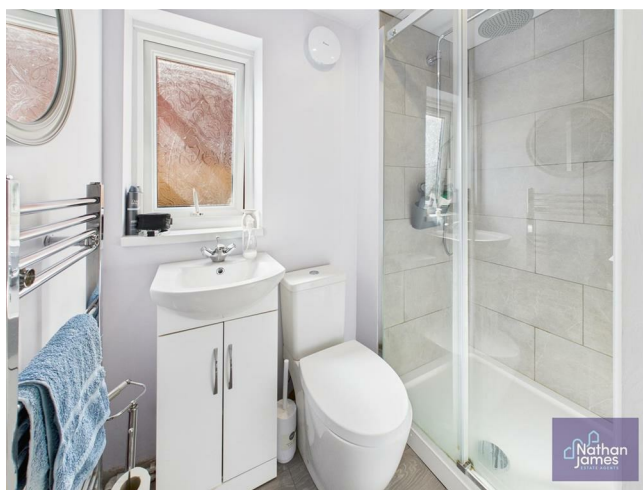
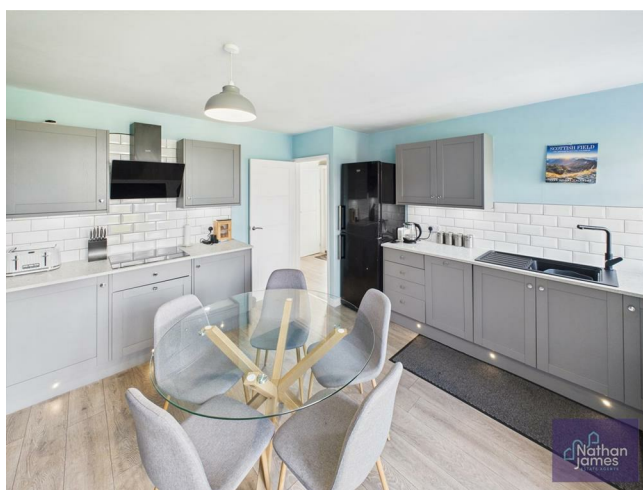
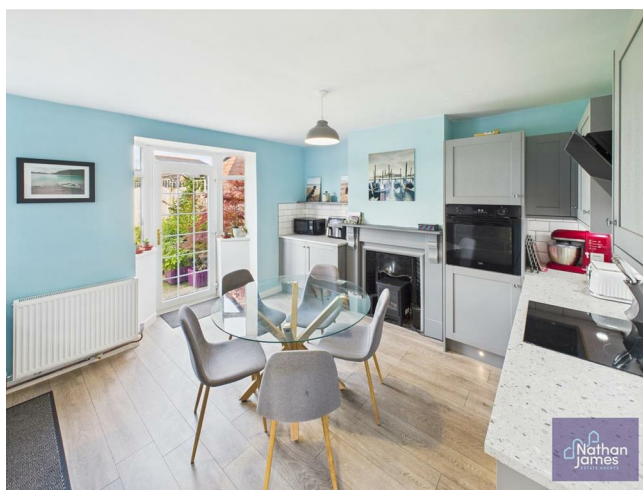
Situated on Main Road in the charming village of Portskewett, this delightful semi-detached house offers a perfect blend of comfort and convenience. With three well-proportioned bedrooms, this property is ideal for families or those seeking extra space. The layout includes a welcoming reception room, providing a warm and inviting atmosphere for relaxation or entertaining guests. The kitchen/ diner is beautifully appointed and has the benefit of a separate utility room.

The house boasts two modern bathrooms, ensuring that morning routines run smoothly and providing ample facilities for family living. The property is designed to cater to the needs of contemporary life while maintaining a homely feel.

The rear garden enjoys privacy with far reaching countryside views there is a summer house and gated access to the single garage and parking for three cars.

Parking is made easy with space for three vehicles and detached single garage, a valuable feature in this desirable location. Portskewett is known for its friendly community and offers a range of local amenities, making it a wonderful place to call home.

This semi-detached house presents an excellent opportunity for those looking to settle in a peaceful yet accessible area. With its spacious interiors and convenient location, it is sure to attract interest from a variety of buyers. Do not miss the chance to view this lovely property and envision your future in Portskewett.





Kitchen/ Dining  
14'1" x 12'4"

Sitting Room  
11'6" x 10'10"

Bedroom One  
11'8" x 11'9"

Bedroom Two  
11'7" x 9'8"

Bedroom Three  
8'8" x 7'2"

Bathroom  
12'4" x 3'10"

Garden

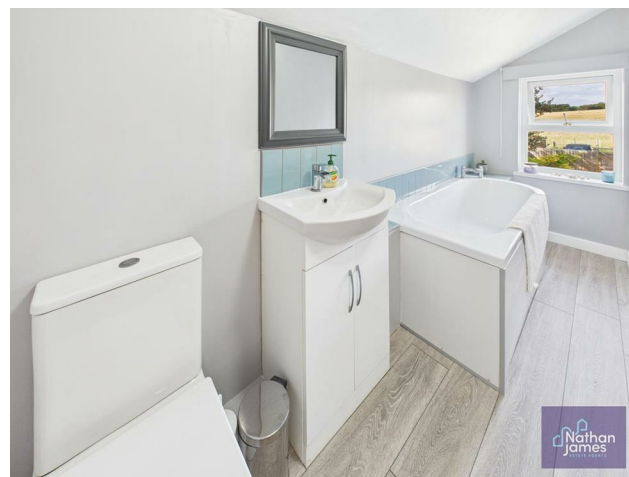
Landing  
5'4x7'0

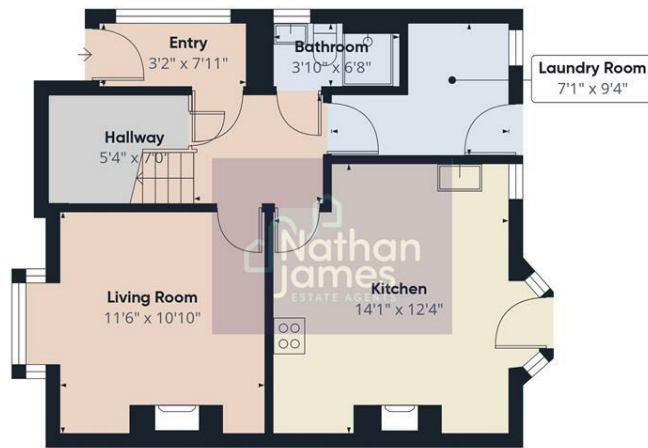
Hallway  
5'4x7'0

Utility  
7'1x9'4

Ground Floor Shower room  
3'10x6'8

Entry  
3'2x7'11





Floor 0



Floor 1

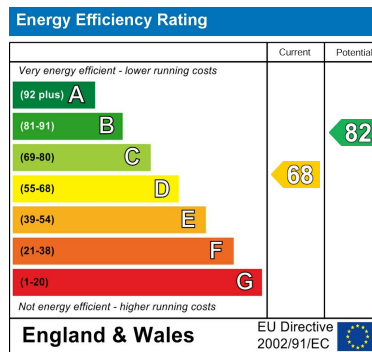


Approximate total area<sup>®</sup>  
905 ft<sup>2</sup>

(1) Excluding balconies and terraces

Calculations reference the RICS IPMS 3C standard. Measurements are approximate and not to scale. This floor plan is intended for illustration only.

GIRAFFE360



8 Newport Road  
Caldicot  
Monmouthshire  
NP26 4HX  
01291 421600

nj@nathanjamesestateagents.co.uk  
nathanjamesestateagents.com