



## Howard Road, NW2

£425,000

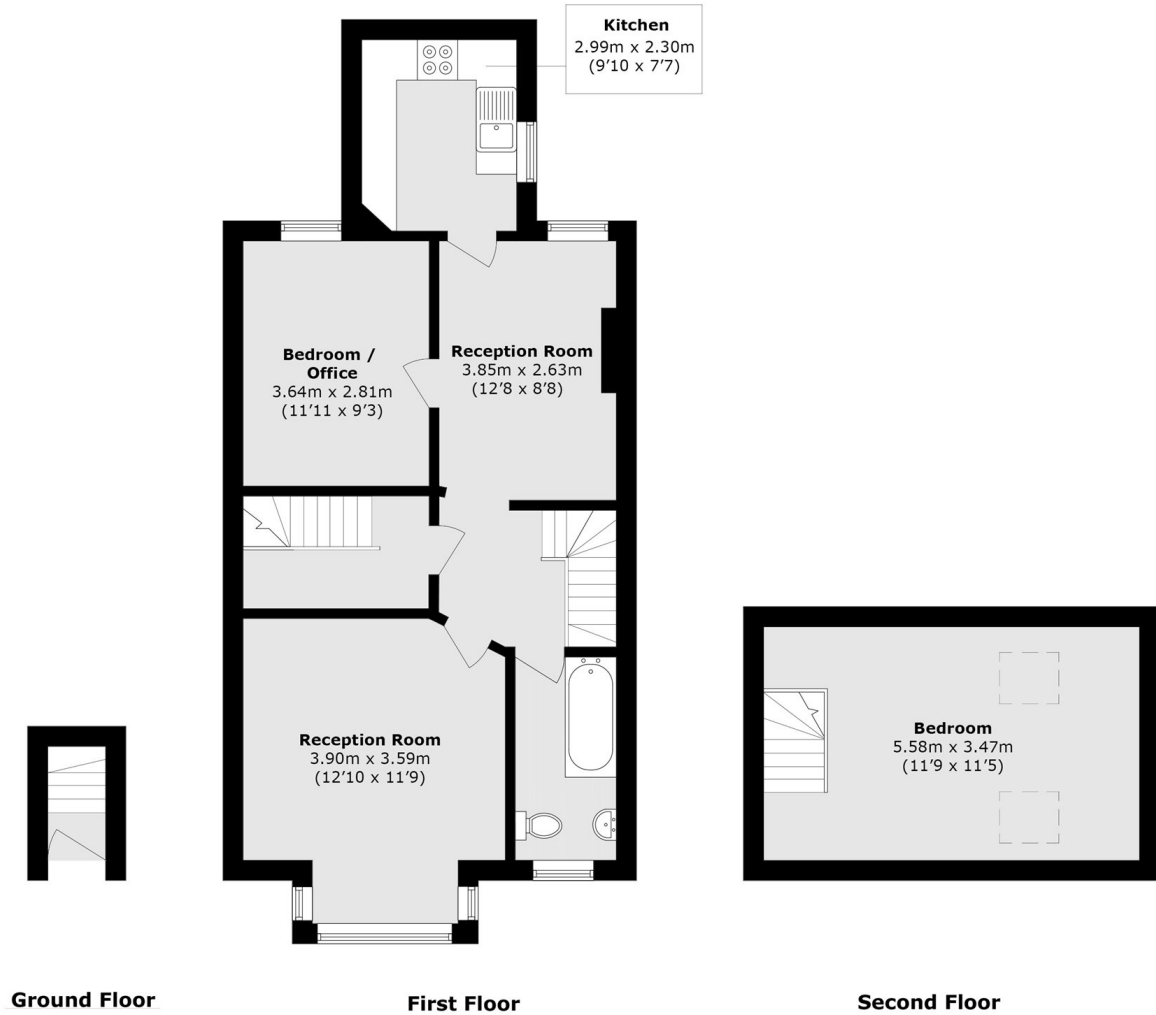
This two double bedroom maisonette measures in excess of 850 sq ft. This bright and spacious property offers two reception areas, a separate modern fitted kitchen and a bathroom. The property comes with a long lease and no onward chain.

Howard Road is ideally located just moments from the variety of local amenities of Willesden Green and Cricklewood, including shops, cafés and restaurants, and numerous transport links including Cricklewood station (Thameslink) and Willesden Green station.

### Features

- Maisonette
- Two Bedrooms
- Two Reception Areas
- Separate Fitted Kitchen
- Long Lease
- Chain Free

# Howard Road, London, NW2



Total area (approx.): 80.5 sq. m (851.4 sq. ft)