

Twickenham Road, TW7

£430,000

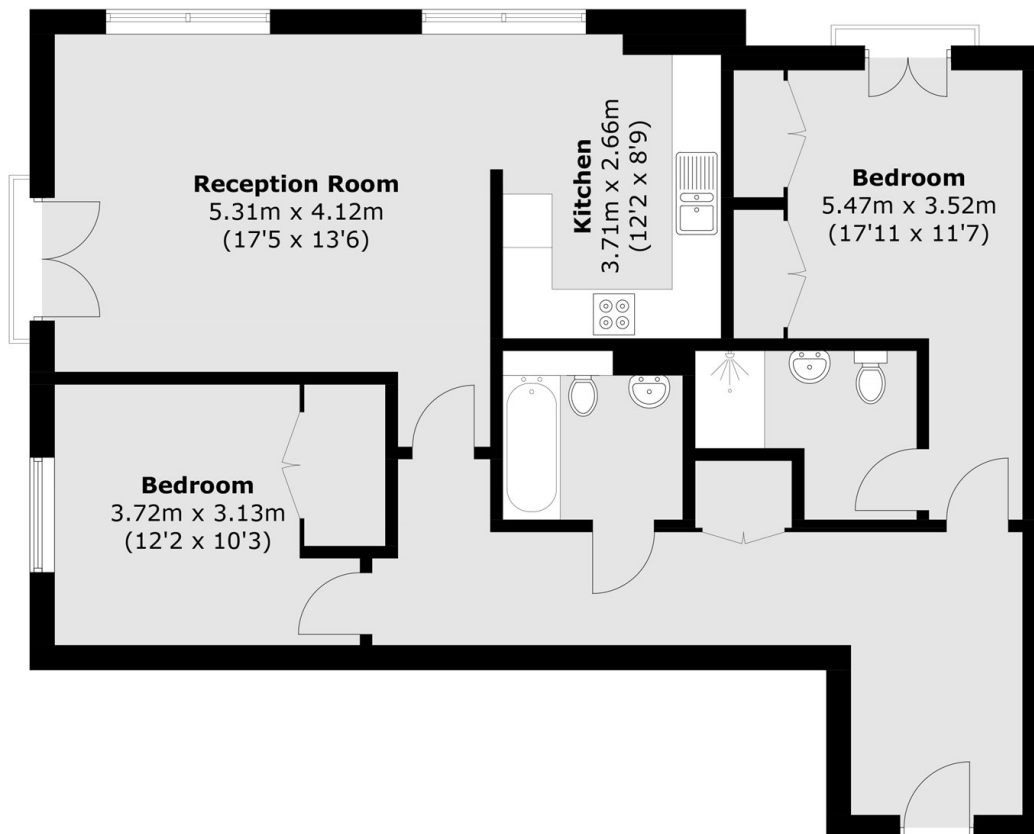
A two bedroom second floor apartment located within an incredibly prestigious gated development. Offered to the market with allocated underground parking, two bathrooms and no onward chain this property is not to be missed out on.

Holme Court is located close to the charming amenities of Old Isleworth and is only a short distance from the River Thames and its delightful towpath walk to Richmond town centre. Redlees Park and Syon Park are close by.

Features

- Modern Development
- Spacious Living Room
- Large Kitchen
- Two Double Bedrooms
- Two Bathrooms
- Underground Parking

Twickenham Road, Old Isleworth, TW7



Total area (approx.): 91.1 sq. m (980.6 sq. ft)