



LINDEN GARDENS, W2

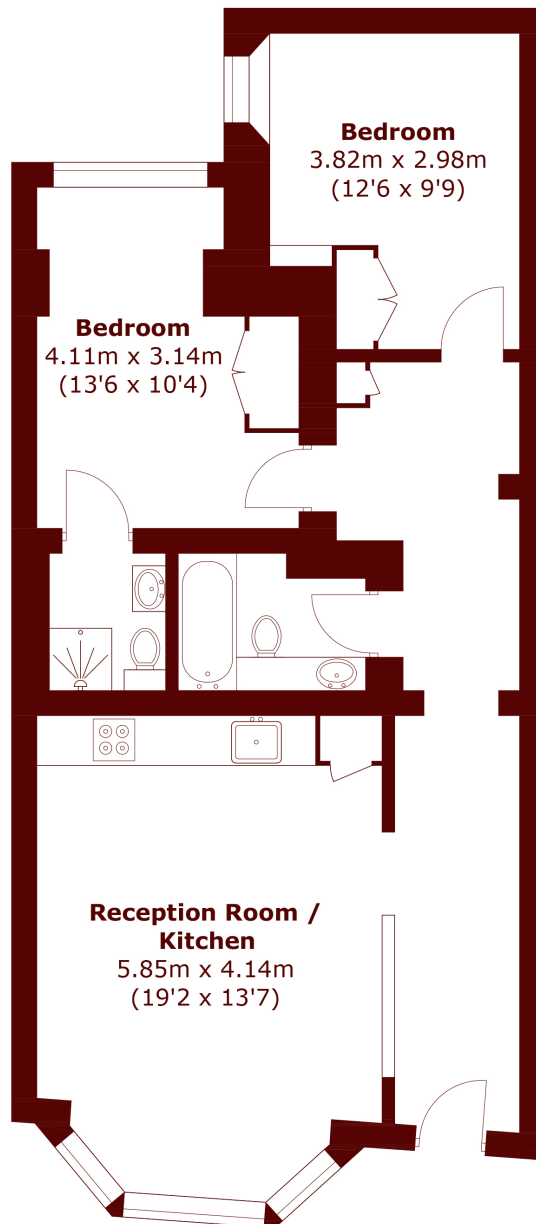
£923 per week (£4,000 per month)

An exceptional two-bedroom apartment finished to an impeccable standard in the heart of Notting Hill.

Two bedroom
Two bathroom
Wooden floors

Amazing location
Ample storage
Open-plan kitchen

STEP INSIDE LINDEN GARDENS



Lower ground Floor

Total area (approx.): 73.1 sq. m (786.8 sq. ft)

Notting Hill
020 7313 6910

Energy Rating: C We aim to make our particulars both accurate and reliable. However, they are not guaranteed; nor do they form part of an offer or contract. If you require clarification on any points then please contact us, especially if you're traveling some distance to view. Please note that appliances and heating systems have not been tested and therefore no warranties can be given as to their good working order

MARSH &
PARSONS