



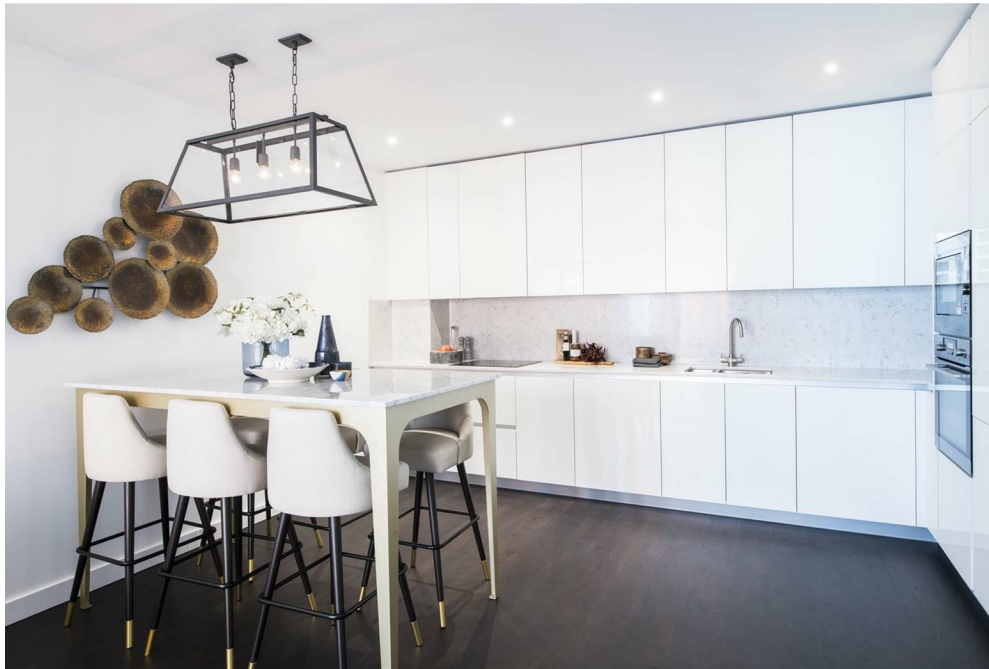
Thornes House, Charles Clowes Walk,
Nine Elms, SW11

£1,785 Per Week,

NAPIER WATT

T: 0207 935 0011
E: enquiries@napierwatt.co.uk
W: napierwatt.co.uk

35 Berkeley Square, Mayfair, London, W1J 5BF







Description

An impressive interior designed 1,123 Sq Ft three double-bedroom, two-bathroom apartment located in Thornes House forming part of The Residence Collection in Nine Elms on London's iconic South Bank. This luxury apartment is situated on the 8th floor of this prestigious building which features a 24-hour manned concierge along with a dedicated building manager, lift service, gym, media room, board room and secure underground parking. The apartment comprises a spacious reception room complete with Samsung Smart TV's with Bose sound bars incorporating a built in Amazon Alexa to control the apartments lighting, TV and heating systems along with a private balcony. The reception room is open plan with a fully fitted kitchen featuring integrated AEG appliances with floor to ceiling windows providing far reaching views across London. The apartment offers a master bedroom suite with walk-in wardrobes, an en-suite bathroom featuring a custom designed mirrored unit with integrated demisting features as well as a private balcony from the bedroom. The apartment benefits from two further double-bedrooms and a family shower room. The apartment also benefits from ample storage space.

3 Bedroom : 2 Bathroom : EPC Rating B : Council Tax G

Key Features

- TWO TERRACES
- 24 HOUR CONCIERGE
- AIR CONDITIONING
- CCTV
- ON SITE GYM
- FLEXIBLE RENTAL TERMS
- LIFT
- AVAILABLE FURNISHED & UNFURNISHED

Terms



IMPORTANT: We would inform prospective purchasers that these sales particulars have been prepared as a general guide only. A detailed survey has not been carried out, nor the services, appliances and fittings tested. Room sizes should not be relied upon for furnishing purposes and are approximate. If floor plans are included, they are for guidance only and illustration purposes only and may not be to scale. If there are any important matters likely to affect your decision to buy, please contact us before viewing the property.