

## Southwark Bridge Road, London SE1

Price £1,275 per week - Furnished







## Description

An exceptional 3 bedroom premier apartment in the sought after Two Fifty One (251) development, Elephant & Castle.

Offered fully furnished, this stunning 3 bedroom apartment is situated on the 32nd floor and boasts approximately 1318 sq ft of living space. The property comprises 3 double bedrooms with large fitted wardrobes to bedrooms 1 and 2, spacious reception room with winter garden and stunning views of the City skyline, fully fitted kitchen with Siemens appliances, wood flooring and excellent storage space.

Two Fifty One (251) is located in the heart of Southwark, zone 1 and well situated for the City of London with Elephant & Castle station just 0.1 miles away. Residents also benefit from 24 hour concierge, on site gymnasium, private cinema and private club / dining areas.

Council tax band: G.

Rent is payable on a monthly basis and you may be required to pay more than a month's rent in advance, depending on your circumstances. You will be required to pay a 1 week holding deposit following a successful offer. Tenancies with annual rents up to £50,000 will require a 5 weeks' security deposit, while those exceeding this threshold will require a 6 weeks' deposit.

Utility bills, council tax, telephone line and broadband are not included in the rent. As well as paying the rent, you may also be required to make some additional permitted payments. If your tenancy does not qualify as an AST, additional fees may apply.

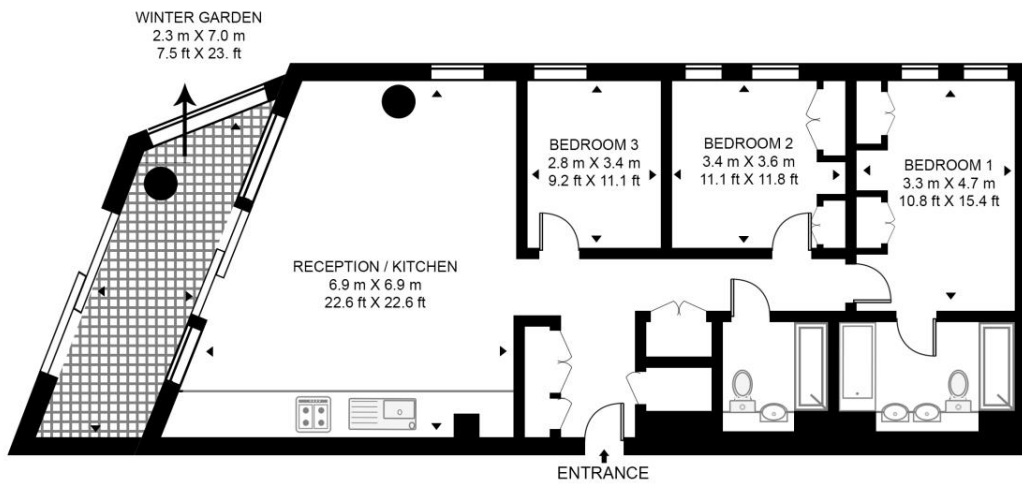
Please visit [jll.co.uk/fees](http://jll.co.uk/fees) for details of fees that may be payable when renting a property. To check broadband and mobile phone coverage please visit Ofcom here [ofcom.org.uk/phones-telecoms-and-internet/advice-for-consumers/advice/ofcom-checker](http://ofcom.org.uk/phones-telecoms-and-internet/advice-for-consumers/advice/ofcom-checker)

- 3 Bedrooms
- 2 Bathrooms
- 32nd Floor
- Large Winter Garden
- On-site leisure facilities
- 24 hour concierge
- 0.1 miles from Elephant & Castle Station
- Approx. 1318 sq ft (122.5 sq m)
- Furnished
- EPC: B

# Floorplan

1,318 sq ft | 122 sq m

**TWO FIFTY ONE, SOUTHWARK BRIDGE ROAD**  
APPROXIMATE GROSS INTERNAL FLOOR AREA 1318 SQ.FT (122.5 SQ.M)



THIRTY SECOND FLOOR



**HDVA**

This floor plan has been defined by the RICS Code of Measurement. This floor plan and all others are for approximate representative purposes only and upon usage is agreed to as such by the client.

WWW: [hdvirtualart.com](http://hdvirtualart.com) | TEL: 0203.974.1567 | EMAIL: [info@hdvirtualart.com](mailto:info@hdvirtualart.com)

City  
25 Walbrook The Walbrook  
Building,  
London EC4N 8AF  
+4420 7337 4000

*Urban living, your way.*

[jll.co.uk/residential](http://jll.co.uk/residential)

© 2019 Jones Lang LaSalle IP, Inc. All rights reserved. All information contained herein is from sources deemed reliable; however, no representation or warranty is made to the accuracy thereof.

