



THE LITTLE BOLTONS, SW5

£500,000

'The Little Boltons' Entrance

Short Leasehold

First Floor

Award Winning Gardens

Large Family Apartment

Energy rating c

@marshandparsons
marshandparsons.co.uk

MARSH &
PARSONS



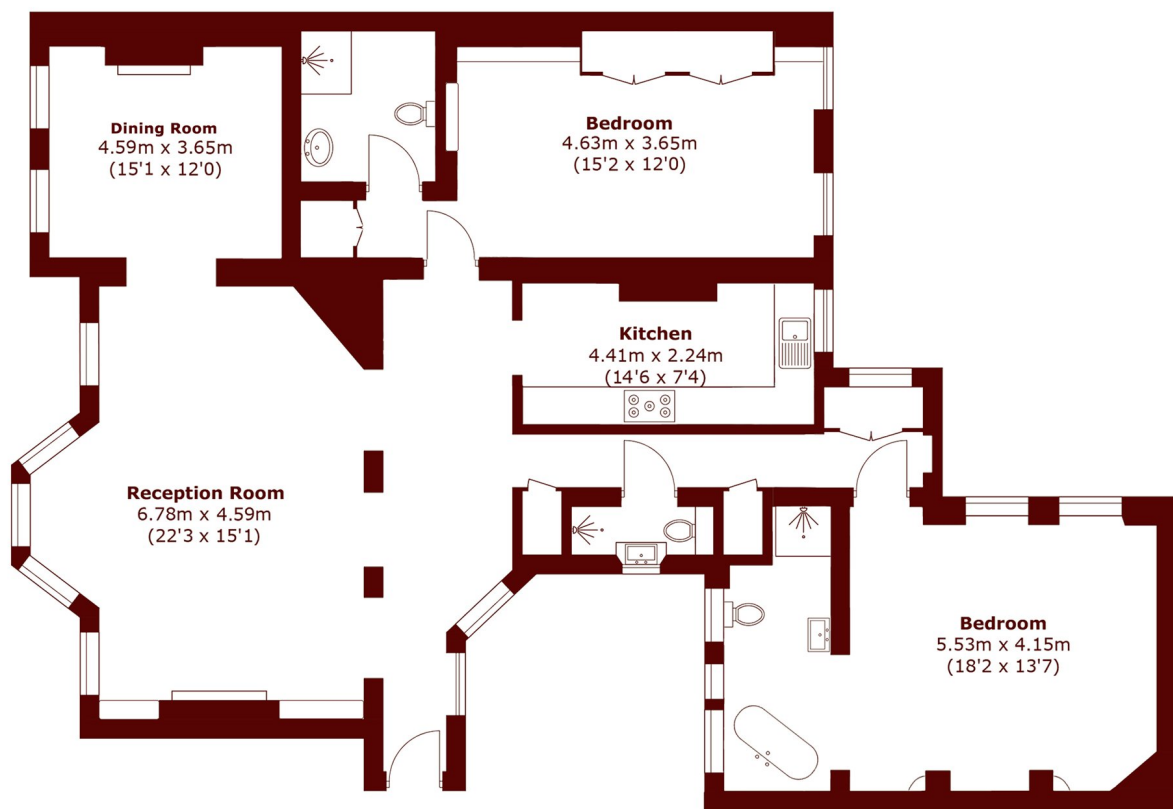
ABOUT THE PROPERTY

* LEASEHOLD: 10.5 YEARS REMAINING * The property has been well maintained although an incoming buyer may wish to refurbish and personalise. Accommodation is well-balanced comprising two bedrooms, three bathrooms, separate integrated kitchen and a large double reception room with west-facing views over the communal gardens.

Coleherne Court is a traditional Edwardian mansion block, built between 1901-1904 on the site of Coleherne House and Hereford House (demolished circa 1899). The complex was constructed in red brick and Portland stone and is decorated with motifs to soften the imposing style of the architecture.



STEP INSIDE THE LITTLE BOLTONS



Total area (approx.): 149.0 sq. m (1,603.8 sq. ft)

Earls Court
020 7244 2210

Energy Rating: We aim to make our particulars both accurate and reliable. However, they are not guaranteed; nor do they form part of an offer or contract. If you require clarification on any points then please contact us, especially if you're traveling some distance to view. Please note that appliances and heating systems have not been tested and therefore no warranties can be given as to their good working order

**MARSH &
PARSONS**