



# New Archers Court

SE16

Asking Price £625,000

The apartment is on the third floor and is offered in excellent condition throughout, with a large variety of original warehouse character including exposed brickwork and wooden beams. There is a spacious south facing open plan living room

**CHESTERTONS**



# New Archers Court

## SE16

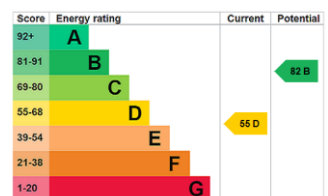
A two double bedroom warehouse conversion located in the heart of Rotherhithe Village.

The apartment is on the third floor and is offered in excellent condition throughout, with a large variety of original warehouse character including exposed brickwork and wooden beams. There is a spacious south facing open plan living room with a fully fitted integrated kitchen, two double bedrooms and a bathroom.



New Archers Court is one of Rotherhithe Village's most prestigious warehouse conversions and provides easy access to Rotherhithe station ( London Overground) Bermondsey (Jubilee line) and Canada Water (Jubilee and London Overground). Rotherhithe Village is a charming part of London with cobbled streets, a beautiful church and the historic Mayflower pub.

**Tenure:** Leasehold 128 years 8 months  
**Service Charge:** £3650 Approx  
**Ground Rent:** £300  
**Local Authority:** Southwark  
**Council Tax Band:**



### *Chestertons Surrey Quays Sales*

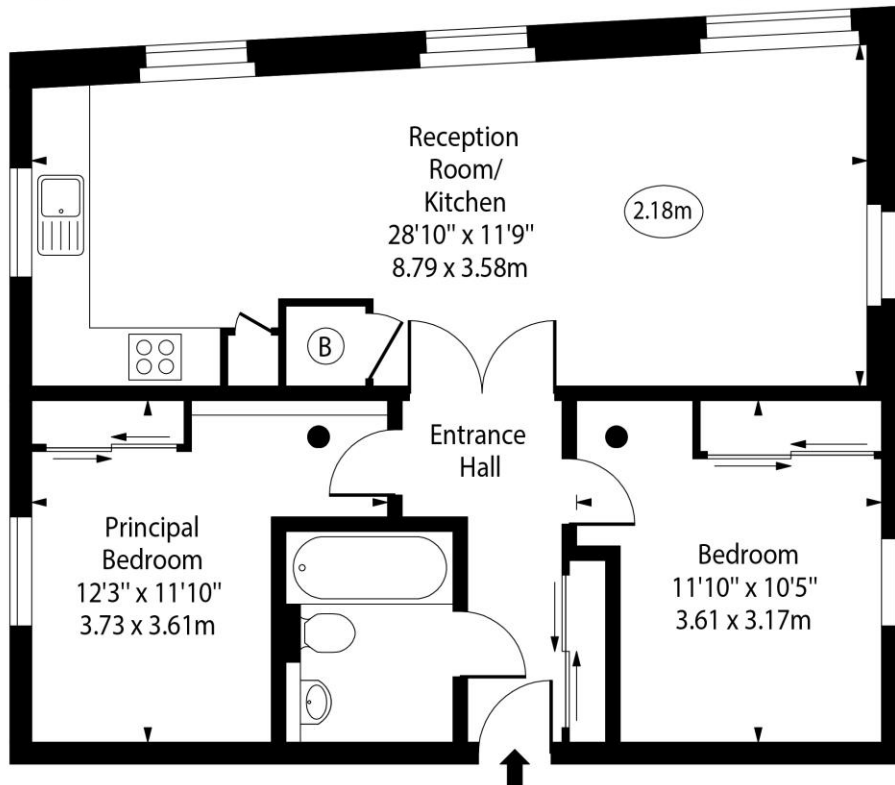
2 Plough Way  
 London  
 SE16 2EU

+44 (0)20 7378 0644  
 chestertons.co.uk

New Archers Court,  
Rotherhithe Street, SE16



○ - Ceiling Height



Third Floor

Approx Gross Internal Area 675 Sq Ft - 62.71 Sq M

Every attempt has been made to ensure the accuracy of the floor plan shown. However, all measurements, fixtures, fittings, and data shown are approximate interpretations and for illustrative purposes only. Measured according to the RICS. Not To Scale.

[www.goldlens.co.uk](http://www.goldlens.co.uk)

Ref. No. 030917K

