



Loporto Browne
— RESIDENTIAL —

Kensington Gardens Square, W2

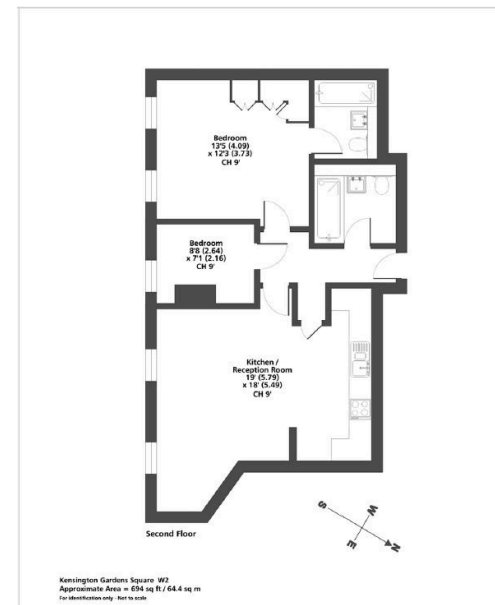
£875,000

🛏️ 2 🚿 1 🚗 1



- Beautifully renovated two-bedroom, two-bathroom apartment
- Approximately 694 sq ft of well-designed internal living space
- Bespoke interiors including natural stone, custom tapestry and made-to-measure furniture
- Access to shared second-floor terrace
- Health Club includes newly refurbished gym, swimming pool, squash court and sauna
- First-floor position within an elegant period building dating back to circa 1876
- Recently refurbished in 2023 with a high-end, design-led finish
- Design input from Clara of the Soho House Creative team
- 24-hour concierge and residents' Health Club
- Excellent location close to Bayswater, Queensway, Westbourne Grove, Notting Hill and Paddington





A beautifully renovated two-bedroom, two-bathroom apartment in the prestigious Kensington Gardens Square. Set within an elegant period building, the property features stylish interiors, modern finishes and smart home features throughout. Residents benefit from a 24-hour concierge, gym, swimming pool, squash court, sauna and shared terrace. Ideally located near Bayswater, Westbourne Grove and Notting Hill, with excellent transport links and easy access to Hyde Park, shops, cafés and restaurants.

