



Picton Place, W1U

£4,200 Per calendar month

A well-presented and modern one bedroom duplex apartment on the second floor of an attractive portered block, moments from Oxford Street.

The open spaces of Hyde Park are within a short walk away and there are fantastic transport links from Bond Street, Oxford Circus and Marble Arch Underground stations.

Features

- Duplex Apartment
- One Double Bedroom
- Large Reception Room
- Semi Open Plan Kitchen
- Ensuite Bathroom & W.C
- Porter & Lift



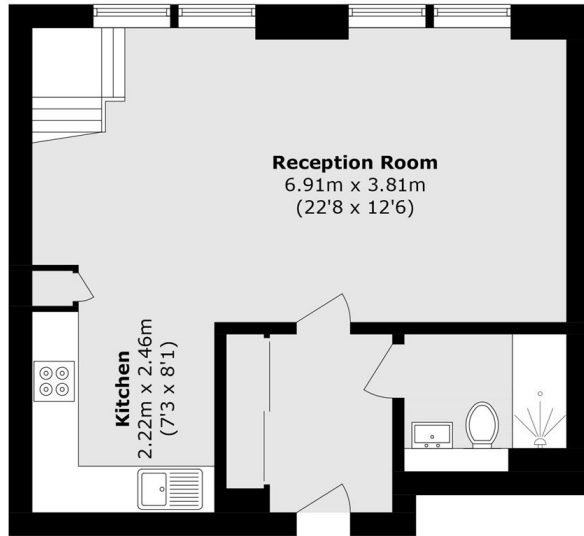
Picton Place, W1U

The property comprises a large reception room with double height ceilings, a modern open-plan kitchen. The upper floor consists of a dressing area with excellent storage, double bedroom and en-suite bathroom.

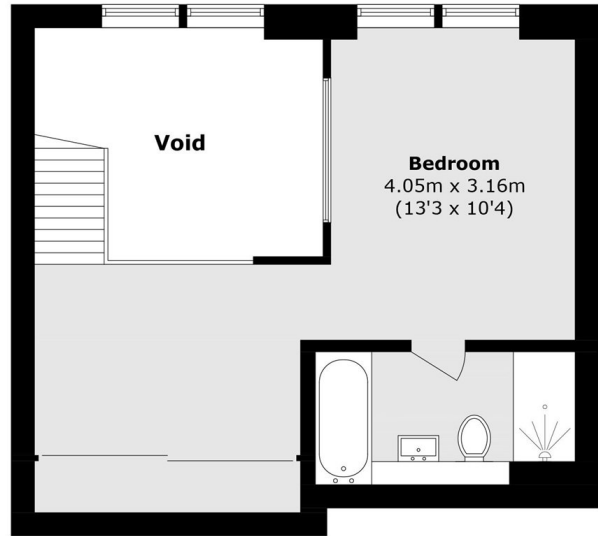
The location is unrivalled, with Selfridges adjacent to Picton Place and the shops, bars and restaurants of St.Christopher's Place on your doorstep.



Picton Place, London, W1U



Second Floor



Mezzanine

Total area (approx.): 72.9 sq. m (784.6 sq. ft)
(Excluding Void)