



Property Features

- Newly Renovated Two-Bedroom Maisonette
- Spacious Accommodation
- Private Ground Floor Entrance
- Large Living and Dining Area
- Fully Furnished
- Modern Kitchen with Appliances
- Two Generous Double Bedrooms
- Easy Access to Transport Links
- EPC Rating D / Council Tax Band C
- Available Now

Full Description

This spacious and newly renovated two-bedroom maisonette is ideally located in the popular village of Prestwood, just a short distance from Great Missenden in the heart of Buckinghamshire.

The property has been refurbished throughout and is offered fully furnished, providing bright and comfortable accommodation ready to move straight into. The maisonette benefits from its own private entrance at ground floor level, with all living accommodation arranged on the first floor, creating a light and airy feel throughout.

Inside, the property features a spacious living and dining area, perfect for relaxing or entertaining, alongside a well-equipped kitchen complete with appliances. There are two generous double bedrooms and a modern bathroom, all finished to a good standard following the recent renovation.

Parking is currently available on the road, with plans for a dedicated car park to be created in the near future, adding further convenience for residents.

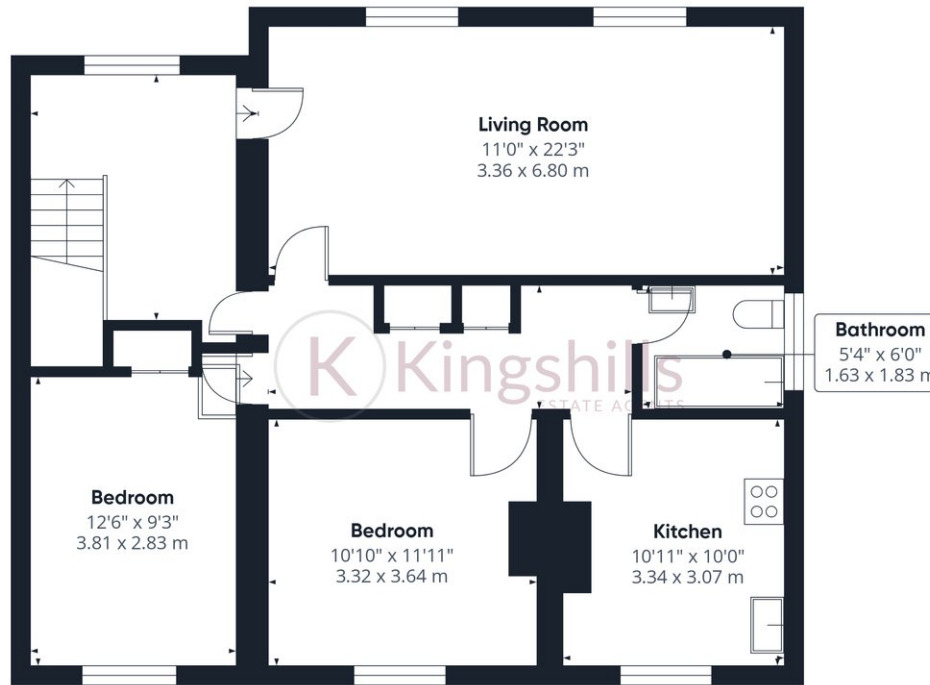
Prestwood is a highly regarded village offering a friendly community atmosphere and a range of everyday amenities including local shops, cafés and green spaces. Nearby Great Missenden provides additional facilities, restaurants and supermarkets, as well as a mainline railway station with services to London, making it ideal for commuters. The surrounding Chiltern Hills also offer beautiful countryside, walking routes and outdoor activities right on the doorstep.

This property would make an ideal home for professionals, couples or small families seeking spacious accommodation in a desirable village location with excellent transport links.





Ground Floor



Floor 1



Approximate total area⁽¹⁾
833 ft²
77.6 m²

(1) Excluding balconies and terraces

Calculations reference the RICS IPMS 3C standard. Measurements are approximate and not to scale. This floor plan is intended for illustration only.

GIRAFFE360