

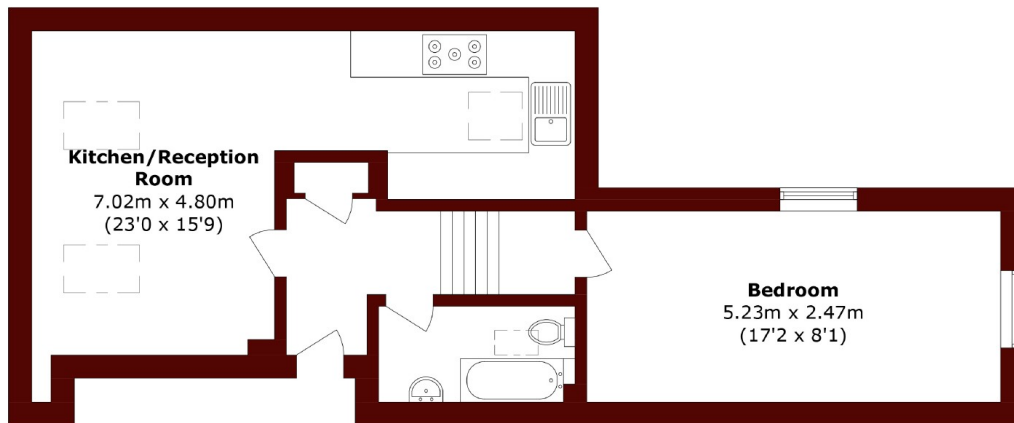


Battersea Rise, SW11

£350,000



- One Bedroom
- Top Floor
- Close To Transport
- Excellent Condition
- Approaching 500 Sq FT
- Bright And Airy



Total area (approx.): 44.7 sq. m (481.1 sq. ft)

Marsh & Parsons Battersea

118 Northcote Road, London,
SW11 6QP
020 8673 4377