



19 Artemus Silvey Close, Great Oldbury, Stonehouse, GL10

£1,325 PCM

- Modern home
- Kitchen with dining area
- Minimum tenancy 12 months
- Three bedrooms
- Generous kitchen with appliances
- Council tax band: C
- En-suite shower room to primary bedroom
- Two allocated parking spaces
- EPC Rating: B

19 Artemus Silvey Close, GL10 3FW

Approximate Gross Internal Area = 76.7 sq m / 825 sq ft

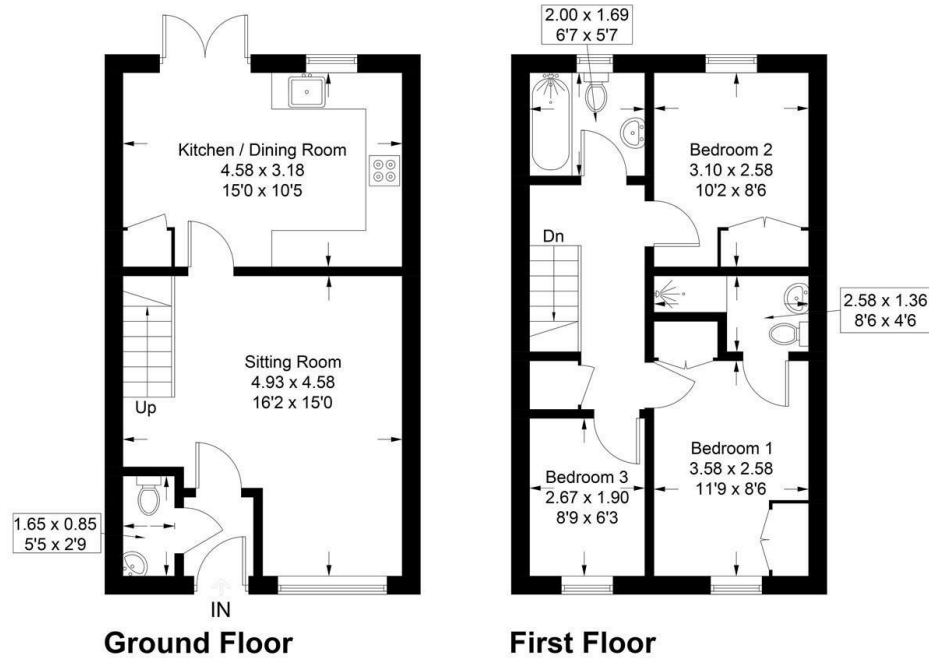


Illustration for identification purposes only, measurements are approximate, not to scale. Fourlabs.co © (ID1229585)



Directions

Viewings

Viewings by arrangement only. Call 01453 833847 to make an appointment.

Council Tax Band

C

EPC Rating:

B

| Energy Efficiency Rating | | Current | Potential |
|---|--|-------------------------|-----------|
| Very energy efficient - lower running costs | | | |
| (92 plus) A | | | 96 |
| (81-91) B | | 84 | |
| (69-80) C | | | |
| (55-68) D | | | |
| (39-54) E | | | |
| (21-38) F | | | |
| (1-20) G | | | |
| Not energy efficient - higher running costs | | | |
| England & Wales | | EU Directive 2002/91/EC | |