

**LANES**

SALES & LETTINGS

*Laura Hughes*  
*Lettings Consultant*

**LANES**

SALES & LETTINGS

*Tel: 01908 508032*

*Email: laura@lanesmk.co.uk*



## 43 Amethyst House, 602 South 5th Street, Central Milton Keynes, Bucks, MK9 2DG

Lanes Rentals are delighted to offer for rent this two bedroom executive apartment within the prestigious vision development adjacent to MK train station (5 min walk) and the business hub.

The property offers views over Central Milton Keynes, in brief: open plan kitchen/living room with white goods, En-Suite to main bedroom, 2nd bedroom, bathroom & balcony. The property also comes with one underground parking space with secure entry.

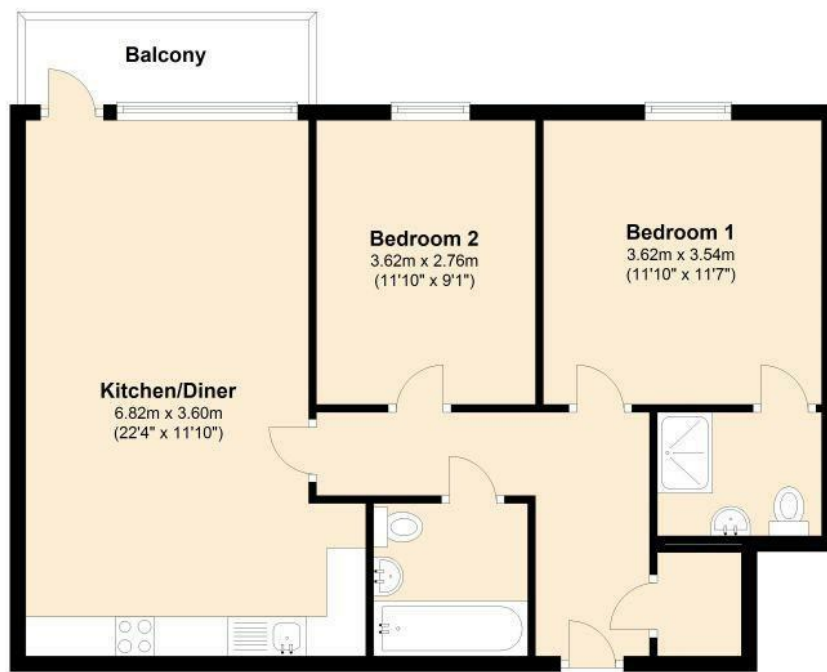
Available Now  
Council Tax Band C.

- Executive Apartment
- Two Bedrooms
- En-Suite
- Balcony
- Central MK
- Underground Secure Parking
- No Admin Fees
- Available Now
- Council Tax Band C

**£1,400 PCM**

43 Amethyst House, 602 South 5th Street, Central Milton Keynes, Bucks, MK9 2DG  
 14355967  
 £1,400 PCM

### Ground Floor



### Ground Floor



Energy Efficiency Rating		Current	Potential
Very energy efficient - lower running costs			
(92 plus) A			
(81-91) B			
(69-80) C			
(55-68) D			
(39-54) E			
(21-38) F			
(1-20) G			
Not energy efficient - higher running costs			
England & Wales		84	85
EU Directive 2002/91/EC			

Environmental Impact (CO <sub>2</sub> ) Rating		Current	Potential
Very environmentally friendly - lower CO <sub>2</sub> emissions			
(92 plus) A			
(81-91) B			
(69-80) C			
(55-68) D			
(39-54) E			
(21-38) F			
(1-20) G			
Not environmentally friendly - higher CO <sub>2</sub> emissions			
England & Wales		85	86
EU Directive 2002/91/EC			