



Ashdale

Bishop's Stortford, CM23 4EA



£1,600 PCM (per calendar month)
Holding Deposit equal to 1 weeks rent
Tenancy Deposit equal to 5 weeks rent
Council Tax Band: D

Available from the 1st June 2026 is this three bedroom end of terrace home, The accommodation includes entrance hall, kitchen, lounge/diner, three bedrooms and bathroom. Externally there is parking and a sizable side/rear garden.



Entrance Hall

Entrance door, stairs to first floor, radiator, carpet.

Kitchen

8'10 x 6'6 (2.69m x 1.98m)

Double glazed window to front, wall and base units, stainless steel single drainer sink, gas cooker point, boiler, part tiled walls, tiled flooring.

Lounge/Diner

15'9 x 13'1 (4.80m x 3.99m)

Double glazed patio doors and window to rear, radiator, carpet.

Landing

Loft access, cupboard, carpet.

Bedroom One

9'10 x 8'8 (3.00m x 2.64m)

Double glazed window to front, cupboard, radiator, carpet.

Bedroom Two

9'7 x 7'1 (2.92m x 2.16m)

Double glazed window to rear, radiator, carpet.

Bedroom Three

9'6 x 5'9 (2.90m x 1.75m)

Double glazed window to rear, radiator, carpet.

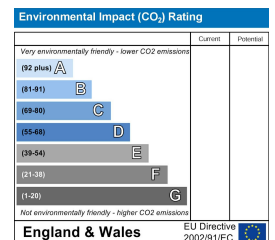
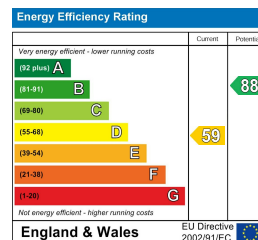
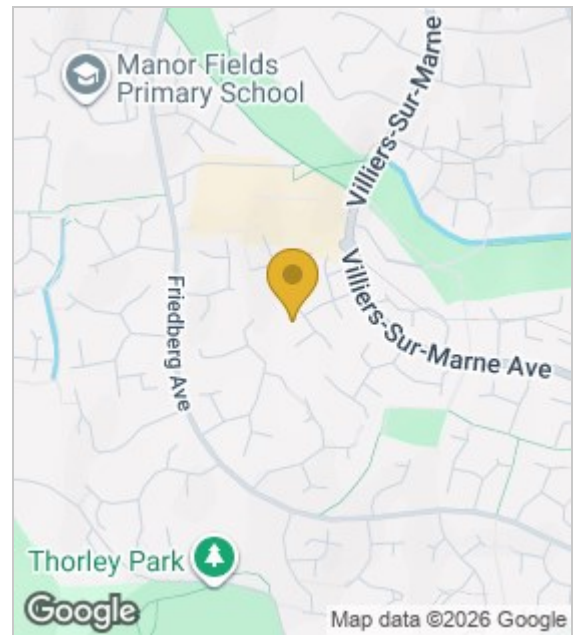
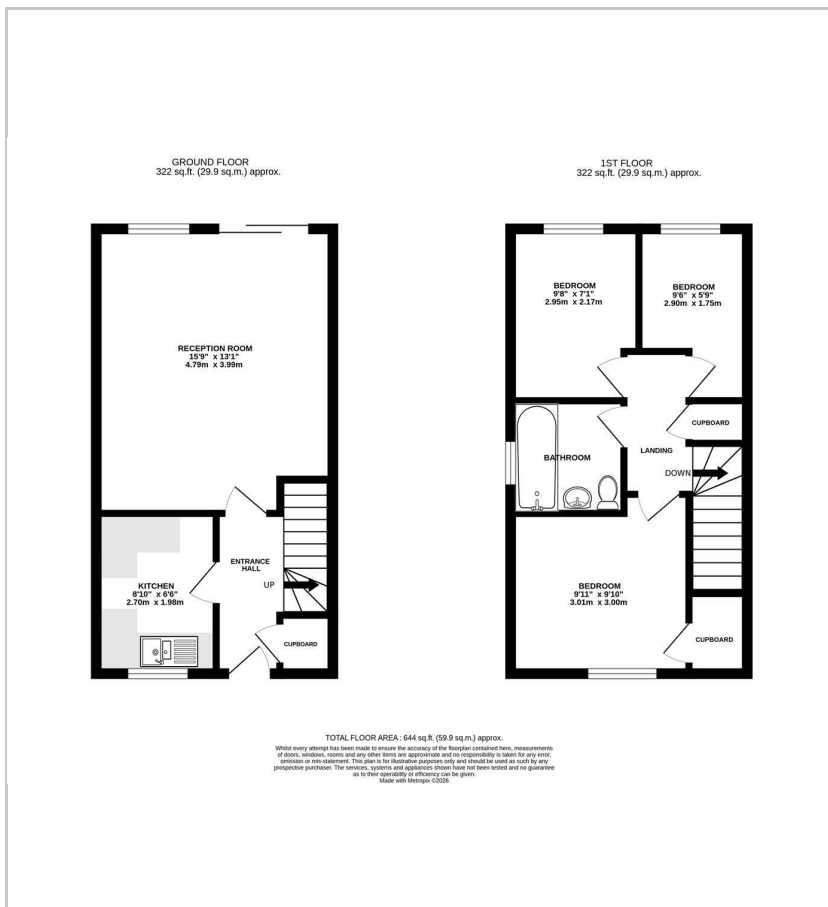
Bathroom

Frosted double glazed window to side, low level WC, pedestal wash hand basin, panelled bath, radiator, part tiled walls, vinyl flooring.

Parking

Parking to front.

Garden



These particulars, whilst believed to be accurate are set out as a general outline only for guidance and do not constitute any part of an offer or contract. Intending purchasers should not rely on them as statements of representation of fact, but must satisfy themselves by inspection or otherwise as to their accuracy. No person in this firm's employment has the authority to make or give any representation or warranty in respect of the property.