



## 316 Stockton Road

, Hartlepool, TS25 2PG

**£320,000**



Igomove take enormous pleasure in presenting to the market this absolutely beautiful three bedroom detached chalet detached bungalow which has been modernised, extended and enhanced in every regard, it provides a host of key desirable elements which include three fabulous bedrooms (master with ensuite facilities), contemporary kitchen, large utility room, four piece family bathroom, inviting entrance hallway, large rear aspect family room, anthracite UPVC double Glazing, gas central heating, well stocked gardens, 3/4 car driveway, impeccable decor, upgraded fixtures and fittings, luxury LVT flooring to the downstairs, fitted blinds, oak interior doors, freehold.



Rendered facade, anthracite windows, well stocked walled lawn garden, driveway, front door to vestibule which leads into;

Large entrance hallway with turned bespoke oak and glass stairs to the first floor accommodation and under stairs fitted storage cupboard, additional large fitted storage cupboard, LVT flooring, immaculate decor.

Bedroom two, which is a sizable double room with bay window to the front of the property, stylish decor, LVT flooring.

Bedroom three is to the front of the property with bay window, LVT flooring, custom wall panelling, and pastel decor.

Family bathroom comprising oversized shower enclosure, bath, concealed cistern WC, and vanity wash basin, complementary tiling, LVT flooring, column radiator.

Fabulous kitchen fitted with an array of sleek larder, wall, base, and drawer cabinetry, complementary solid marble surfaces, subway tiled backsplash, integrated oven, integrated microwave, integrated ceramic hob, space for fridge freezer, sink with chrome mixer tap, Integrated dishwasher, huge central breakfasting island, recessed spotlights, LVT flooring.

Useful utility room with plumbing for washing machine, space for tumble dryer, sleek fitted wall and larder cabinets, marble surfaces, subway tiled backsplash, glazed exterior access door.

Capacious family/dining/sitting room with media wall, wall lights, recessed spotlights, custom wall panelling, anthracite column radiators, LVT flooring, dual fuel cast fire, impeccable decor, doors opening into the rear garden.

To the first floor;

Huge master double bedroom situated to the rear of the property with bespoke panelling, beautiful decor, extensive fitted sliding mirrored wardrobes, rested spotlights, Velux window, laminate flooring, also with access to;

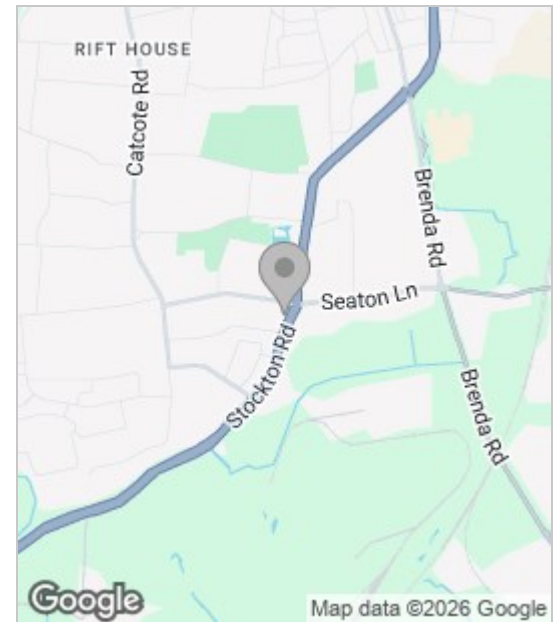
Ensuite shower room comprising oversized shower enclosure, concealed cistern WC and vanity wash basin with stylish tiling, laminate flooring, Velux windows.

Study/dressing room with extensive eaves storage, pristine decor, laminate flooring.

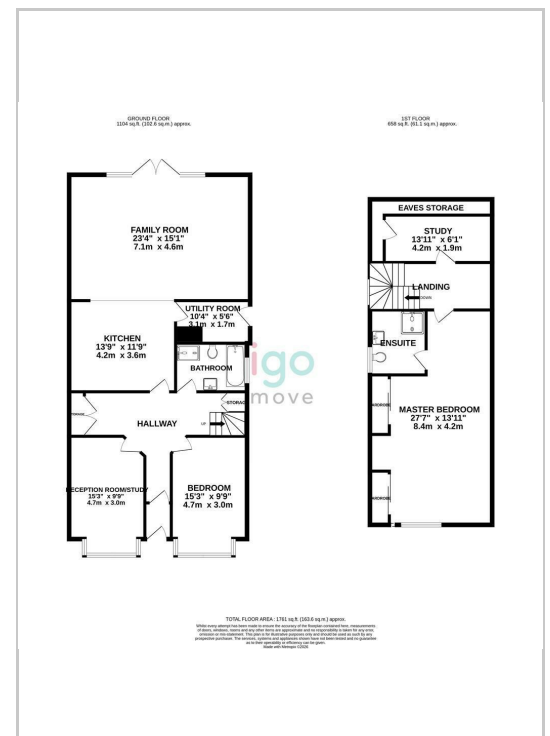
To the rear an enclosed, well stocked South-westerly facing garden laid to lawn with large patio area, a multitude of established shrubbery and trees, garden shed.

This extended, impeccably presented residence is of a type rarely available, contact Igomove in the first instance to arrange your viewing.

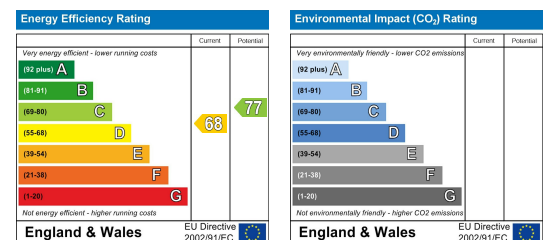
## Area Map



## Floor Plan



## Energy Efficiency Graph



These particulars, whilst believed to be accurate are set out as a general outline only for guidance and do not constitute any part of an offer or contract. Intending purchasers should not rely on them as statements of representation of fact, but must satisfy themselves by inspection or otherwise as to their accuracy. No person in this firm's employment has the authority to make or give any representation or warranty in respect of the property.