



Cobbett Court, Highworth, SN6 7AE

£159,950
(Leasehold)

Hanley's

Cobbett Court Highworth SN6 7AE

A well presented two bedroom ground floor retirement apartment set within this sought after development just a short level walk from the High Street and Market Place. The spacious accommodation comprises: Entrance hall with built in airing/storage cupboard, living room/dining room with feature fireplace and French doors opening onto the patio area which over looks the communal gardens, fitted kitchen with built-in appliances, bedroom one with built-in double wardrobe, second bedroom and bathroom with shower over the bath. Further benefits include new carpets, night storage heating, an elegant residents lounge, laundry room and communal gardens. The property is offered for sale with no onward chain..

Leasehold property. A lease of 125 years was granted from 2007. There is a management charge of £2348.48 and ground rent of £247.50 both are payable every six months. (March and August)



1 Bathroom



2 Bedrooms



1 Reception

EPC: TBA

Council Tax Band: C

Tenure: Leasehold

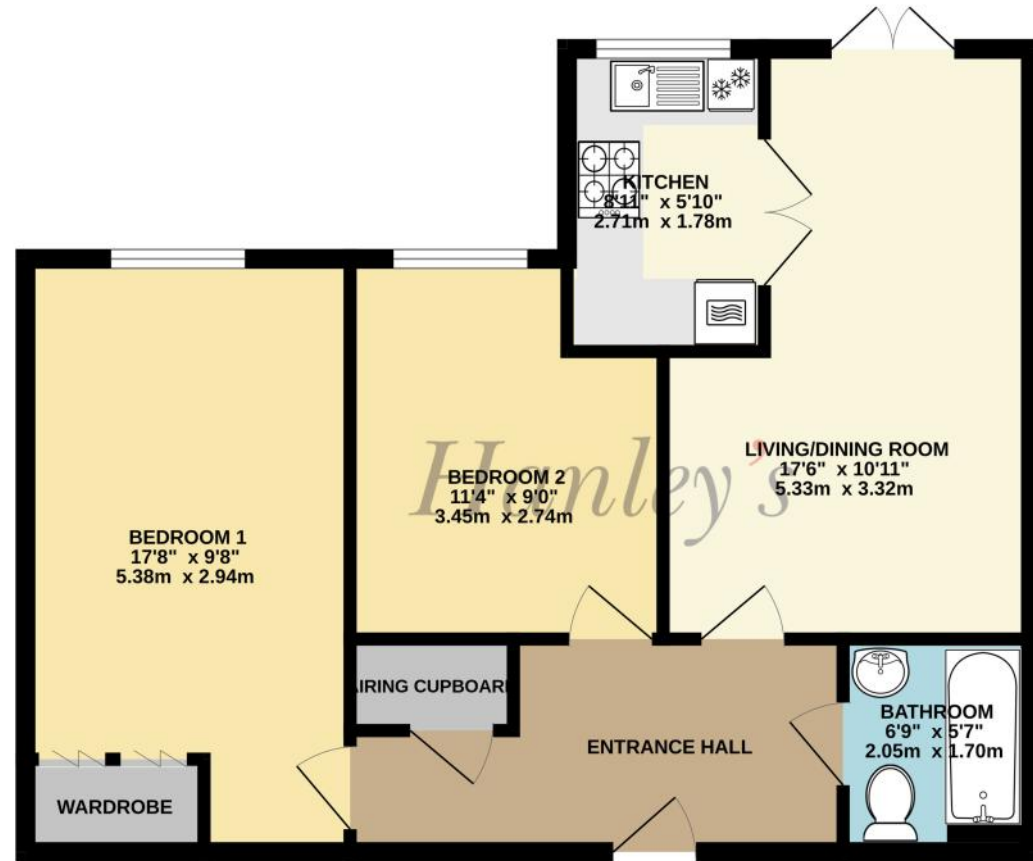


DISCLAIMER. These particulars, whilst believed to be accurate are set out as a general outline for guidance and do not constitute any part of an offer or contract. Intending purchasers should not rely on them as statements or representation of fact, but must satisfy themselves by inspection or otherwise as to their accuracy. No person in this firm's employment has the authority to make or give any representation or warranty in respect of the property. Floor plan measurements and distances are approximate only. We have not carried out a detailed survey nor tested the services, appliances or specific fittings. Your home is at risk if you do not keep up repayments on a mortgage or other loan secured on it.





GROUND FLOOR
612 sq.ft. (56.8 sq.m.) approx.



TOTAL FLOOR AREA : 612 sq.ft. (56.8 sq.m.) approx.
Whilst every attempt has been made to ensure the accuracy of the floorplan contained here, measurements of doors, windows, rooms and any other items are approximate and no responsibility is taken for any error, omission or mis-statement. This plan is for illustrative purposes only and should be used as such by any prospective purchaser. The services, systems and appliances shown have not been tested and no guarantee as to their operability or efficiency can be given.
Made with Metropix ©2026