

Frank Harris & Co.



Middle Street, London, EC1A

£585,000

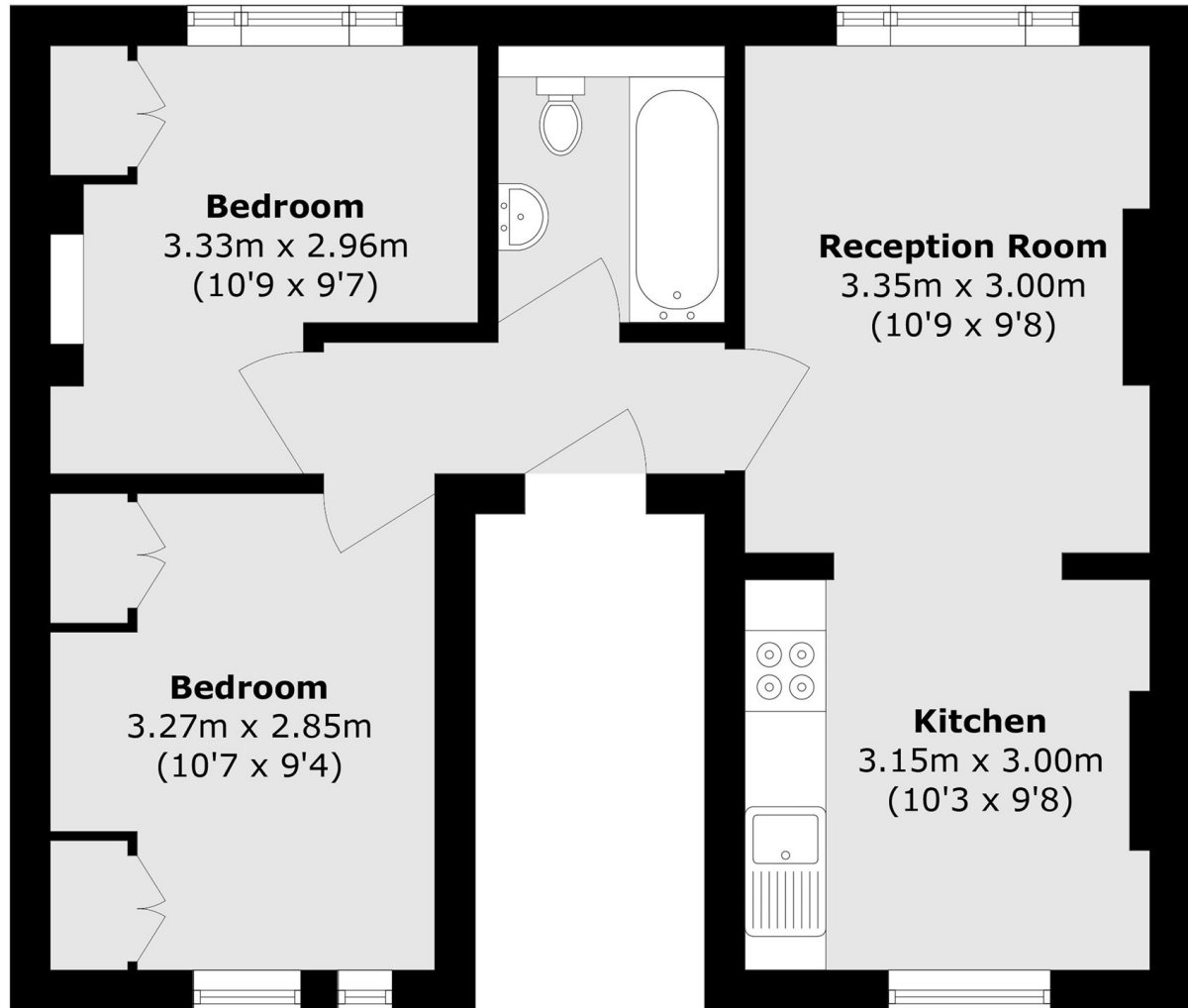
Nestled in a quiet street in the heart of the City of London is this charming two bedroom flat, with a dual aspect and large windows. There is an open plan kitchen to the reception room, two double bedrooms and a separate bathroom.

The location benefits from superb transport links, with Barbican, Farringdon and St Paul's stations all being close by. Thameslink services from Farringdon give direct access to Gatwick and Luton airports, and the Elizabeth line direct, fast access to Canary Wharf, Heathrow and Bond Street.

- Two Bedroom Flat • Long Lease • Chain Free •
- Low Service Charge • Convenient Transport Links • First Floor •

Frank Harris

& Co.



Total area (approx.): 47.4 sq. m (510.2 sq. ft)

Frank Harris & Co. Barbican and City
87 Long Lane, London,
EC1A 9ET
020 7600 7000
citysales@frankharris.co.uk

Energy Rating: C. We aim to make our particulars both accurate and reliable. However they are not guaranteed; nor do they form part of an offer or contract. If you require clarification on any points then please contact us, especially if you're traveling some distance to view. Please note that appliances and heating systems have not been tested and therefore no warranties can be given as to their good working order.

