

**Shaw
& Co**
ESTATE
AGENTS

£280,000

Riverside Court, Woodlands

leleworth, TW7 6NX

**Shaw
& Co**

PROPERTY SUMMARY

Two bedroom ground floor apartment, located on a sought after and popular residential road in Isleworth, a short walk from Isleworth Railway Station. The property consist of reception room, kitchen, bathroom and two well proportioned bedrooms. The property further benefits from a security entry phone system and is available to the market with no onward chain.

Woodlands Road is a sought after location in Isleworth and is ideally positioned with easy access to Isleworth Mainline Station with regular train services to London Waterloo. Neighbouring areas of St. Margaret's and Richmond are close by, in addition to a vast array of nearby shops, cafés and restaurants.

Tenure: Leasehold 84
Annual Ground Rent: £40
Annual Service Charge: £1032

2



1



1



Shaw
& Co



Shaw
& Co

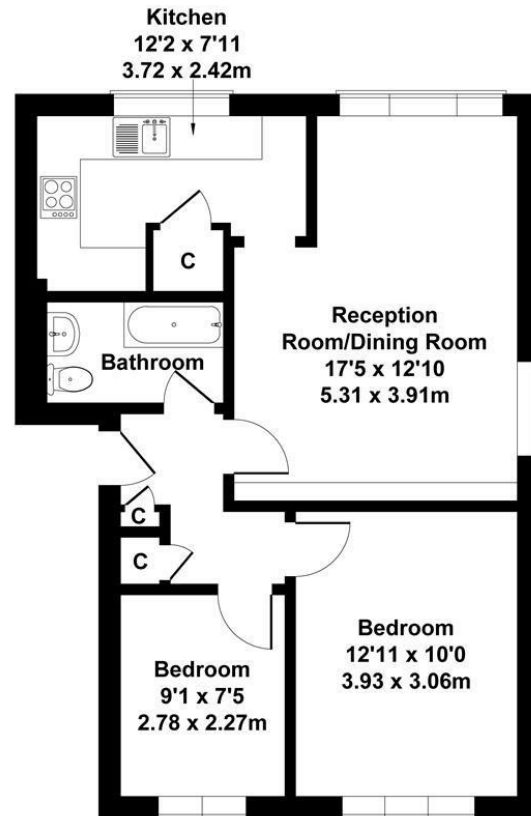


Shaw
& Co



Riverside Court, Woodlands Road, Isleworth

Approximate Gross Internal Area
603 sq ft - 56 sq m



GROUND FLOOR

Not to Scale. Produced by The Plan Portal 2025
For Illustrative Purposes Only.



LOCAL AUTHORITY

Hounslow Council

TENURE

Leasehold

COUNCIL TAX BAND

C

VIEWINGS

By prior appointment only

Energy Efficiency Rating		Current	Potential
Very energy efficient - lower running costs			
(92 plus) A			
(81-91) B			
(69-80) C			74
(55-68) D			
(39-54) E		43	
(21-38) F			
(1-20) G			
Not energy efficient - higher running costs			
England & Wales		EU Directive 2002/91/EC	



Agents Note: Whilst every care has been taken to prepare these particulars, they are for guidance purposes only. All measurements are approximate and are for general guidance purposes only and whilst every care has been taken to ensure their accuracy, they should not be relied upon and potential buyers/tenants are advised to recheck the measurements

**Shaw
& Co**
ESTATE
AGENTS

OFFICE ADDRESS
10 Central Parade
New Heston Road
Heston
Middlesex
TW5 0LJ

OFFICE DETAILS
0208 570 7258
heston@shawandcoestates.com