


PROMINENCE
ESTATES



RESIDENTIAL
PROPERTY EXPERTS

COVENTRY, WARWICKSHIRE
& LEAMINGTON SPA



THE GLADE,
TILE HILL, COVENTRY, CV5 7BU

£1,250 PCM

THE GLADE



PROMINENCE
ESTATES

Situated in the popular Tile Hill area of Coventry, this recently refurbished three-bedroom semi-detached home offers spacious and well-presented accommodation, making it an ideal choice for families and professionals alike.

The property has been updated throughout and features a large open-plan kitchen diner, providing an excellent space for both everyday living and entertaining. The bright and spacious lounge benefits from plenty of natural light, creating a welcoming atmosphere.

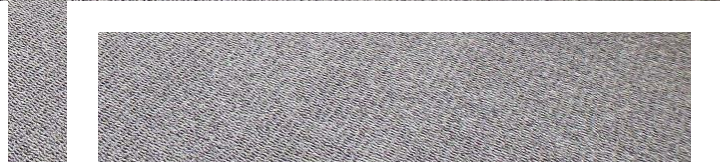
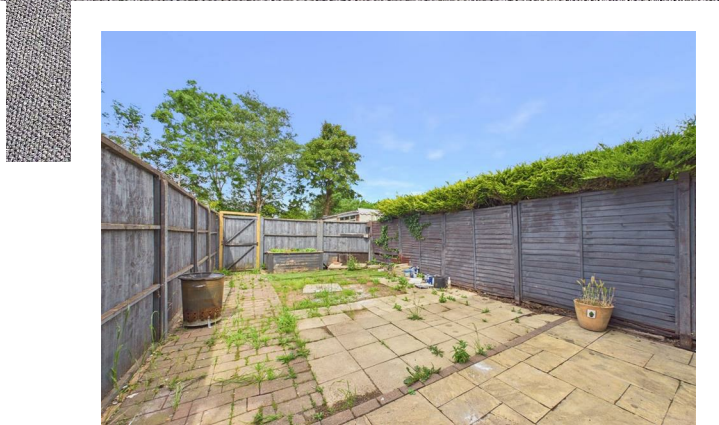
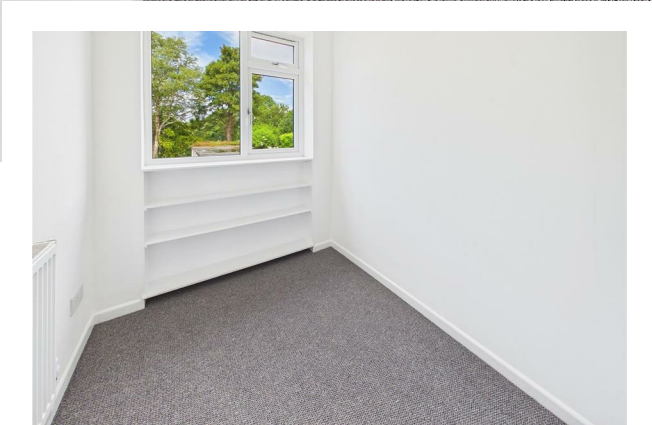
Upstairs, there are two generously sized double bedrooms together with a third bedroom which would be ideal as a home office, nursery or single bedroom. The family bathroom is well presented and complements the modern finish found throughout the property.

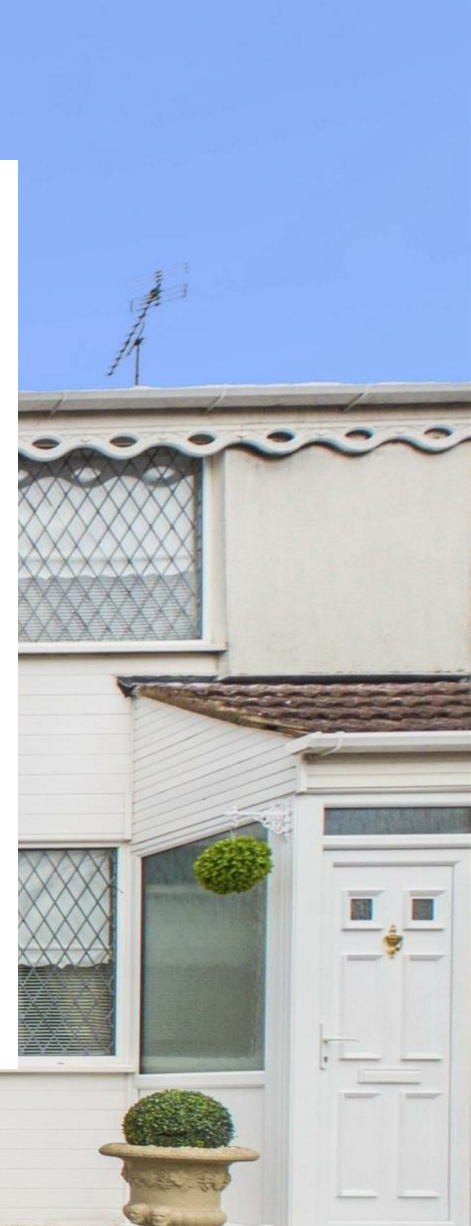
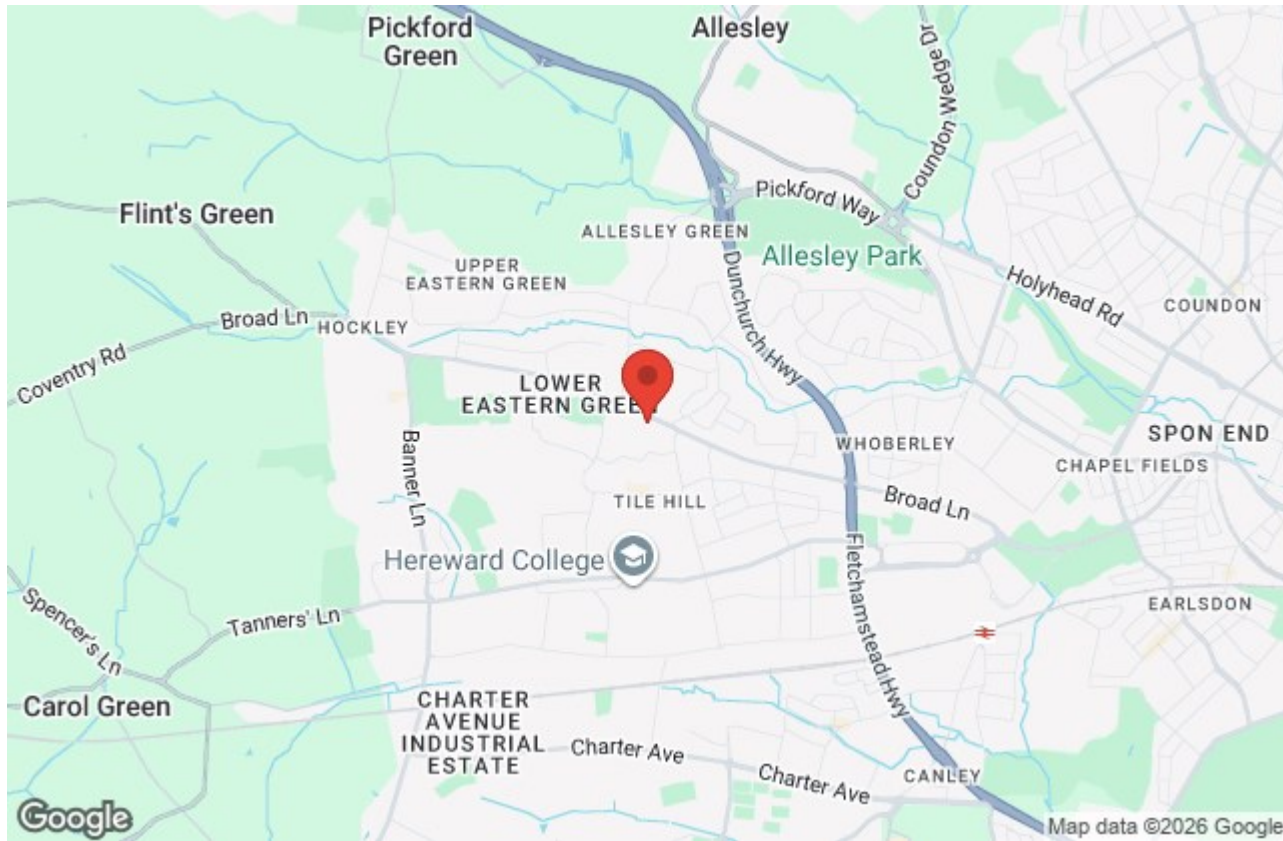
Externally, the home benefits from a low-maintenance rear garden, perfect for those seeking outdoor space without the upkeep, along with a garage located to the rear providing additional storage or secure parking.

The property is conveniently located close to a range of local amenities including Tile Hill Village, shops, supermarkets and transport links. Well-regarded local schools nearby include Limbrick Wood Primary School, St John Vianney Catholic Primary School and West Coventry Academy, making this an excellent location for families.

Early viewing is highly recommended to appreciate the quality and space this home has to offer.







Prominence Estates
5 Queen Isabels Avenue,
Cheylesmore,
Coventry,
CV3 5GE

02476 309 826
lettings@prominenceestates.com
www.prominenceestates.com


PROMINENCE
ESTATES