



**CHAIN FREE STYLISH & MODERN TWO BEDROOM SEMI-DETACHED BUNGALOW**

Coniston Gardens, Pinner, Middlesex, HA5 2JJ

**ROBSONS**

Coniston Gardens, Pinner, Middlesex, HA5 2JJ

**DINING/RECEPTION ROOM/KITCHEN •  
UTILITY ROOM • SHOWER ROOM •  
PRINCIPAL BEDROOM WITH EN-SUITE •  
FURTHER GROUND FLOOR BEDROOM •  
ATTRACTIVE REAR GARDEN • CHAIN FREE**  
**Description**

This charming two-bedroom bungalow offers stylish and versatile living, complemented by an attractive rear garden. Ideally situated within easy reach of local amenities, transport links, and well-regarded schools, the property is perfectly suited to a range of buyers.

Upon entering, a welcoming hallway leads to a front-aspect bedroom featuring a beautiful bay window. This flexible space could equally serve as a cosy lounge or a practical home office. The heart of the home is the impressive open-plan reception, dining, and modern kitchen area, flooded with natural light from a large skylight. Bi-fold doors open seamlessly onto the rear garden, creating an ideal setting for both relaxing and entertaining.

The ground floor is further enhanced by a contemporary shower room and a useful utility room.





Upstairs, the property boasts a spacious principal bedroom complete with fitted wardrobes and a stylish en-suite shower room.

Externally, the rear garden is thoughtfully landscaped, featuring a well-maintained lawn, mature shrubs, and flowerbeds, alongside a patio area perfect for outdoor dining. A garden shed provides additional storage. To the front, there is a small garden and convenient side access leading to the rear.

### **Location**

Positioned between Fore Street and Wentworth Drive, this property is just a short distance from Northwood Hills high street as well as Eastcote and Pinner, all of which offer a variety of shopping facilities, restaurants, coffee houses and popular supermarkets. For commuters, nearby Northwood Hills station provides a frequent service into London via the Metropolitan, with there being easy access to local bus routes. The area is well served by primary and secondary schooling with Coteford Junior School within walking distance. There are plenty of local parks and open spaces for you to enjoy, with Salisbury Road Playing Field just a stone's throw away.

### **Additional Information**

Tenure: Freehold

Local Authority: London Borough of Hillingdon

Council Tax Band: E

Energy Efficiency Rating: TBC

For additional information, please refer to [www.robsonswb.com](http://www.robsonswb.com) or call us on: 01923 777762.



Approximate Gross Internal Area  
Ground Floor = 64.2 sq m / 691 sq ft  
First Floor = 33.9 sq m / 365 sq ft  
Shed = 14.1 sq m / 152 sq ft  
Total = 112.2 sq m / 1,208 sq ft

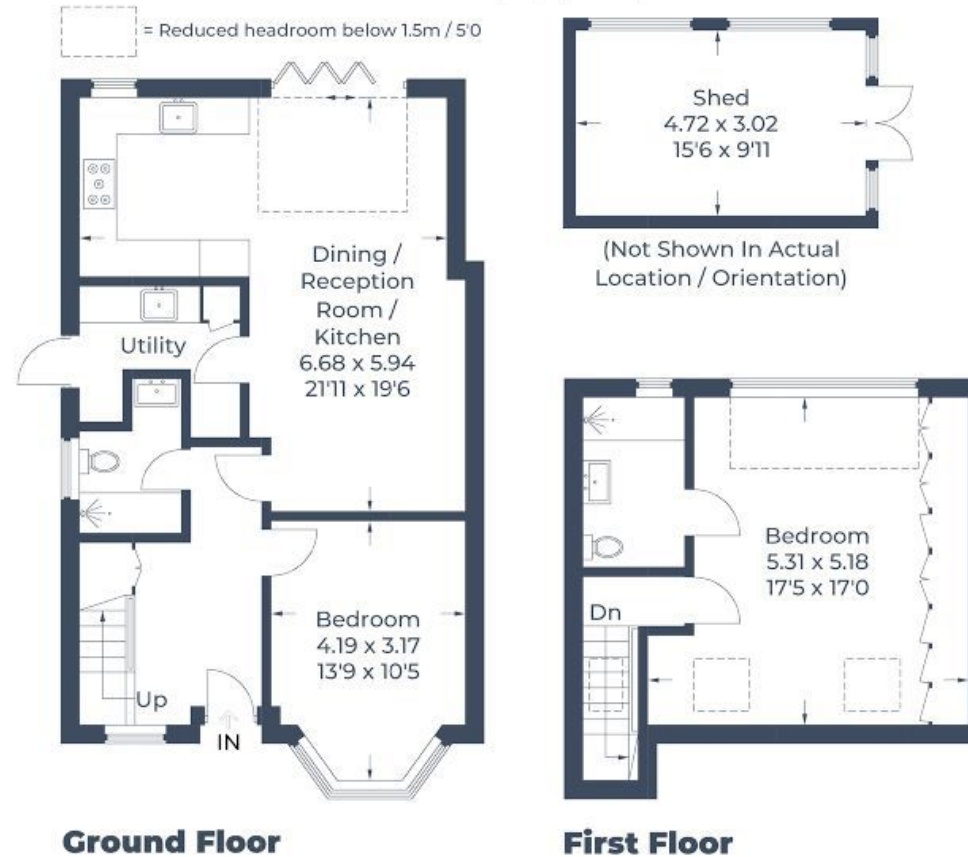


Illustration for identification purposes only,  
measurements are approximate, not to scale.  
© CJ Property Marketing Produced for Robsons

**ROBSONS**

130 High Street, Rickmansworth WD3 1AB  
Tel: 01923 777762 Email: rickmansworth@robsonsweb.com  
[www.robsonsweb.com](http://www.robsonsweb.com)

SCAN TO VISIT



OUR WEBSITE

Important notice: Robsons, their clients and any joint agents give notice that 1: They are not authorised to make or give any representations or warranties in relation to the property either here or elsewhere, either on their own behalf or on behalf of their client or otherwise. They assume no responsibility for any statement that may be made in these particulars. These particulars do not form part of any offer or contract and must not be relied upon as statements or representations of fact. 2: Any areas, measurements or distances are approximate. Plot sizes and dimensions are taken from Promap and are approximate. The text, photographs and plans are for guidance only and are not necessarily comprehensive. It should not be assumed that the property has all necessary planning, building regulation or other consents and Robsons have not tested any services, equipment or facilities. Purchasers must satisfy themselves by inspection or otherwise.