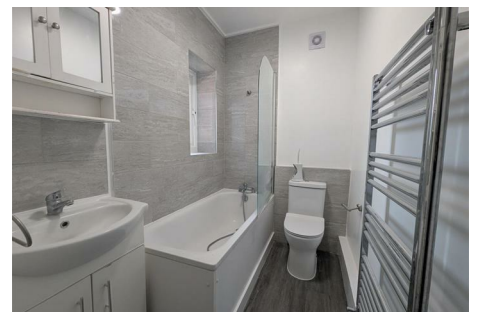
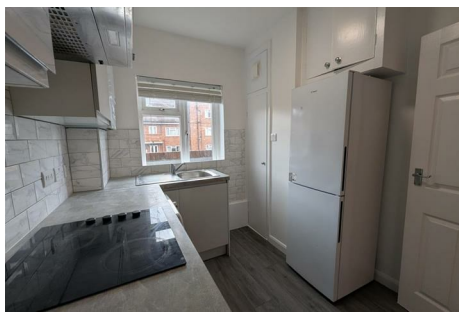


RAINBOW REID



ESTATE AGENTS || LETTING AGENTS || PROPERTY MANAGEMENT



15 Empire Court North End Road , Wembley, HA9 0AG

Located just a short walk from Wembley Park Underground station is this well presented two bedroom second floor apartment which is available to move in to immediately.

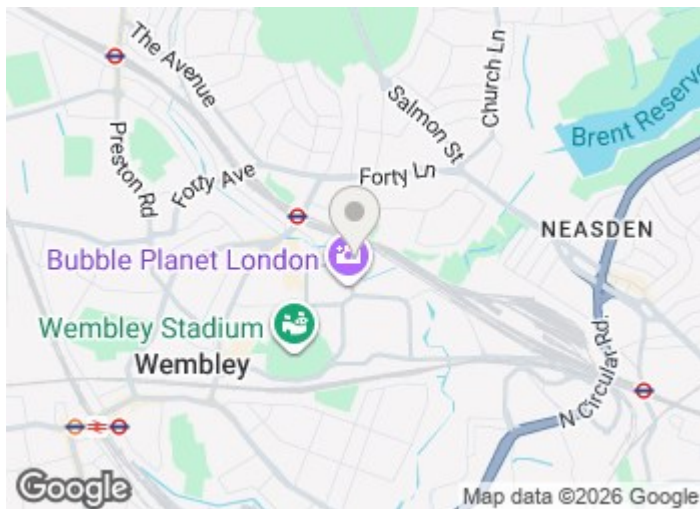
The property in full comprises: spacious living/dining, two bedrooms with access to a balcony off of bedroom two, modern kitchen and bathroom.

The property would make a great home for professionals, couples or young families, call now to view.

Council tax band B

£1,600 Per Month

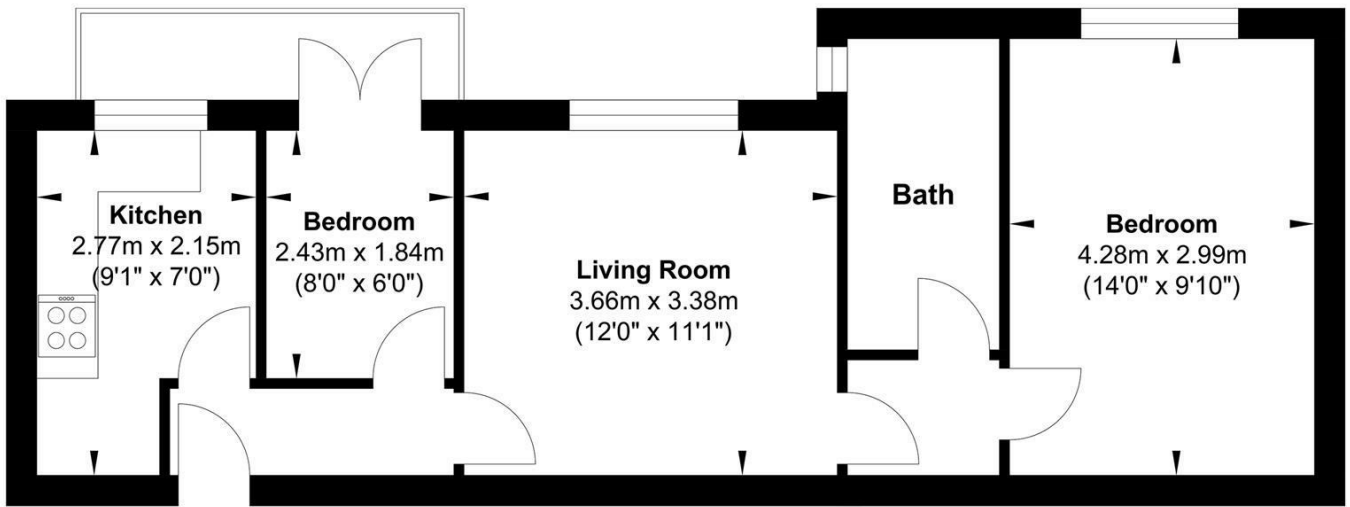
15 Empire Court North End Road , Wembley, HA9 0AG



Directions



Floor Plan



Gross Internal Floor Area : 46.47 m2 ... 500.19 ft2

Whilst every attempt has been made to ensure the accuracy of the floor plan contained here, measurements of doors, windows, rooms and any other items are approximate and no responsibility is taken for any error, omission, or mis-statement. This plan is for illustrative purposes only and should be used as such by any prospective purchaser. The services, systems and appliances shown have not been tested and no guarantee as to their operability or efficiency can be given.

These particulars, whilst believed to be accurate are set out as a general outline only for guidance and do not constitute any part of an offer or contract. Intending purchasers should not rely on them as statements of representation of fact, but must satisfy themselves by inspection or otherwise as to their accuracy. No person in this firm's employment has the authority to make or give any representation or warranty in respect of the property.

