



35, CHARLES PLACE, GREENOCK, PA15  
1RJ









## Description

\*Closing date on Friday 6th February at 11am\*

Occupying a rarely available location next to the Oak Mall shopping centre this spacious two bedroom THIRD FLOOR FLAT with lift or stair access. Limited shared gated resident's car parking is available adjacent to the Oak Mall shopping centre with access from High Street. A path leads from the car park to rear entrance door located on the first floor of Charles Place.

The central location of this home means it is conveniently located for a range of shops, amenities and transport facilities are located nearby. Specification includes: double glazing and partial gas central heating. The building is protected by a security door entry system. A bin store is located on the 1st floor next to entrance to the car park.

Accommodation comprises: Entrance Hallway by timber door with two single and one double inbuilt storage cupboards. The front facing Lounge is a bright apartment with two double storage cupboards and two front facing windows. The fitted Dining Kitchen can be accessed from either the hall or the lounge. There are light oak style fitted units and high gloss pearlescent work surface areas. Appliances include: electric hob, oven, washing machine and fridge/freezer. There is ample space for a dining table and chairs.

There are two front facing double sized Bedrooms. The 1st bedroom benefits from maple style fitted wardrobes and beside cabinets. The Bathroom offers a three piece suite comprising: pedestal wash hand basin, wc and bath with "Mira" shower. There is wall and floor tiling, plus a decorative panelled ceiling with downlighters.

Viewing is recommended for this seldom available opportunity to purchase a home in this town centre location with lift access. EPC = C



## Measurements

Hallway

Lounge

4.67m x 5.21m (15'4 x 17'1)

Dining Kitchen

3.02m x 4.06m (9'11 x 13'4)

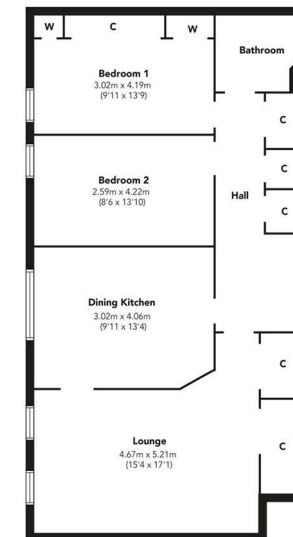
Bedroom 1

3.02m x 4.19m (9'11 x 13'9)

Bedroom 2

2.59m x 4.22m (8'6 x 13'10)

Bathroom



Floorplans are indicative only - not to scale  
Produced by Plushplans







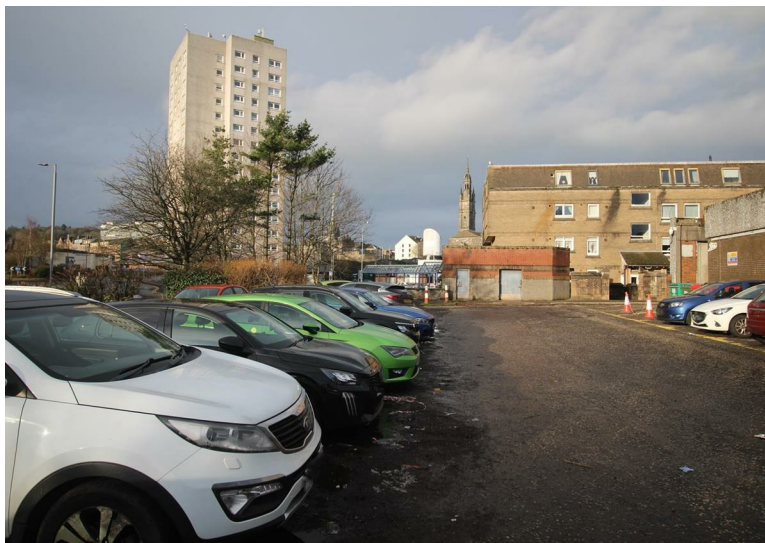












**Agents Notes:**

These sales particulars are set out as a general outline only, issued in good faith, but do not constitute representations of fact and do not form part of any offer or contract. Any services, equipment, appliances, fittings or central heating systems have not been tested and no warranty is given or implied that these are in working order. All measurements are approximate and for guidance only.

Neither Neill Clerk Estate Agents nor any of its employees or agents has any authority to make or give any representation or warranty whatever in relation to this property.

Find all our properties at: [rightmove](#) [Zoopla](#) [onTheMarket.com](#) [s1homes.com](#)

The  
next  
step..



To view call 01475 888400. Speak to us 7 days a week until 11pm every day to book your viewing appointment.

**House to sell or rent?**

Call 01475 888400 to book your free market appraisal.

**Require a solicitor?**

Ask us to supply a free legal quotation from Neill Clerk & Murray, Solicitors.  
[www.neillclerkmurray.co.uk](http://www.neillclerkmurray.co.uk)

Stay fully up-to-date by following Neill Clerk on:



**60 West Blackhall Street  
Greenock  
Renfrewshire  
PA15 1UY**

**t: 01475 888400**

**e: [sales@neillclerk.co.uk](mailto:sales@neillclerk.co.uk)**

**w: [www.neillclerk.co.uk](http://www.neillclerk.co.uk)**

