



Corrigan Court, W5

This exceptional two-bedroom, two-bathroom apartment is situated in the heart of Ealing Common, just moments from the station, and spans an impressive 952 square feet. The property boasts a stunning open-plan reception measuring 34'11" by 11'8", providing a dynamic and versatile living space, complemented by allocated secure underground parking.

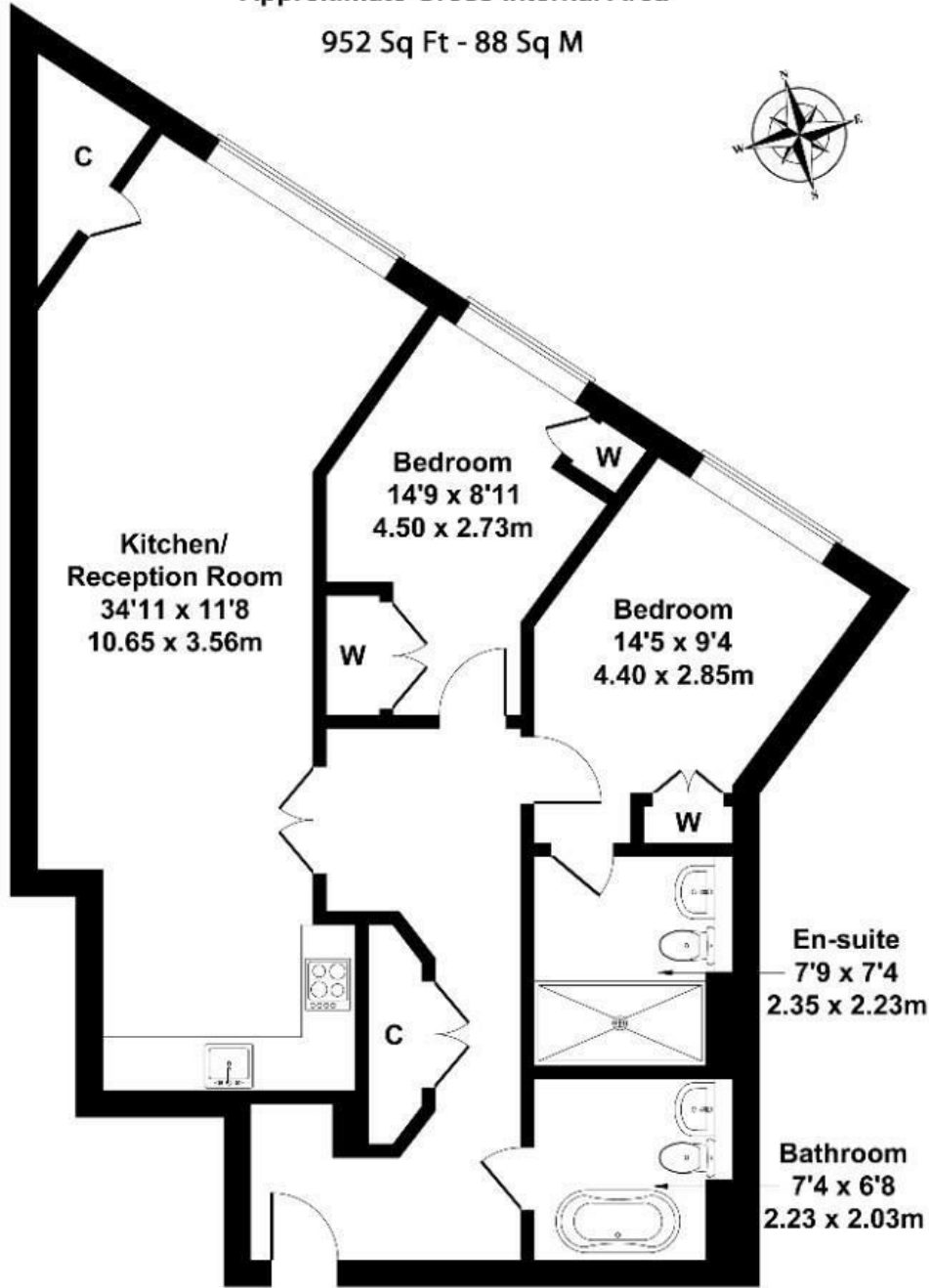
Corrigan Court, built approximately 17 years ago, exemplifies modern, sleek design with expansive windows and thoughtful attention to contemporary living needs. The apartment which has recently undergone refurbishment is stylishly presented throughout, featuring high-quality fixtures and fittings, while offering generous space for both living and entertaining.

£585,000

Corrigan Court

Approximate Gross Internal Area

952 Sq Ft - 88 Sq M



SECOND FLOOR

Not to Scale. Produced by The Plan Portal 2026
For Illustrative Purposes Only.

Energy Efficiency Rating		
	Current	Potential
<i>Very energy efficient - lower running costs</i>		
(92 plus) A		
(81-91) B		
(69-80) C		
(55-68) D		
(39-54) E		
(21-38) F		
(1-20) G		
<i>Not energy efficient - higher running costs</i>		
England & Wales	EU Directive 2002/91/EC	