



Kings Terrace

Camden, NW1

Asking Price £775,000

A stylish two double bedroom apartment on the 2nd floor of a modern, purpose built block, situated on a cobbled mews in the heart of Camden.

The apartment offers lateral accommodation with generously proportioned rooms, particularly the large reception room and open plan kitchen. There are two double bedrooms, including a principal bedroom with an en-suite bathroom, alongside a further family bathroom.

Further benefits include built in wardrobes in both bedrooms and an additional storage cupboard.



Kings Terrace

Camden, NW1

- Excellent Location
- Lateral Living
- Two Double Bedrooms
- Ample Storage Throughout
- Great Condition



Kings Terrace is a quiet cobbled street positioned behind Camden High Street and is an ideal location to take advantage of the local amenities. These include excellent transport links such as Camden Underground Station, Mornington Crescent and Camden Road (Overground) and a superb array of shops/restaurants. The green open spaces of Regent's Park are also a short walk away.

Tenure: Leasehold (109 years remaining)

Service Charge: £3484 p.a

Ground Rent: £350 p.a

Local Authority: Camden

Council Tax Band: E

Score	Energy rating	Current	Potential
92+	A		
81-91	B	84 B	84 B
69-80	C		
55-68	D		
39-54	E		
21-38	F		
1-20	G		

Chestertons Camden & Kentish Town Sales

99-101 Parkway

Camden

London

NW1 7PP

camden@chestertons.co.uk

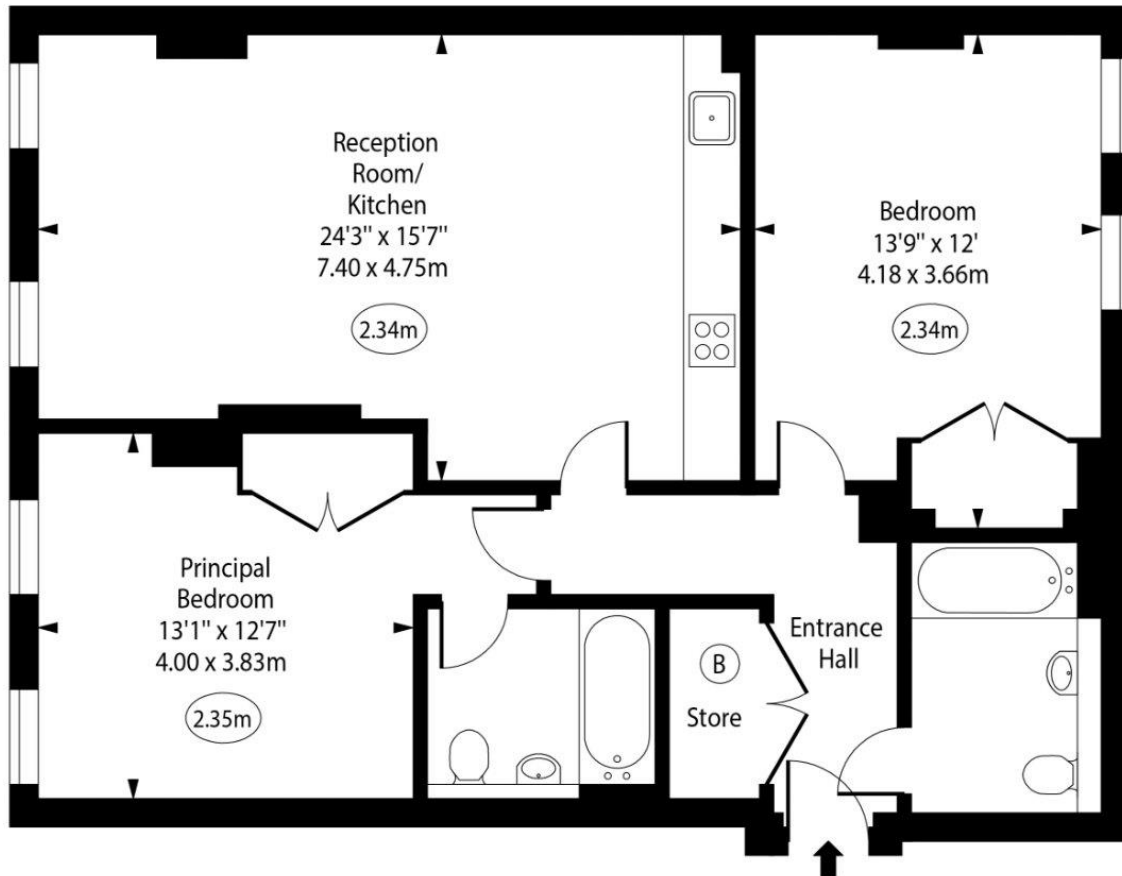
020 7267 2053

[chestertons.co.uk](https://www.chestertons.co.uk)

Kings Terrace



○ - Ceiling Height



Second Floor

Gross Internal Area - 980 Sq Ft - 91.04 Sq M

Approx Gross Internal Area 980 Sq Ft - 91.04 Sq M

Every attempt has been made to ensure the accuracy of the floor plan shown. However, all measurements, fixtures, fittings, and data shown are approximate interpretations and for illustrative purposes only. Measured according to the RICS. Not To Scale.

www.goldlens.co.uk

Ref. No. 028991J

