



pearson
ferrier®



94 PRETTYWOOD
Bury, BL9 7HX
Offers Over £210,000

94 PRETTYWOOD

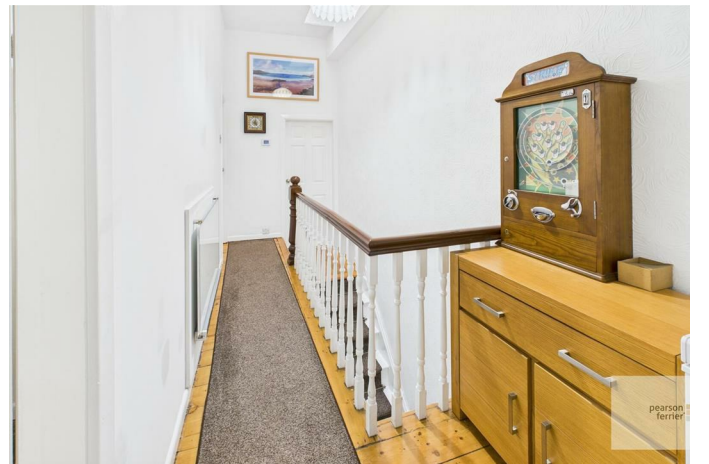
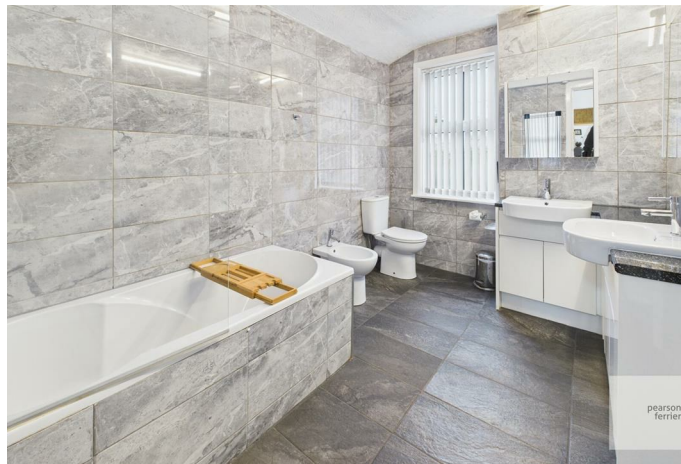
Property at a glance

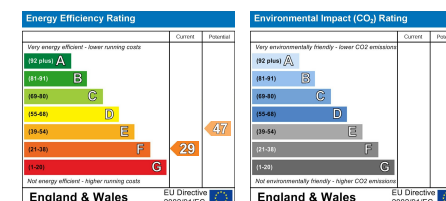
- BAY FRONTED VICTORIAN END TERRACE
- THREE BEDROOMS
- TWO RECEPTION ROOMS
- PERIOD FEATURES
- INFRARED HEATING
- IDEAL FIRST TIME BUY OR FOR GROWING FAMILIES
- EASY ACCESS TO JUNCTION 2 M66

A deceptively spacious three bedroom, two reception room Victorian FREEHOLD end terrace property. The property is located in the Heap Bridge area of Bury and is well placed for access to Bury & Heywood town centres with junction 2 M66 motorway being close by and has some great countryside walks locally. In brief the property comprises of: Vestibule, entrance hall, lounge with bay window and wood burning stove, sitting/dining room with exposed brick fire place and kitchen. To the first floor are three bedrooms and contemporary five piece bathroom with his & her hand wash basins & under floor heating. The property also benefits from infrared heating heating system and is ideal for both first time buyers or growing families alike. Viewing is essential to appreciate the internal condition and the size of the accommodation on offer.

Tenure - Freehold
Council Tax Band - B
EPC-F







Bury Office
 435/7 Walmersley Road, Bury, Lancashire, BL9 5EU
 Telephone: 0161 764 4440
 Fax: #
 Email: bury@pearsonferrier.co.uk

www.pearsonferrier.co.uk



All statements contained in these particulars are for indicative purposes only and are made without responsibility on the part of Pearson Ferrier and the vendors of this property and are not to be relied on as statements or representations of fact. Potential purchasers should satisfy themselves by inspection or otherwise as to the accuracy of such details contained in these particulars.