



Guide Price
£1,750,000

Freehold

4x  3x  2x 

Gundreda Road, East
Sussex, BN7

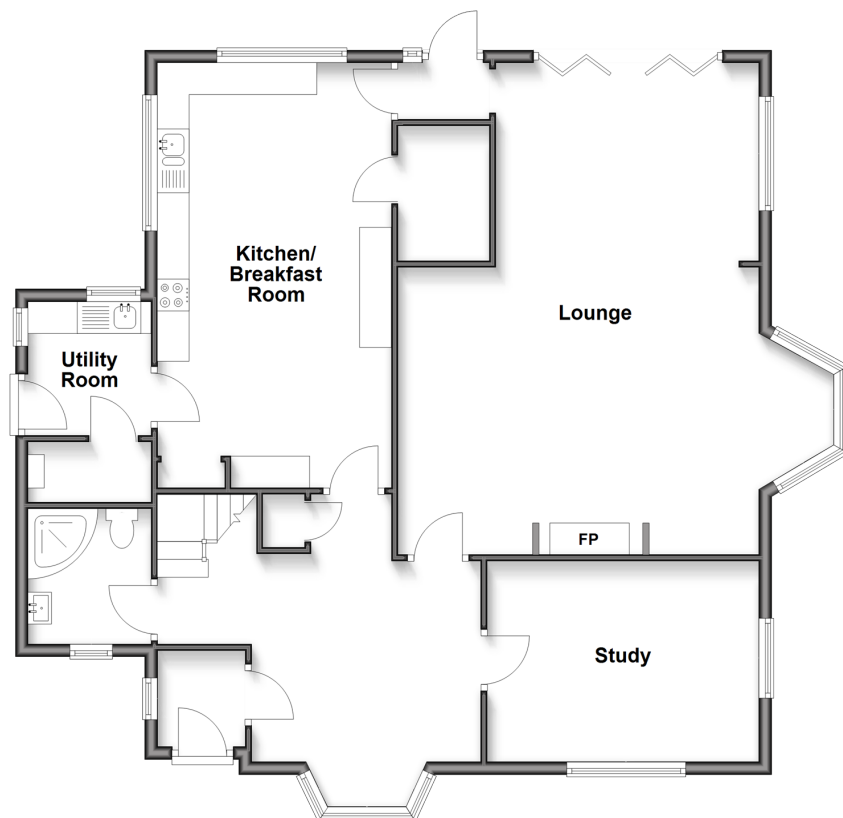
OVER 60?

Secure this property
for up to **59% less!**

cubitt&west
Helping you move forwards

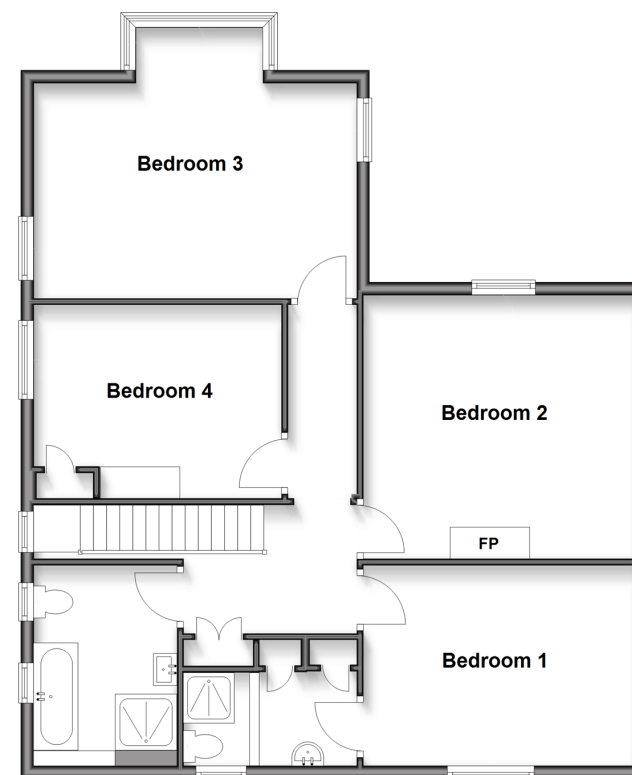
Ground Floor

Approx. 117.6 sq. metres (1266.3 sq. feet)



First Floor

Approx. 88.5 sq. metres (952.5 sq. feet)



Accommodation

GROUND FLOOR

Porch
Hallway
Shower Room
Study: 14'0 x 10'4 (4.27m x 3.15m)
Lounge: 24'7 x 20'10 L shaped (7.50m x 6.35m)
Kitchen/Breakfast Room: 22'0 x 12'2 (6.71m x 3.71m)
Utility Room

FIRST FLOOR

Landing
Bedroom 1: 14'0 x 10'4 (4.27m x 3.15m)
Ensuite Shower Room
Bedroom 2: 14'0 x 13'4 (4.27m x 4.07m)
Bedroom 3: 17'3 x 10'10 (5.26m x 3.30m)
Bedroom 4: 13'0 x 10'0 (3.97m x 3.05m)
Bathroom

OUTSIDE

Front, Side & Rear Gardens
Garage & Off-Road Parking



Main features

- Glorious, detached family home on a stunning plot. Beautiful original period features
- Potential to extend/convert or build a new dwelling (subject to planning permission)
- Outstanding entertaining space
- Arts and Crafts architecture
- Double garage with driveway
- Prime residential street in Lewes



Nearest Schools

Primary Schools: Wallands Community Primary 0.2 miles, St Pancras Catholic Primary 0.5 miles, Pells C of E Primary 0.8 miles
Secondary Schools: Lewes Old Grammar School 0.9 miles, Priory School 1.8 miles, Owlswick School 2.1 miles



Transport Information

Train Stations: Lewes 1.3 miles, Cooksbridge 2.4 miles, Plumpton 4.2 miles



Address

Gundreda Road, East Sussex, BN7



Directions

For directions to this property please contact us.



cubitt&west
Helping you move forwards

Call Lewes Branch (01273) 471231 ■ cubittandwest.co.uk



- Legal advice should be taken to verify fixtures/fittings, planning, alterations and/or lease details
- Appliances & services are untested, dimensions are approximate and floor plans are not to scale
- Through a Homewise Home For Life Plan people aged 60+ can secure this property for up to 59% less, by purchasing a Lifetime Lease



23009089/20260124/JL1/MM