



Lower Mortlake Road, TW9

£995,000

A beautifully presented Victorian family home which has been fully refurbished by the current owner. The house consists of three bedrooms, two bathrooms, has been extended into the loft and has brand new solar panels.

The location provides great access to the town centre of Richmond where a plethora of fine restaurants & eateries can be found amongst a vast array of shops and outstanding transport links. The River Thames and Richmond Park whilst also being conveniently situated beside the Royal Botanic Gardens, Kew and the Old Deer Park area.

Features

- Three Bedrooms
- Two Bathrooms
- Loft Extended With Solar Panels
- Garden Studio
- Parquet Flooring
- Modern Kitchen and Bathrooms



Lower Mortlake Road, TW9

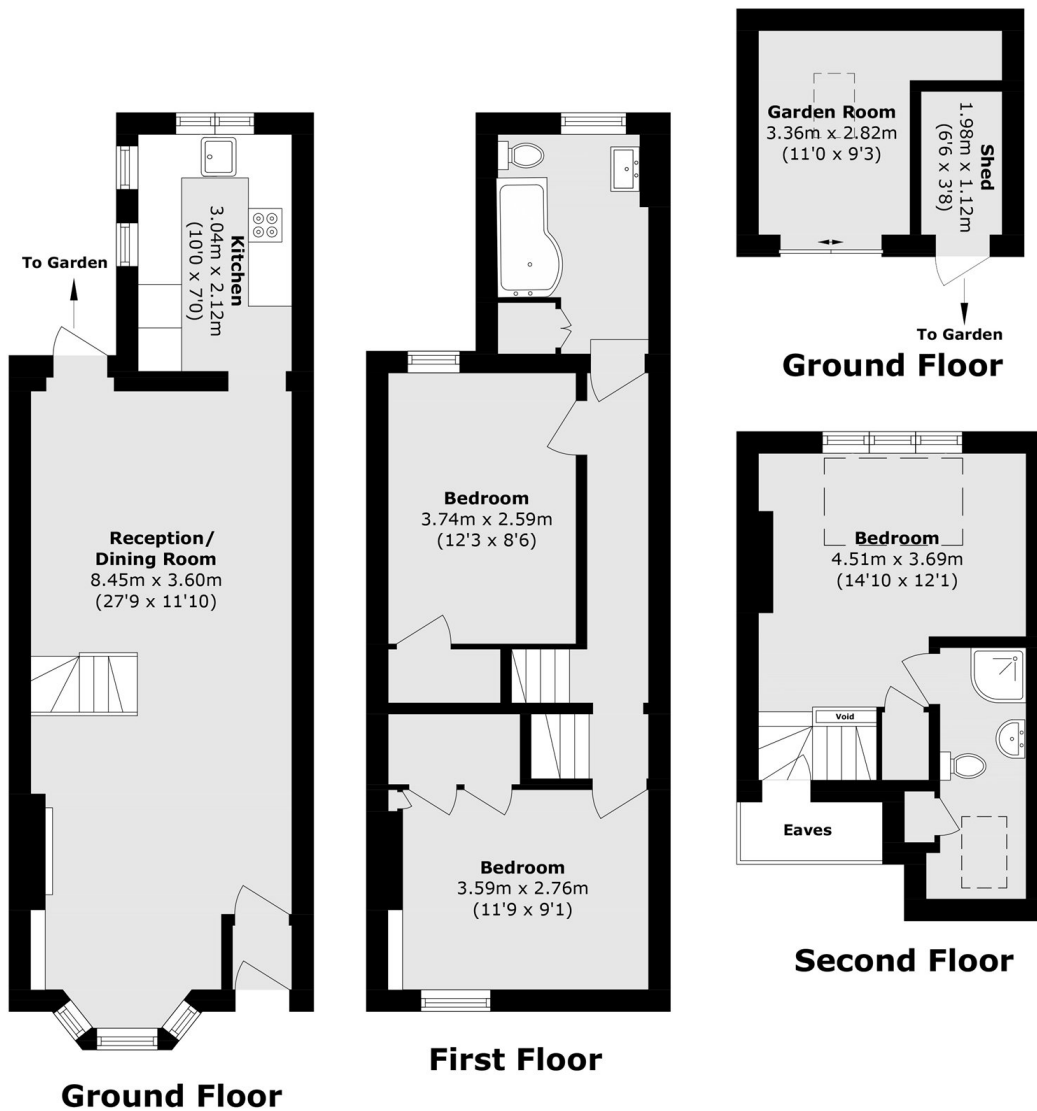
The ground floor accommodation consists of a bay fronted double reception room with a feature fireplace, designated living and dining space, access to the rear garden, and a separate modern fitted kitchen.

The first floor accommodation comprises two double bedrooms with built-in wardrobes and a modern family bathroom. The second floor comprises the master double bedroom with en-suite bathroom and eaves storage.

To the rear is a lovely garden with decked dining area, faux lawn and mature shrubs. The garden also hosts the modern garden studio, perfect for those working from home. To the front of the house is a small garden laid to patio which houses the bike storage and solar panel battery pack.



Lower Mortlake Road, Richmond, TW9



Total area (approx.): 94.8 sq. m (1020.4 sq. ft)
Outbuilding area (approx.): 9.0 sq. m (96.9 sq. ft)
(Excluding Eaves)