



Hammersmith Grove, W6

£350,000

Dexters are proud to present this one bedroom first floor flat located in a prime position on Hammersmith Grove.

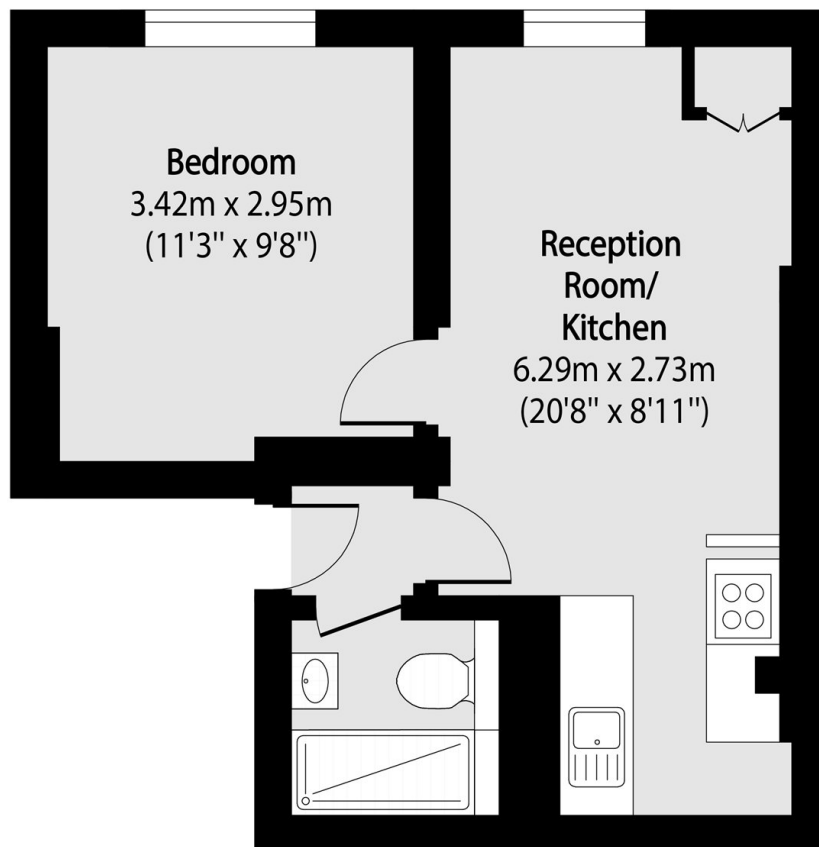
As you enter the property you are greeted with an open planned kitchen and living room area. On the right is the bathroom and just off the living room is a great size bedroom with fantastic storage space.

Hammersmith Grove is a wide tree-lined street in Brackenbury Village offering convenience of two stations in Shepherds bush and Hammersmith as well as all the amenities on offer throughout such as bars, restaurants and independent shops. There is also a range of great state and private schools.

Features

- One Bedroom
- First Floor Flat
- Chain Free
- Brackenbury Village
- Long Lease
- Natural Light

Hammersmith Grove, London, W6



Total area (approx): 32.52 sq m (350 sq. ft)