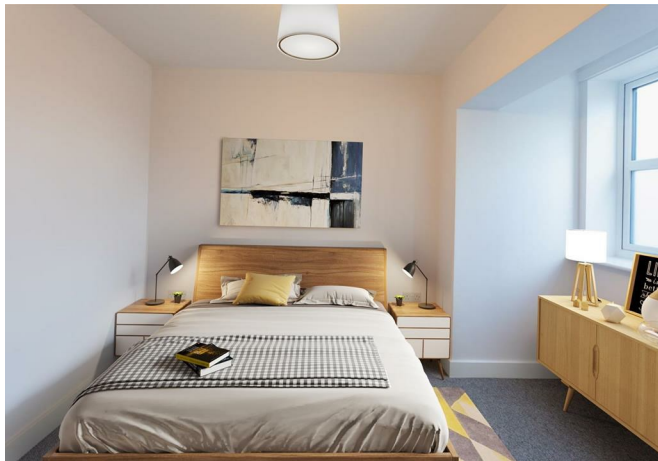




# Reigate Hill, Reigate

£1,475 Per Month





With Reigate Station on its doorstep, Reigate Hill House offers convenience for commuters as well as being within walking distance to the town centre. There is a choice of one & two bedroom apartments in this landmark building with parking allocated to selected homes.





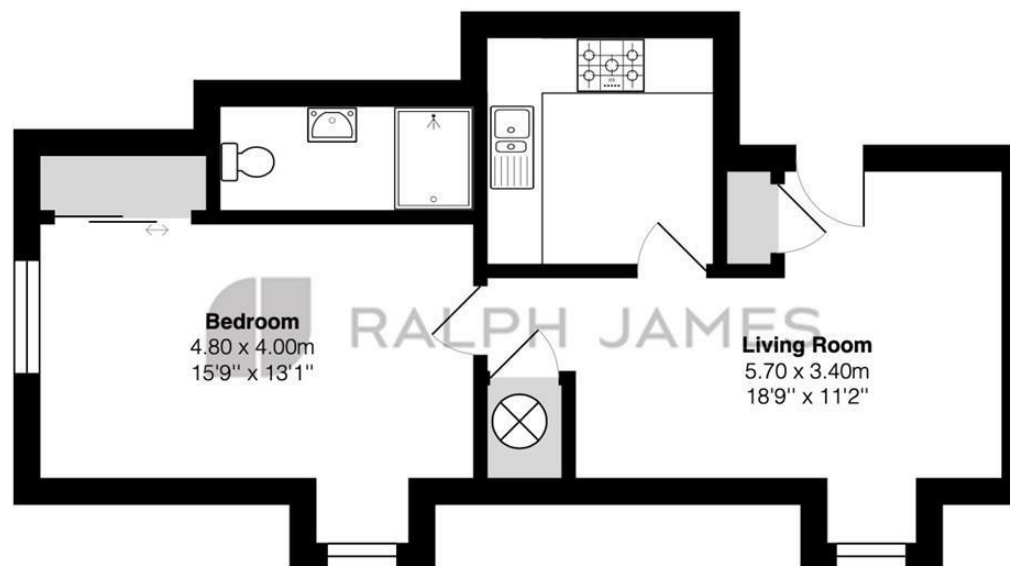
**\*\*PHOTOS AND MARKETING ARE FOR ILLUSTRATIVE PURPOSES ONLY\*\***

Ralph James is proud to present this wonderfully modern development in the heart of Reigate. Featuring a number of double bed flats with triple glazing throughout, white goods included, modern bathrooms, and varying layouts with some flats having an open-plan kitchen/living room while others have a more separate living room design. Viewings are highly recommended to view the development as a whole and to reserve your favorite flat!



## Need to know

- Large double bedroom flats
- Triple glazing throughout
- Individually allocated parking
- Open plan or separate layout options
- Modern development
- Super fast broadband
- Smart controlled heating
- Central Reigate
- Modern bathrooms
- EPC: B



### Reigate Hill House, Reigate

FOR ILLUSTRATIVE PURPOSES ONLY.

Whilst every attempt has been made to ensure the accuracy of the floor plan shown, all measurements, positioning, fixtures, features, fittings and any other data shown are an approximate interpretation for illustrative purposes only and are not to scale.

No responsibility is taken for any error, omission, miss-statement or use of data shown.

The above statement applies to both 'Still Moving London LTD' and the Company or individual displaying this floor plan.

Unauthorised reproduction prohibited.

Â© Still Moving London LTD (www.stillmoving.london)



## Interested?

reigate@ralphjames.co.uk

01737 333677

1

ralphjames.co.uk