



**15, Vicars Walk, Goldington,
Bedford MK41 9HG**





A spacious, fully refurbished three bedroom semi-detached house with a garage conveniently situated opposite St Mary's church in Goldington well served by a wide range of local amenities close by and is approximately two miles from the town centre. Offered for sale with no upward chain.

The property has recently undergone a thorough refurbishment program which includes new electrics, new radiators, air conditioning and new flooring throughout plus a newly fitted kitchen with a comprehensive range of units, a stylish, refitted 3 piece bathroom plus a separate WC. Further benefits include a large utility room, double glazing and a 36 ft x 25 ft fully enclosed rear garden with pedestrian access to the garage.

In summary, this is a ready to move in home refurbished to a high standard and nicely situated with views across green open space towards the historic St Mary's church.

Early viewing is highly recommended.

- * **3 Good Sized Bedrooms**
- * **Lounge/Diner**
- * **Refitted Kitchen/Breakfast Room**
- * **Double Glazing**
- * **Gas Radiator Heating**
- * **Refitted Bathroom**
- * **Large Utility Room**
- * **Enclosed Garden**
- * **Garage**
- * **New Air Conditioning System**

FREEHOLD

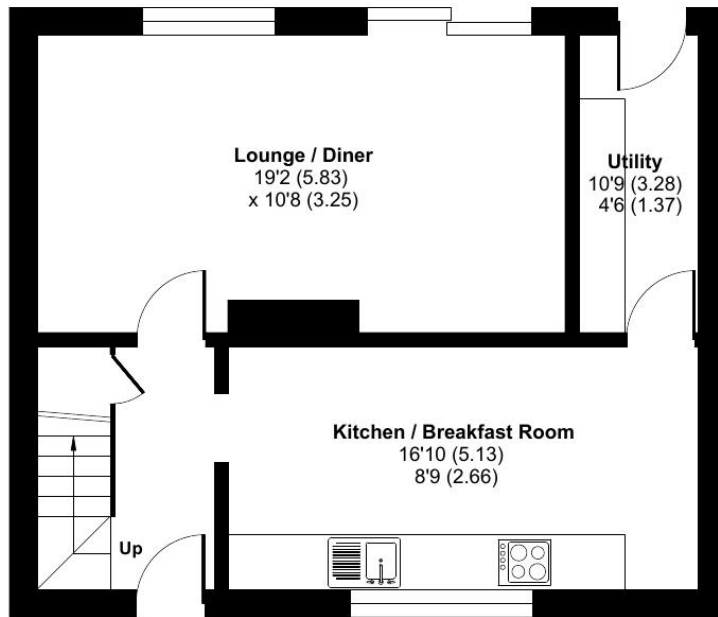


"Hassett House", Hassett Street, Bedford MK40 1HA

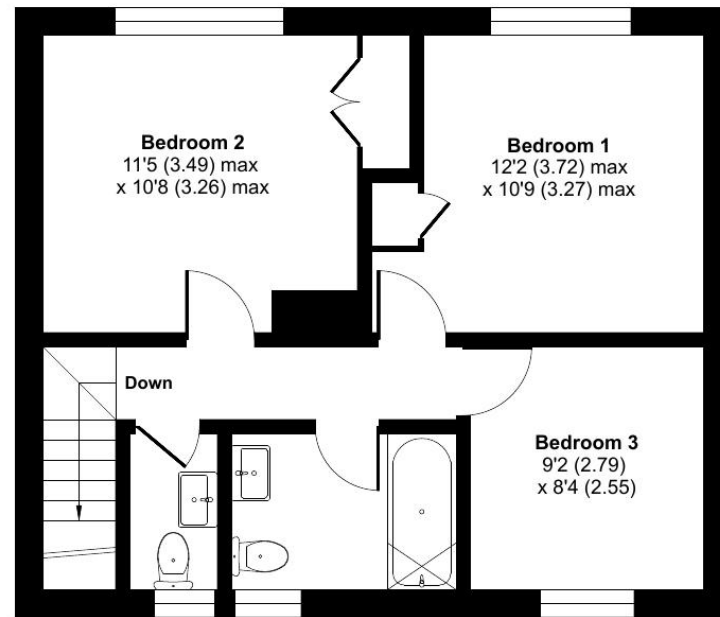
www.taylorbrightwell.co.uk property@taylorbrightwell.co.uk

01234 326444

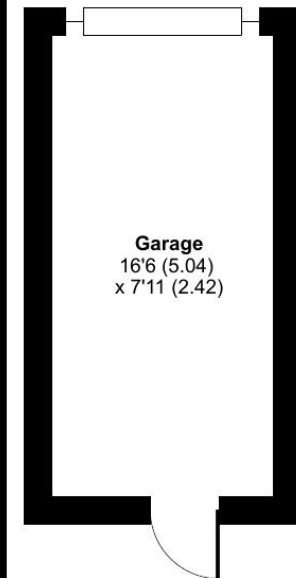
Money Laundering Regulations: Intending purchasers will be asked to produce identification documentation and we would ask for co-operation in order that there is no delay in agreeing a sale. Agents Notes: The agent has not tested any apparatus, equipment, fixtures & fittings or services and so cannot verify that they are in working order or fit for the purpose. A buyer is advised to obtain verification from their solicitor or surveyor. All photographs shown are for illustration purposes only and may depict items that are not for sale or included in the sale of the property. Please note that we have not checked the situation with regards to planning consents, building regulation consents and any other relevant consents relating to this property and therefore, any interested purchaser should carry out their own enquiries with the appropriate authorities. All measurements are approximate and for guidance only. The particulars do not form part of any contract and all properties are offered subject to contract. Neither Taylor Brightwell nor any of its employees or agents has any authority to make or give any representation or warranty whatsoever in relation to this property.



GROUND FLOOR



FIRST FLOOR



Approximate Area = 942 sq ft / 87.5 sq m

Garage = 131 sq ft / 12.1 sq m

Total = 1073 sq ft / 99.6 sq m

For identification only - Not to scale



Floor plan produced in accordance with RICS Property Measurement 2nd Edition, Incorporating International Property Measurement Standards (IPMS2 Residential). © nichecom 2026. Produced for Taylor Brightwell. REF: 1440124